



# Mastering the needs of **Public & Office** lighting

 **LUMIPARTS**  
Mastering the needs of lighting

## PERSONAL APPROACH

*"We passionately enlighten our business partners by providing flexible and personalized lighting solutions while expanding nationally and internationally through healthy and sustainable relationships."*

At Lumiparts, we believe in global passion for people, entrepreneurship and adventure. We encourage ourselves and others to develop further, because driven passion never stands still. Lumiparts helps illuminate the passion of entrepreneurs and end users by uniquely providing complete lighting solutions. With a personal approach, we customize products and keep them in stock. Together we master the needs of lighting!

We have specialized in supplying and creating flexible lighting solutions that can be tailored to each specific customer and project need. We are in close contact with our customers and offer standard lighting products as well as customized White Label and OEM luminaires. We understand that every project is unique and that personalization is the key to every lighting project! At service level we therefore offer an in-house assembly department where all wishes are welcome, various market-oriented leaflets, demo boxes and of course a listening ear. This is how we offer the best advice and together make our products, partners and end customers shine.

## ASSEMBLY, OEM & WHITE LABEL

Our luminaires can be fully assembled as required. We do this in our own assembly department in Nieuwkoop, located directly next to our office building. Here, our expert assembly team carries out all specific customer needs. These include fitting a different driver, using a specific LED or other colour combinations of the luminaire. OEM and White label wishes are also realised here. Sawing tables for working with millimetre precision, all tools and components come into their own here.

We also offer the possibility to rebrand our products to make them your own (house) brand. When assembled, our passionate team ensures that our products are branded with your own brand label. This is achieved through the White Label & OEM concept. Choose your fixtures, send us your company information, logo and desired product numbers and we will get to work for you!

*"To illuminate our world by inspiring our employees, customers and suppliers with our passion for lighting. Together, we'll be the masters of lighting."*



# Since 1985

## **FLEXIBLE SOLUTIONS**

We strive to surpass your expectations and remain adaptable. Our procurement policy guarantees a diverse selection of parts is consistently in stock, enabling the assembly and direct delivery of many fixtures. Moreover, our meticulous part selection ensures interchangeability, facilitating tailored solutions for your project. Need an additional reflector, ring, or driver? No issue! Situated in Nieuwkoop, our expansive warehouse and office ensure proximity and distinguish us as providers of customizable lighting solutions.

## **ACCURATE LIGHT MEASUREMENTS**

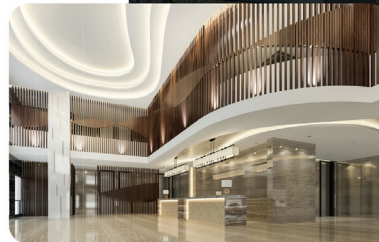
Having been operational since 1985, we have accumulated extensive expertise in the industry. Our approach is rooted in knowledge and skill at both product and service levels. Tailoring our efforts to meet the requirements of each segment, we maintain our lighting laboratory to conduct precise measurements of our luminaires. This enables us to furnish precise details and generate comprehensive EPREL reports, which are accessible to all partners. Additionally, this facilitates the provision of LDT files for our luminaires. Embracing new challenges, we eagerly engage in knowledge exchange on a global scale.

# Enhancing Efficiency, Well-being, and Comfort.

In a world where efficiency, well-being, and comfort are becoming increasingly important, lighting plays a crucial role in our daily environment. Whether it's in offices, public spaces, government buildings, hospitals, or residential buildings, the right lighting can significantly impact both productivity and people's well-being.

We illuminate with modern lighting solutions that contribute to energy efficiency, the creation of a healthy and comfortable living and working environment, and the promotion of sustainability.

By investing in innovative lighting solutions, companies and institutions can not only reduce their ecological footprint but also positively influence the satisfaction and well-being of their employees, residents, and visitors. Our vision for the future of lighting emphasizes the importance of smart technologies, such as LED lighting, dynamic light control, and human-centric lighting, designed to meet the changing needs of our society.





Sluishuis Amsterdam - XLH



## PRODUCT IMPACT AND

# Sustainability

With our light lab, we strive for excellence in sustainability, efficiency, quality, and uniformity.

- Our product innovation aims to reduce environmental impact.
- Our products are made in a fair environment and mostly from recycled materials. We support relamping programs.
- A tool for calculating carbon footprints
- Complies with energy codes & global standards for sustainable building.
- Collaborating with social projects promotes equality and inclusivity worldwide.



We prioritize **sustainability and customer needs** in innovating our products. Our efforts to achieve this involve our **lighting lab, an improved reflector** for **optimal lumen efficiency**, and **minimizing raw material and energy consumption**.



We employ an **equitable production process**, considering both **the lifespan and origin of materials**. Our products are crafted from **recycled materials** and designed to be **recyclable**.



Fostering **social impact** through **partnerships with social initiatives** and **ethical suppliers**, providing chances for individuals with disabilities in the workforce, and **promoting social sustainability and inclusivity**.



Find out all the benefits of Casambi on our website



## Official certified commissioning partner of Casambi

Casambi plays a crucial role in greening the world by enabling intelligent, energy-efficient lighting systems. By embracing Casambi's technology, businesses and households can reduce their energy consumption by controlling lighting on demand, preventing energy waste. This leads to lower energy bills and a reduced carbon footprint.

Lumiparts is a certified partner of Casambi, and that means we can help you with any questions about Casambi. For example, we can preset Casambi luminaires, resulting in immediate operational readiness and a reduction in costly installation time. In addition, we offer personalized innovations and you can count on professional support and guidance, so that all the benefits of Casambi are maximized on your project.


**CASAMBI**









Group control



Scene control




Colour temperature



Light Sensors




Light output



GPS control



Time & calendar control



Light visuals



Animations



PIR/Motion Sensors



Cloud Solution



Easily Expandable



Cloud Synchronisation

# See, Function and Feel better.

## Human centric lighting modules

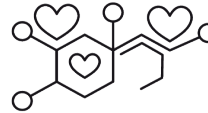


### IMPROVE HEALTH WITH BIOUP OR TUNABLE WHITE LIGHTING

Human health is crucial; energy levels and well-being are influenced by daylight and sleep. With advanced fixtures such as Bio Up and Tunable White, we mimic daylight in business environments for a healthier work environment. Light affects not only what we see but also how we feel and function. These customizable modules maximize the positive impact on our daily lives and are excellent for use, for example, within workspaces, offices, healthcare facilities, educational institutions and public spaces.

The Tunable White and Bioup modules adjust the color temperature and brightness of light throughout the day to support our biological rhythms, which improves our both mental and physical health and productivity. In addition, the BioUp lighting module stimulates the production of our happiness hormone.

At the same time, like the HE+ COBs, these lighting modules are designed to be energy efficient, reducing energy costs and reducing greenhouse gas emissions and air pollution. This contributes to better societal health and reduces ecological footprint.



## The bright lights of human centric light

- Supports human health and well-being.
- Makes you more vital and relieves discomfort.
- Supports daily functions, cognitive performance and alertness.
- Provides better sleep.
- Keeps your biological clock balanced.
- Makes you less sensitive to disruption.
- Helps your body to be in tune with its natural 24-hour rhythm.
- Preventive against nearsightedness.
- Compatible with SMART lighting, such as Casambi.



### **Prioritize health**

Create a safe and healthy work environment and encourage employee health by improving visibility and applying biodynamic lighting.



### **Time-related**

The dynamic feature lets you automatically mimic daylight patterns by adjusting color temperature and brightness levels based on the time of day for optimal visual comfort.



### **Scene Setting**

A combination of preset settings instantly sets the mood in the room that supports the next planned task or spontaneous activity



### **Personal control**

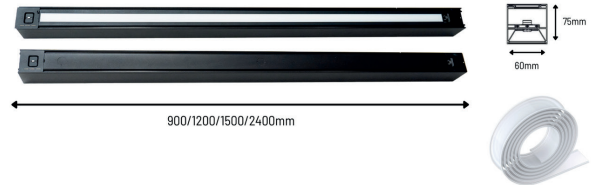
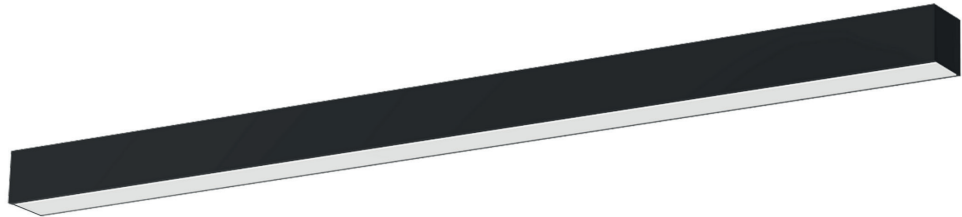
Get more flexibility and easily change LED lighting intensity and corresponding color temperature (CCT) from warm white (2700K) to cool white (6500K).

# LUCIO

## PENDANT OR SURFACE

Lucio provides an enhanced lighting experience through its unique dip switch technology. Featuring several output settings and 3 color temperatures (3000K, 3500K, 4000K), it allows for effortless customization of the ambiance, ensuring optimal lighting intensity proportional to the fixture's length. Seamless integration is achievable by connecting multiple Lucio fixtures using designated connection pieces, while the addition of a 15-meter opal finishing roll enhances the overall aesthetic of the design.

The Lucio fixture comes standard with an included blind plate. Easily switch this out with the uplight option with just one click. The uplight offers indirect lighting at the top of the fixture and is also offered in black for all sizes. The uplight variant distributes the light output of the Lucio, with 70% directed downwards and 30% upwards. The uplight matches the color of the direct light. This fixture boasts an energy efficiency of up to 121lm/W, leading to savings on energy usage and expenses.



### ENJOY LUCIO'S COMPANY.

- ✓ The choice to utilize an uplight
- ✓ Dali 2 standard dimmable and compatible with Casambi.
- ✓ Light color and output dip switch
- ✓ Available in four varying lengths.
- ✓ Available with a convenient 15m diffuser roll to complete your design.



 Delight Online

0



 Delight Online

# XLH



# & XLH UP/DOWN

## DIRECT / INDIRECT LIGHT

### MODERN AND DIVERS

The XLH and XLH up-down luminaires are remarkably versatile solutions ideal for office and utility environments. Their standardized but customizable design allows you to seamlessly adapt them to a wide range of requirements in these sectors. The entire luminaire is assembled from various components in our assembly department.

This highly modern design is often chosen for use in office spaces and other utility projects. The XLH can be used as a suspended, track or surface-mounted luminaire and is available in sizes of 0.9 m, 1.2 m and 1.5 m. The XLH and XLH up-down have a specialized linear LED module, which allows you to achieve a CRI of 90 in light colors such as 3000K, 3500K and 4000K. For both fixtures, it is possible to equip them with Casambi to increase comfort and control. Moreover, you can equip the LED module with Tunable White and Bioup modules to provide quality people-oriented lighting for offices. This lighting follows the biodynamic rhythm and, in combination with Bioup, can even stimulate the production of the happiness hormone. Ideal for workplaces, but also for people.

For the XLH and XLH up-down models, you can choose between a standard opal finish or a micro-prismatic cover. If you decide to equip the XLH or XLH up-down with Casambi, you can also integrate external sensors to improve safety and efficiency, especially in common areas within offices and utility buildings.



### XLH



Direct 1-light

Length 0.9, 1.2, 1.5 m

Color white black aluminum

LED 1ft 3000K 3500K 4000K Bio-Up TW Bio-Up 4200K

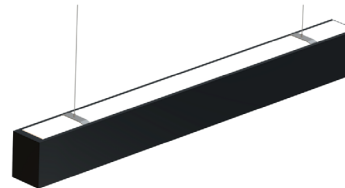
LED 2ft 3000K 3500K 4000K Bio-Up TW Bio-Up 4200K

Driver 35W on/off 60W on/off 35W DALI 60W DALI 36W DALI flextone 75W DALI flextone 35W Casambi 60W Casambi

Cover microprismatic opal

Cable (1 and 2 meter) white black transparent transparent DALI

End-Cap white black aluminum



### XLH Up/Down



2-light direct and indirect

Length 0.9, 1.2, 1.5 m

Color white black aluminum

LED 1ft 3000K 3500K 4000K Bio-Up TW Bio-Up 4200K

LED 2ft 3000K 3500K 4000K Bio-Up TW Bio-Up 4200K

Driver 35W on/off 60W on/off 35W DALI 60W DALI 36W DALI flextone 75W DALI flextone 35W Casambi 60W Casambi

Cover microprismatic opal

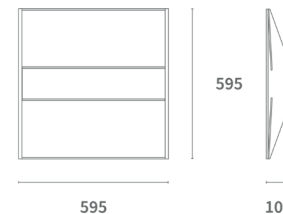
Cable (1 and 2 meter) white black transparent transparent DALI

End-Cap white black aluminum



 Delight Online





# SUAVE V2 PANEL



## FUNCTIONAL, WITH HIGH END COMFORT

The Suave LED panel is designed with comfort in mind. It minimizes glare, allowing employees and visitors to work and relax in a serene environment. In addition, colors are rendered naturally, making the space more pleasant, and flickering of light is also minimal. That means employees can work in an optimal environment. Want to make this fixture even more people-oriented? For added functionality, the Suave can be equipped with Bio Up Melanopic Lighting technology. This innovative feature stimulates the happiness hormone and follows the rhythm of the day, creating a dynamic and invigorating lighting experience.

With a system efficiency of up to 117lm/W, this fixture provides excellent brightness while optimizing energy consumption. Resulting in lower energy costs and the reduction of your carbon footprint. To provide rooms with even more convenience, both fixtures allow you to apply Casambi. This way you enjoy extra comfort and control, easily adjust the lighting and can use motion sensors through Casambi's smart functions.

## Suave V2

LED panel

UGR <19 @ max. 1050mA

Size 595\*595mm

System Power 33W, 38W, 45W

CRI >80Ra

CCT 3000K 4000K

System Lumen 3505lm-5004lm

System Efficacy 106lm/W-117lm/W

LOR Up to 80%

Cover PMMA Opal Diffuser

L+B values (50.000 hr) L80B10 (50.000h)



 Delight Online

# CECID



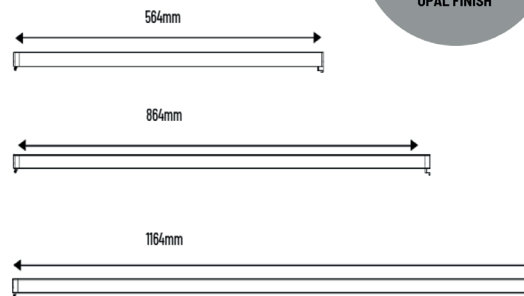
## LINEAR TRACKLIGHT

The Cecid, a linear tracklight with a switchable dip switch, combined with the louvre, is perfect for office and public settings. This modern design allows for easy adaptation to your lighting requirements using the dip switch.

The Cecid is recognized for its aesthetic appeal and versatility. This fixture features an inconspicuous in-track driver and dip switch to enhance creativity. This allows for convenient control of light color temperature and output on-site, with the Cecid offering 3 varying lengths for experimenting with lighting design.

The Cecid includes an opal finish by default, with the option to choose a reflector finish for added comfort. Adjusting the dip switch to 3000K, 3500K, or 4000K allows for seamless transitions between various atmospheres. Additionally, you have the ability to regulate the light output to customize the brightness level.

The Cecid, with its unique design and concealed in-track driver, guarantees a sleek appearance and provides effortless incorporation into various retail settings. Boasting a remarkable efficiency of up to 121lm/W, this fixture reduces expenses and energy consumption, consequently leading to lower CO2 emissions.



### DELIGHT WITH CECID

- ✓ Invisible in-track driver for sleek design (sold separately)
- ✓ Dimmable Dali driver available
- ✓ Dipswitch for adjusting light colors and brightness.
- ✓ Available in three varying lengths.
- ✓ Reduces energy expenses.

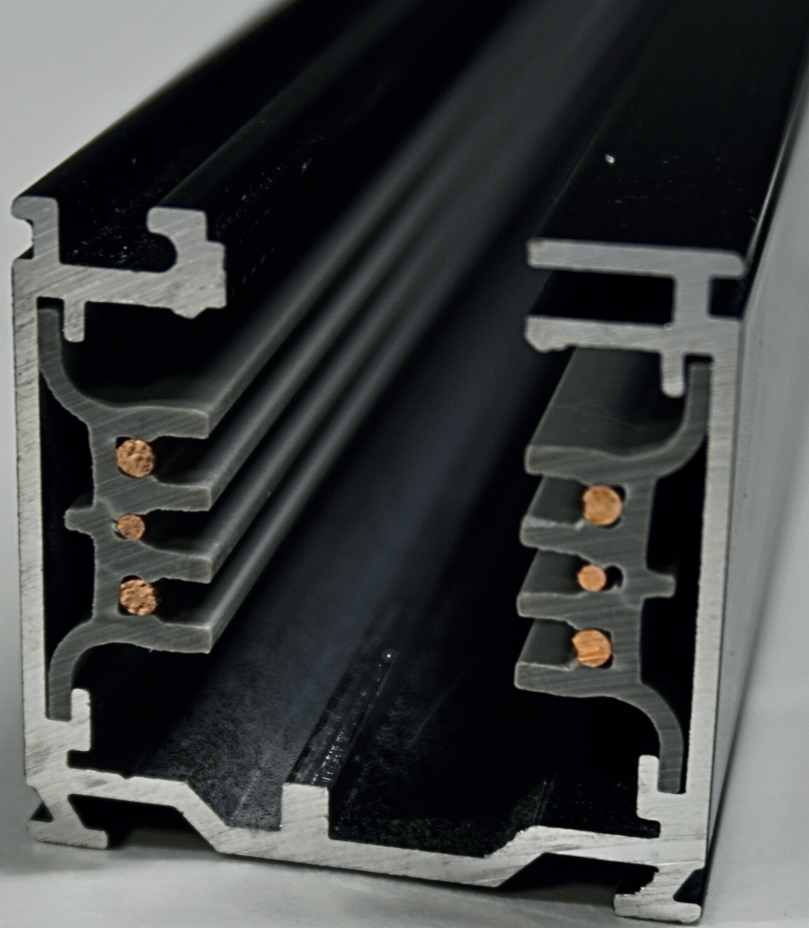


# IVELA 3 PHASE DALI TRACK

The Ivela 3-phase DALI track transmits signals to the luminaires for operation. DALI rail systems are excellent for addressing luminaires individually. Incorporate a Casambi gateway to oversee both Casambi and DALI concurrently within a unified network. This setup is ideal for projects requiring precise lighting control.

We offer our Lumiparts aluminium suspension kit, designed for mounting the 3-phase DALI track. This kit features a user-friendly pendulum structure that simplifies installation and adjustment, allowing you to work close to the track without needing to modify the wire at the top. Additionally, the pendant kit's plate can be used to reinforce your track design.

- Design freedom
- Adjustable pendant sets for easy customization.
- Dali managed
- Connectors for design consistency
- Thanks to enhancements in our production process and increased output, we are able to provide the DALI 3-phase rail at a more competitive price and with improved delivery times.





 Delight Online

# BAZA DOWNLIGHT



Baza offers a broad range of sizes—110 mm, 140 mm, 165 mm, 190 mm, and 230 mm—ensuring a perfect fit for any space. The convenient cover rings allow easy adaptation to existing cut sizes, saving you time and money on installation. The 3000K and 4000K light colors provide a bright and daylight ambiance.

Experience Baza's efficiency of up to 125 lumens per watt, allowing you to enjoy maximum brightness and performance while saving on energy bills. Additionally, the Baza offers a UGR value of less than 19, ensuring comfortable and glare-free lighting.

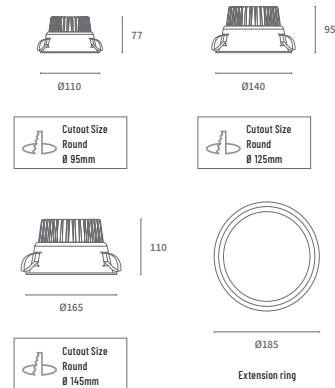
Take advantage of advanced control options such as DALI or Smart Lighting, giving you complete control over your project's lighting. Easily adjust the desired color temperature with the Tunable White function, ranging from warm to cool white light, and create the perfect atmosphere for any occasion that requires concentration. You can also integrate the BioUp module into the Baza for an enhanced lighting experience that stimulates the production of the happiness hormone.

Safety is a top priority; that's why the Baza also offers the option of being equipped with emergency lighting. This ensures that your project remains well-lit even in emergencies, meeting the strictest safety regulations.



- ✔ Available in 5 different sizes
- ✔ High reflector for low glare and optimal comfort
- ✔ High lumen/watt ratio up to 125lm/w
- ✔ Can be equipped with Dali or Casambi control, Bioup or Tunable white
- ✔ Made and customizable with durable materials
- ✔ Optional addition of emergency lighting and available with cover ring

**L90B10 (50.000h)**





 Delight Online



# PLATA

## DIPSWITCH PANEL



### MICROPRISMATIC DIFFUSER

With a UGR value of less than <math><18</math>, this backlit panel is a true addition to office and Energy Label-C projects. The Plata offers much better light distribution and comfort through its shielding compared to other comparable led panels.

### ENERGIE EFFICIENT TOT 131 LM/W



### DIPSWITCH

A special Dip switch for 3 different light colors including 3000K, 3500K and 4000K. The power can be controlled on the driver and can be set to different wattages ranging from 22W (2705lm) up to 38W (4566lm) at 3500K.



### COLOURS



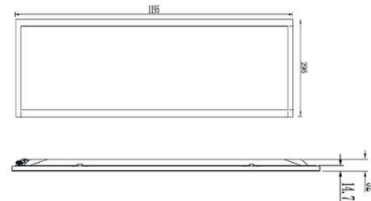
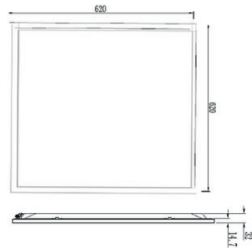
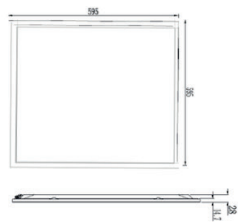
### FREEDOM IN MOUNTING

With the option to use the Plata as a pendant, inlay or surface-mounted fixture using the surface-mounted frame, this fixture is even suitable for concrete ceilings.

- ✓ The Plata is dimmable on/off as standard
- ✓ Optionally available DALI 2 (better compatible, more addresses, backwards compatible with DALI)
- ✓ Easily add to Casambi networks via broadcasting

### Accessories

The Plata in combination with the construction frame makes it possible to facilitate renovation projects smooth and quickly. This solution is also ideal for use with concrete ceilings, allowing you to easily provide quality lighting.



Suspension set for Plata

Construction frame for Plata

# OCLA<sup>IP44</sup> DOWNLIGHT



Schools, public spaces and sports centers are easily illuminated with the Ocla! This powerhouse offers an impressive light output of up to 134 lm/w and combines top performance, functionality and durability in one.

Thanks to its low reflector and unique heat sink, the Ocla is ideal for rooms with high but narrow ceilings, such as schools.

The Ocla lends itself particularly well to Human Centric Lighting and can therefore be fitted with a Tunable White or BioUp module to adjust the color temperature as the day progresses, thus mimicking the rhythm of the day. In addition to biodynamic light, the BioUp technology also enhances cyan light, stimulating the production of the happiness hormone.

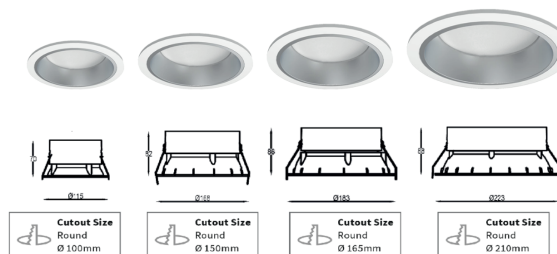
The Ocla offers four different sizes (115mm, 168mm, 183mm and 223mm) and a wide range of wattages. Whether you have a small office or a large public space, there is an Ocla to fit your project needs. The Ocla has a UGR of <24 and a CRI>80Ra, has a special heat sink and IP rating IP44 with modern design.

## OCLA DOES THE WORK

The functional Ocla has an included matte 90 degree reflector but can also be personalized with a glossy 90 degree reflector. The Ocla is available with a light color of 3000K or 4000K.

- ✔ Available in 4 different sizes
- ✔ Low reflector for higher mounting and light output
- ✔ High lumen/watt ratio rising to 134lm/w
- ✔ Compatible with Dali or Casambi controls
- ✔ Fast delivery and flexible application
- ✔ Available with BioUp and Tunable White

L80B10 (50.000h)







ireos

Beveria



Delight Online

# PINTA IN-TRACK TRACKLIGHT

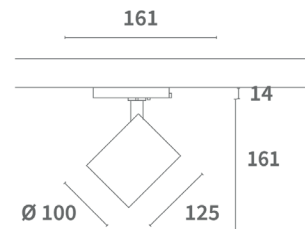


The Pinta in-track features a compact size, ideal for limited-space applications. This size is achieved through an efficient heatsink and in-track driver, maintaining performance while reducing dimensions. The Pinta in-track is a versatile, efficient, and cost-effective tracklight offering flexible options, high lumen output, compact design, and affordability. It is a superb option for individuals seeking a dependable and top-notch lighting solution for diverse applications.

With an output range of up to 5000 lumens, the Pinta in-track light is ideal for spacious areas with elevated track installations. Featuring the latest HE chip and HE reflector, this spotlight delivers up to 148 lumens per watt, leading to reduced energy usage and enhanced sustainability.

## HIGHLIGHTS OF PINTA

- ✓ Compact design suitable for any setting.
- ✓ Reflector and module for reduced energy consumption.
- ✓ Dali & Casambi dimming
- ✓ Stylish and enduring design for extended longevity.
- ✓ Available in various colors, with different CRIs and spectrums.



## ADDITIONAL OPTIONS FOR PINTA

- 15°, 24°, 36° or 60° reflector.
- 14.5W, 20W, 27W or 37W.
- CCT 3000K, 3000K PW or 4000K PW
- Housing available in black, white, or gray.
- Food, Fashion, or Art Modules



 Delight Online



**STANDARD DALI DIMMABLE**



**DIPSWITCH**

A special Dip switch for 3 different light colors including 3000K, 3500K and 4000K. The power can be controlled on the driver and can therefore be set to 50%, 75% or 100% light output.

**Ozola**

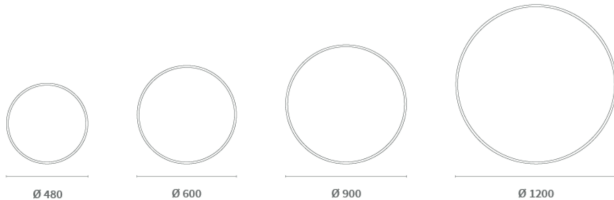
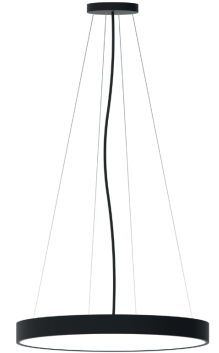
Size: 480mm / 600mm / 900mm / 1200mm  
Switchable dipswitch: 3000K / 3500K / 4000K  
Adjustable light output: 100% / 75% / 50%  
System Power: 40W, 57W, 92W, 150W  
CRI >80Ra  
System Lumen 3330lm-14630lm  
System Efficacy 83lm/W - 99lm/W  
Pendant set not included, but available in black and white

**COLOURS**



**FREEDOM IN MOUNTING**

With the option to use the Ozola as a wall, pendant or surface-mounted fixture, this fixture provides a lot of freedom in creativity.



# OZOLA DIPSWITCH

The versatile and contemporary Ozola offers no fewer than 3 mounting options. Thanks to its slim height of 8 cm, the design of the Ozola fits perfectly into any environment. In addition, this fixture makes it possible to create a modern and playful atmosphere in various rooms

The Ozola is available in four different sizes: 480 mm, 600 mm, 900 mm and 1200 mm. The pendant version makes it possible to lower high ceilings, making the environment immediately feel warmer.



Delight Online

# SMOOTH V2

## SPOTLIGHT




**Smooth V2**   
 Spotlight Round tiltable  
 System Power 7.6W  
 CRI >90Ra  
 CCT 2700K 3000K  
 System Lumen 542lm 603lm  
 System Efficacy 71lm/W 79lm/W  
 LOR >70% Driver  
 Non-Dimmable or Dimmable Driver (Included)  
 L80B10 (50,000h)



**Smooth V2**   
 Spotlight Round turn/tiltable  
 System Power 7.6W  
 CRI >90Ra  
 CCT 2700K 3000K  
 System Lumen 542lm 603lm  
 System Efficacy 71lm/W 79lm/W  
 LOR >70%  
 Driver 350mA Non-Dimmable or Dimmable Driver (Included)  
 L80B10 (50,000h)



**Smooth**   
 Spotlight Round tiltable  
 System Power 16W  
 CRI >90Ra  
 CCT 2700K 3000K  
 System Lumen 791lm 850lm  
 System Efficacy 49lm/W 53lm/W  
 LOR >82%  
 Driver 350mA Non-Dimmable or Dimmable Driver (Included)  
 L80B10 (50,000h)



**Smooth V2**   
 Spotlight square turn/tiltable  
 System Power 7.6W  
 CRI >90Ra  
 CCT 2700K 3000K  
 System Lumen 542lm 603lm  
 System Efficacy 71lm/W 79lm/W  
 LOR >70%  
 Driver Non-Dimmable or Dimmable Driver (Included)  
 L80B10 (50,000h)





 Delight Online

# GALEX II SPOTLIGHT



## Galex II 1 light

Ceiling mounted tilttable 1-light  
System Power 7.6W  
CRI >90Ra  
CCT 2700K 3000K  
System Lumen 403lm 414lm 452lm  
System Efficacy 53lm/W 54lm/W 58lm/W  
LDR >90%  
Driver Dimmable 230V LED\*  
Dimmable with Leading / Trailing Edge Dimmer  
L80B10 (50.000h)



## Galex II 2 light

Ceiling mounted tilttable 2-light  
System Power 2 x 7.6W  
CRI >90Ra  
CCT 2700K 3000K  
System Lumen 2 x 402lm 2 x 414lm 2 x 452lm  
System Efficacy 53lm/W 54lm/W 58lm/W  
LDR >90% Driver Dimmable 230V LED\*  
Dimmable with Leading / Trailing Edge Dimmer  
L80B10 (50.000h)



## Galex II 3-phase

3-phase tracklight  
System Power 7.6W  
CRI >90Ra  
CCT 2700K 3000K  
System Lumen 403lm 414lm  
System Efficacy 53lm/W 54lm/W  
LDR >90%  
Driver Dimmable Driver (included)  
L80B10 (50.000h)



## Galex II 1 phase

1-phase tracklight  
System Power 7.6W  
CRI >90Ra  
CCT 2700K 3000K  
System Lumen 489lm 504lm  
System Efficacy 64lm/W 66lm/W  
LDR >90%  
Driver Dimmable 230V LED  
Dimmable with Leading / Trailing edge dimmer  
L80B10 (50.000h)



# STRINGLINE

## LIGHTLINE

Are you looking for an energy-efficient linear solution for corridors, logistics areas, or do you want to accentuate alongside general lighting? Then the stringline is the ideal solution. This powerhouse makes it possible to illuminate spaces, making them smarter and safer. For example, the stringline can be equipped with emergency lighting and can be smartly controlled via DALI or Casambi. With smart sensors, you can determine how much light is needed, where and when it should be turned on.

The stringline is also an excellent replacement for TL or LED tubes. It provides good light distribution, high output, and high-quality lighting, with minimal energy consumption. The stringline has a system output up to 154lm/W.

The stringline offers a total solution because you can choose from various trunking systems, connectors, end caps, mounting options, sizes, light beams, and blank plates. The stringline has a 500mm connector and an IP rating of 20 and is ideal for use in utility buildings, warehouses, and logistics spaces.



Chain



Cable



Caddy Clip



Mounting clip

### Stringline

Linear light line  
 Length 1000mm, 1500mm  
 System Power 30W,50W  
 CRI>80  
 CCT 4000K  
 System Lumen 4555lm 7592lm  
 System Efficacy 152lm/W 152lm/W  
 Driver Non-Dimmable Driver (included)  
 L80B10 (50,000h)

### Stringline with compatible Stio spot

Linear light line wit Insert tracklight

<p><i>Stringline</i>          Length 1000mm, 1500mm          System Power 30W,50W          CRI CRI&gt;80          CCT 4000K          System Lumen 4555lm 7592lm          System Efficacy 152lm/W 152lm/W          Driver Non-Dimmable Driver (included)          L80B10 (50,000h)</p>	<p><i>Stio Trackspot</i>          CRI&gt;80          CCT 3000K PW, 4000K PW          LOR &gt;85          UGR &lt;20          L90B10 (50,000h)          System power 18.5W 22.5W 18.5W 22.5W          System Lumen 2723lm 3241lm 2889lm 3401lm          System Efficacy 148lm/W 144lm/W 158lm/W 152lm/W          Driver 500mA 600mA 500mA 600mA</p>
---	--

## DELIGHTING LOGISTIC FACILITIES

Storage and inventory management center on organization and precision, with good lighting being a fundamental component. Adequate illumination is crucial as it allows employees to clearly see products and goods, facilitating easy access to stored items. This not only enhances task performance in terms of speed and accuracy but also contributes to improved efficiency and cost reduction.

Lighting facilities within logistics play a significant role in ensuring employee safety. A well-lit workplace minimizes the risk of accidents and injuries, aids in the creation of more logical and organized walkways, and boosts productivity. To further enhance the process and make it more eco-friendly, consider incorporating smart motion sensors for efficient light control.





 Delight Online

# SINTRA TRACKLIGHT

The streamlined design of the Sintra tracklight is achieved through the incorporation of an integrated driver that seamlessly fits within its housing. This feature enhances its appearance within our 3-phase rail system. The fixture is equipped with a dimmable driver and a 33-degree reflector as standard and is offered in three sizes and three wattages.

The Sintra series provides three distinct power levels to accommodate diverse project requirements. This series is predominantly dimmable and boasts a high CRI, ensuring accurate color representation.

Depending on the lighting requirements, various wattages of the Sintra can be utilized. The 7W option is suitable for smaller spaces, creating a warm minimalist ambiance with a lumen output of 674-775lm. The 15W variant, larger in size and offering a higher lumen output of 1393-1561lm, is ideal for hospitality or retail projects, or buildings with slightly elevated ceilings. The 27W variant, with a lumen output of 2786-3121lm, is recommended for larger (retail) projects with higher ceilings, providing optimal lighting.

One of the primary benefits of the Sintra product line is its prompt delivery from stock. Moreover, the Sintra series is compatible with all prevalent 3-phase rail systems and includes a standard adapter, facilitating swift and effortless installation.

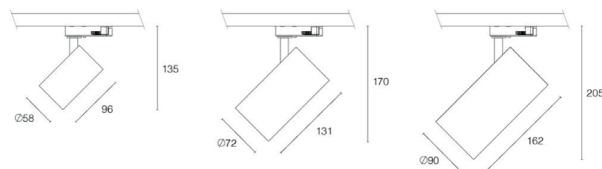


## WHAT MAKES SINTRA SPECIAL?

- ✓ Universal adapter suitable for all standard 3-phase rail systems
- ✓ Primary Dimmable and high CRI
- ✓ Constructed using high-quality branded components
- ✓ Offered in three distinct power levels
- ✓ Prompt delivery

### Additional alternatives:

- 15°, 24°, 40° or 60° reflector
- CCT 2700K, 3000K, or 4000K
- Front ring color options: black or honeycomb louvre.



# SCAN & CONTACT US TO EXPERIENCE IT YOURSELF!

We acknowledge the challenge of selecting the ideal fixture for your project area. Hence, we provide the option to request a demo box. This allows you to personally witness how our fixtures can transform a room's ambiance and how lighting can convey a company's emotions and values. If you are interested in exploring how lighting can enhance experiences, please reach out to us by scanning the QR code.



**DISCOVER MORE.**



**MASTERING THE NEEDS OF LIGHTING.**

**LUMIPARTS**

WWW.LUMIPARTS.NL  
INFO@LUMIPARTS.NL  
+31(0)172 574500

*Follow us for more!*

@LUMIPARTSLIGHTING





# LUMIPARTS

Nijverheidsweg 2 | 2421 LR Nieuwkoop | T +31(0)172 574 500

[info@lumiparts.nl](mailto:info@lumiparts.nl) | [www.lumiparts.nl](http://www.lumiparts.nl)

*Follow us for more!*

@LUMIPARTSLIGHTING

