



**MASTERING THE
NEEDS OF FLEXIBLE
DIPSWITCH LIGHTING**

The background of the entire page is a dark, textured collage of various lighting fixtures, including circular reflectors, lenses, and housings, some in shades of blue and green. The Lumiparts logo is positioned in the upper left, featuring a stylized 'L' and 'P' symbol followed by the word 'LUMIPARTS' in a bold, sans-serif font. Below the logo is the tagline 'Mastering the needs of lighting'.

LUMIPARTS

Mastering the needs of lighting

PERSONAL APPROACH

"We passionately enlighten our business partners by providing flexible and personalized lighting solutions while expanding nationally and internationally through healthy and sustainable relationships."

At Lumiparts, we believe in a global passion for people, entrepreneurship, and adventure. We inspire ourselves and others to continually evolve because driven passion never stands still. Lumiparts illuminates the passion of entrepreneurs and end-users in a unique way by providing complete lighting solutions. With a personalized approach, we create tailor-made products and keep them in stock. Together, we master the needs of lighting!

We specialize in delivering and creating flexible lighting solutions that can be tailored to every specific customer and project requirement. We maintain close contact with our customers and, in addition to our standard lighting products, offer customized and tailor-made White Label and OEM fixtures. We understand that each project is unique, and personalization is the key to every lighting project! At the service level, we provide our own assembly department where all preferences are welcome, various market-focused leaflets, demo boxes, and, of course, a listening ear. This way, we offer the best advice and let our products, partners, and end customers shine together.

ASSEMBLY, OEM & WHITE LABEL

All fixtures and special requests find their way to our assembly department. Here, our skilled team meticulously prepares all products for use, seamlessly merging various components into a unified whole. We customize each product, ensuring precision in cutting LED profiles down to the millimeter using our specialized saw table.

Furthermore, we provide the opportunity to rebrand our products, allowing you to establish your own brand identity. Our passionate team, during the assembly process, ensures that your selected products bear your unique brand label. This is made possible through the White Label & OEM concept. Choose your fixtures, share your company details, logo, and preferred product numbers with us, and we will take care of the rest for you!

"To illuminate our world by inspiring our employees, customers and suppliers with our passion for lighting.

Together, we'll be the masters of lighting."

FLEXIBLE SOLUTIONS

We go that extra mile to exceed your expectations and remain flexible. Our business office, through its procurement policies, ensures a wide range of components is always available, allowing many of our fixtures to be assembled and delivered directly from stock. Additionally, we source our components with attention to detail, making them interchangeable in most cases. This way, we always find a suitable solution for your project. Need a different reflector, ring, or driver? No problem! Our large warehouse, like the office, is located in Nieuwkoop, ensuring proximity and making us unique in providing flexible lighting solutions.

RELIABLE LIGHTLAB

Because we've been active since 1985, we have accumulated extensive knowledge within the market. We operate based on expertise and craftsmanship at both the product and service levels. We align our efforts with the needs of each segment and have our own light lab where we meticulously measure our fixtures. This allows us to provide accurate information and generate clear EPREL reports. These EPREL reports are made available to every partner, and it's also possible to receive the LDT files of our fixtures. We are enthusiastic about embarking on new ventures and are always open to sharing knowledge on a global scale.



LUMPARTS
Mastering the needs of fighting

LUMPARTS





LUCIO

SURFACE OR PENDANT



The Lucio provides an advanced lighting experience. With a dip switch offering three wattages and three color temperatures (3000K, 3500K, 4000K), you can effortlessly create your desired atmosphere. This ensures you always have the perfect amount of light, regardless of the room size or ambiance you seek.

Designed with adaptability in mind, the Lucio fixture is ideal for those who value control over their lighting. Equipped with a standard blind plate and the option for easy upgrade to an uplight, the Lucio effortlessly adjusts to evolving needs. Whether you prefer direct lighting or wish to create an indirect, atmospheric glow on the ceiling, Lucio provides the flexibility to cater to your preferences.

CASAMBI

STANDARD DALI 2 DIMMABLE



UP LIGHT OPTION

The blank plate of the Lucio comes standard with the luminaire. It can be easily exchanged with the uplight with just one click as desired. The uplight provides indirect light at the top of the luminaire and is also available in black for all sizes. In the uplight variant, the light output of the Lucio is distributed, with 70% accounting for direct light at the bottom and 30% for the uplight. The light color of the uplight matches that of the direct light

ENERGY EFFICIENT UP TO 121 LM/W



CONNECT MULTIPLE LUCIOS

Connect multiple Lucio fixtures with our special connection pieces and create a seamless design. With the option to add a 15 meter roll of opal finish, you make your design an aesthetic whole.



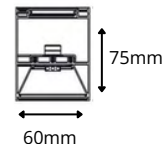
COLOURS

DIPSWITCH

Special dip switch on the top of the fixture with the option to switch between light colors 3000K, 3500K and 4000K. Light output can be controlled on the driver.



900/1200/1500/2400mm



Accessories

- Suspension Set Black 2 meter
- Suspension Set White 2 meter
- Surface mounted set
- Straight connection 1 piece
- Lucio opal diffuser rol 15000mm

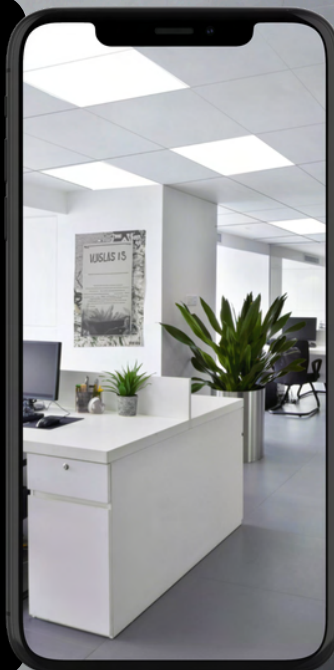




PLATA LED PANEL

The Plata is our new efficient backlit LED panel with a UGR of less than <math><18</math>. The Plata uses the innovative Dipswitch technology, which allows you to effortlessly adjust the light intensity and color temperature. This means you can easily meet the latest energy efficiency standards without the need for extensive renovations.

By setting the light colors to 3000K, 3500K or 4000K, you can tailor the office lighting to the specific preferences of your customers during the project and adjust them later if necessary. With a remarkable luminance efficiency of up to 131 lm/watt, Plata not only provides brilliant lighting, but also does so with a minimal environmental footprint.



MICROPRISMATIC DIFFUSER

With a UGR value of less than <math><18</math>, this backlit panel is a true addition to office and Energy Label-C projects. The Plata offers much better light distribution and comfort through its shielding compared to other comparable led panels.

ENERGIE EFFICIENT TOT 131 LM/W



DIPSWITCH

A special Dip switch for 3 different light colors including 3000K, 3500K and 4000K. The power can be controlled on the driver and can be set to different wattages ranging from 22W (2705lm) up to 38W (4566lm) at 3500K.



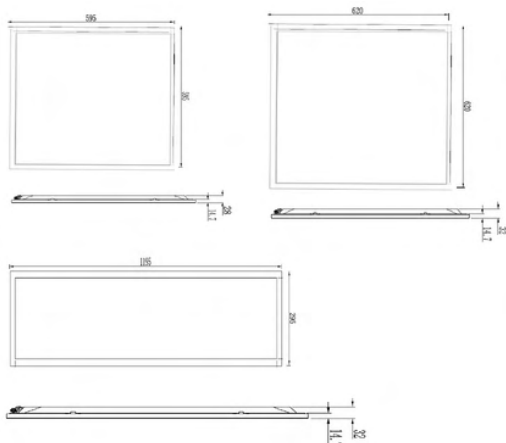
COLOURS



FREEDOM IN MOUNTING

With the option to use the Plata as a pendant, inlay or surface-mounted fixture using the surface-mounted frame, this fixture is even suitable for concrete ceilings.

- ✓ The Plata is dimmable on/off as standard
- ✓ Optionally available DALI 2 (better compatible, more addresses, backwards compatible with DALI)
- ✓ Easily add to Casambi networks via broadcasting



Accessories

The Plata in combination with the construction frame makes it possible to facilitate renovation projects smooth and quickly. This solution is also ideal for use with concrete ceilings, allowing you to easily provide quality lighting.







OZOLA LED PANEL



The versatile and contemporary Ozola offers no fewer than 3 mounting options. Thanks to its slim height of 8 cm, the design of the Ozola fits perfectly into any environment. In addition, this fixture makes it possible to create a modern and playful atmosphere in various rooms. This is enhanced by the Dipswitch with which you can switch between the light colors 3000K / 3500K / 4000K and the adjustable light output of 100% / 75% / 50%.

The Ozola can be mounted as a wall, pendant or recessed luminaire and is available in four different sizes: 480 mm, 600 mm, 900 mm and 1200 mm. The pendant version makes it possible to lower high ceilings, making the environment immediately feel warmer. The Ozola is DALI dimmable and available in gray, black or white.

STANDARD DALI DIMMABLE



DIPSWITCH

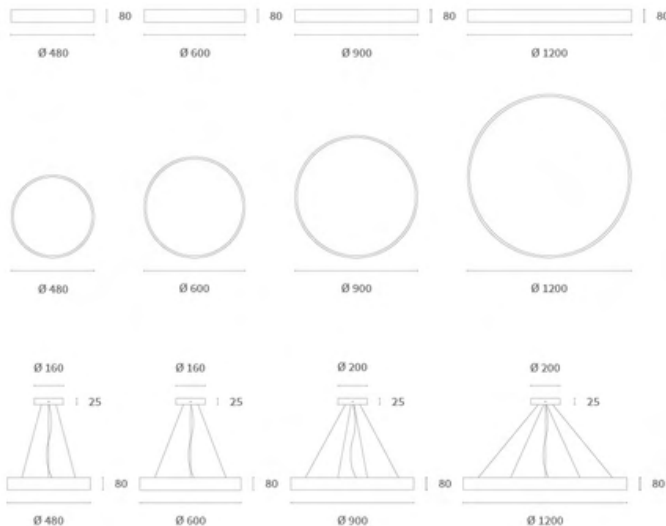
A special Dip switch for 3 different light colors including 3000K, 3500K and 4000K. The power can be controlled on the driver and can therefore be set to 50%, 75% or 100% lightoutput.

COLOURS



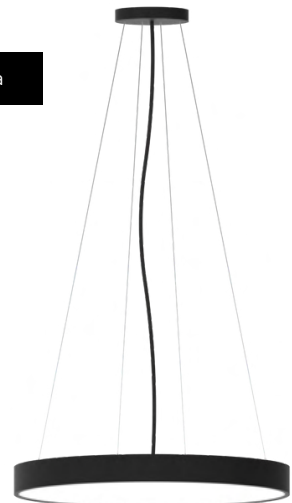
FREEDOM IN MOUNTING

With the option to use the Ozola as a wall, pendant or surface-mounted fixture, this fixture provides a lot of freedom in creativity.



Accessories

Pendant sets for the Ozola





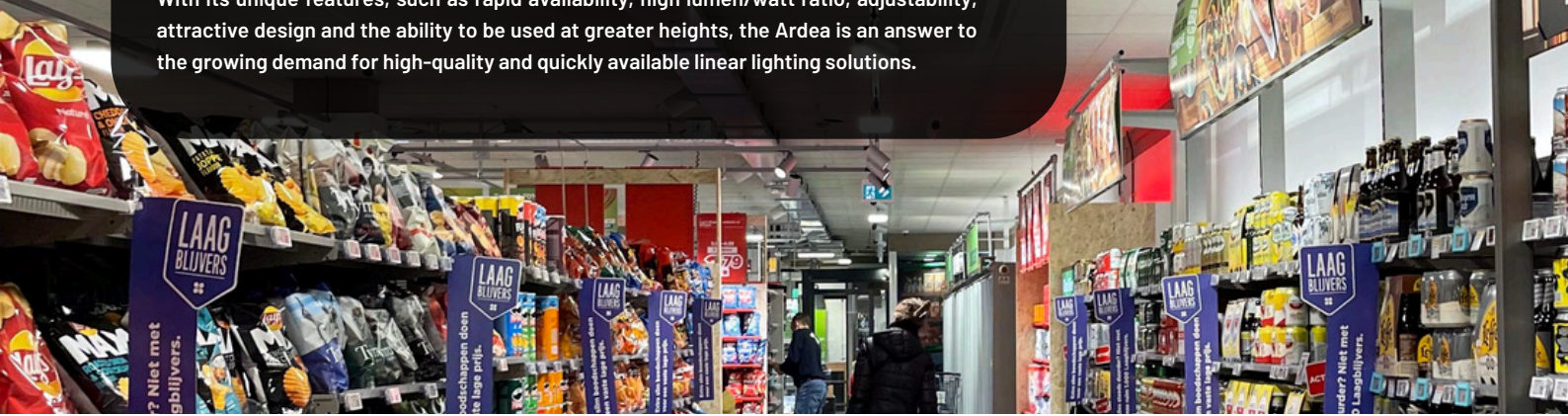


ARDEA TRACKLIGHT



With its impressive lumen-to-watt ratio up to 146lm/W, the Ardea not only helps provide bright light but also minimizes energy consumption. This contributes to lower operating costs in the long term and promotes sustainability. The Ardea has an easy plug and play installation and you can click it into the 3-phase rail within a few seconds, after which it works immediately. The Ardea is available in a light color of 3000K and 4000K and is equipped with a smart dip switch for different wattage settings, which allows you to determine the light output of the fixture and adjust it individually.

With its unique features, such as rapid availability, high lumen/watt ratio, adjustability, attractive design and the ability to be used at greater heights, the Ardea is an answer to the growing demand for high-quality and quickly available linear lighting solutions.



STRONG & EFFICIENT FOR HEIGHTS



The linear variant offers up to 8,000 lumens for aisles in shops and warehouses, the Ardea panel with an output of 12,000 lumens is also suitable for general lighting in spaces up to 7 meters high. The Ardea is not only powerful, but also energy efficient, with an impressive lumen/watt ratio up to 146lm/W.



COLOURS



DIPSWITCH

A special dip switch to control the light output of the fixture. It has 4 settings for determining the amount of light.

ARDEA PANEL

PLUG AND PLAY

You can click the Ardea into the 3-phase rail within a few seconds, after which it works immediately. This saves time and therefore costs during installation!

ARDEA LINEAR

ARDEA OPAL





CECID TRACKLIGHT

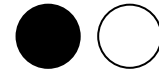


With its hidden in-track driver and intelligent dip switch, the Cecid offers flexibility and fosters creativity. This linear fixture is available in three sizes (900/1200/1500/2400mm) and comes standard with an opal finish, a reflector finish is also available upon request which provides flexibility to customize. Known for its aesthetic appeal and adaptability, this fixture is designed to support creative expression.

The Cecid features a smart dip switch, enabling control over light color temperature and output. With the Cecid, users can seamlessly switch between different lighting environments by adjusting the dip switch to 3000K, 3500K, or 4000K.

INVISIBLE IN-TRACK DRIVER

The Cecid is equipped with an invisible in-track driver. This ensures a clean design.



COLOURS

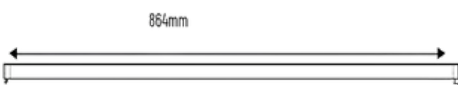
REFLECTOR OPTION

The Cecid comes with a opal diffuser. Personalize your fixture by using reflector inserts instead of the opal finish.

DIPSWITCH

Switch light color temperatures such as 3000K, 3500K and 4000K in no time with the special dip switch, or control the light output via the driver.

ENERGY EFFICIENT UP TO 124 LM/W



Accessories

Create a playful and contemporary design with the Cecid. The Cecid is equipped with an in-track driver and therefore has a sleek and modern appearance, which is ideal for revealing designs.

White LED driver in-track 35W for Track light Cecid


Black LED driver in-track 35W for Track light Cecid

White LED driver in-track 35W for Track light Cecid DALI dimmable


Black LED driver in-track 35W for Track light Cecid DALI dimmable

LET'S MAKE IT SMART CASAMBI


Official certified commissioning partner




Group control




Scene control




GPS control




Time & calendar control




Colour temperature



Light Sensors




Light visuals



Animations



Light output



PIR/Motion Sensors



Cloud Solution



Easily Expandable



Cloud Synchronisation



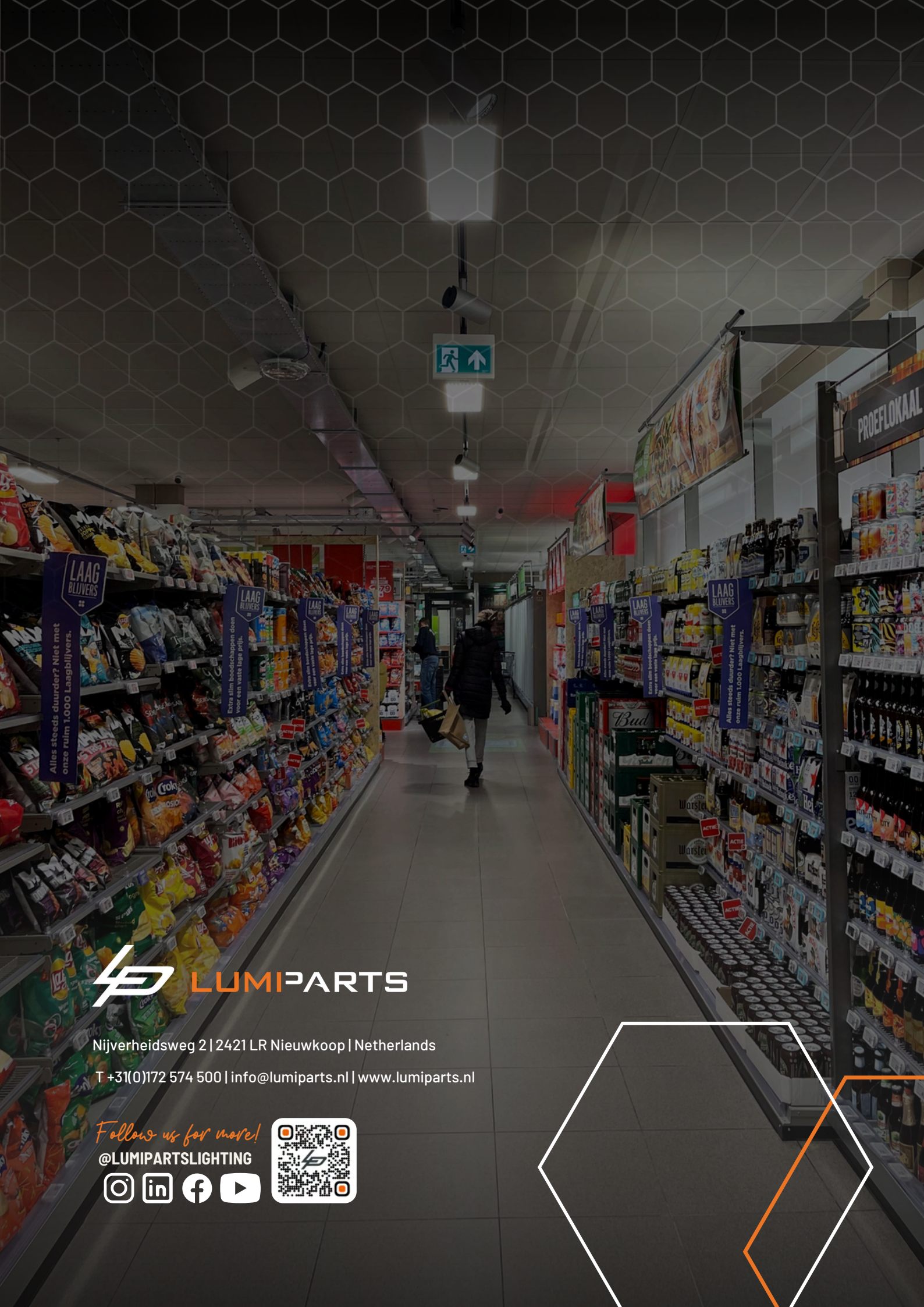
Mastering the needs of **Dipswitch** lighting.

LET'S STAY IN TOUCH **& EXPERIENCE YOURSELF**



We recognize that choosing the right lighting solution can be challenging. Do you have any questions about this brochure, the technology, or our products? Feel free to get in touch! If you prefer to experience our lighting firsthand, we offer the opportunity to request a complimentary demo. During the demo, we'll showcase how our smart, sustainable, and functional lighting can transform your space.

Don't hesitate to contact us by scanning the QR code.



PROEFLOKAAL

LAAG BLUIVERS
Alles steeds duurder? Niet met onze ruim 1.000 Laagbluivers.

LAAG BLUIVERS
Extra slim berekeningen doen voor een vast lage prijs.

LAAG BLUIVERS
Extra slim berekeningen doen voor een vast lage prijs.

LAAG BLUIVERS
Extra slim berekeningen doen voor een vast lage prijs.

LAAG BLUIVERS
Extra slim berekeningen doen voor een vast lage prijs.

LAAG BLUIVERS
Extra slim berekeningen doen voor een vast lage prijs.

LAAG BLUIVERS
Alles steeds duurder? Niet met onze ruim 1.000 Laagbluivers.



Nijverheidsweg 2 | 2421 LR Nieuwkoop | Netherlands
T +31(0)172 574 500 | info@lumiparts.nl | www.lumiparts.nl

Follow us for more!

@LUMIPARTSLIGHTING

