



MASTERING
THE NEEDS OF
SUSTAINABLE
LIGHTING.

 **LUMIPARTS**
Mastering the needs of lighting

1985

PERSOONLIJKE AANPAK

"We passionately enlighten our business partners by providing flexible and personalized lighting solutions while expanding nationally and internationally through healthy and sustainable relationships."

Bij Lumiparts geloven we in wereldwijde passie voor mensen, ondernemerschap en avontuur. We stimuleren onszelf en anderen om verder te ontwikkelen, want gedreven passie staat nooit stil. Lumiparts helpt de passie van ondernemers en eindgebruikers uit te lichten door op unieke wijze complete verlichtingsoplossingen te bieden. Met een persoonlijke aanpak maken we producten op maat en houden we deze op voorraad. Together we master the needs of lighting!

We hebben onszelf gespecialiseerd in het leveren en het maken van flexibele verlichtingsoplossingen die kunnen worden afgestemd op iedere specifieke klant- en projectbehoefte. We staan dan ook in nauw contact met de klant en bieden naast onze standaard verlichtingsproducten ook op maat gemaakte én naar wens samengestelde White Label en OEM-armaturen. We begrijpen namelijk, dat ieder project uniek is en dat personalisatie de sleutel is van ieder verlichtingsproject! Op serviceniveau bieden we daarom een eigen assemblageafdeling waar alle wensen welkom zijn, verschillende marktgerichte leaflets, demoboxen en natuurlijk een luisterend oor. Zo bieden we het beste advies en laten we samen onze producten, partners en eindklanten stralen.

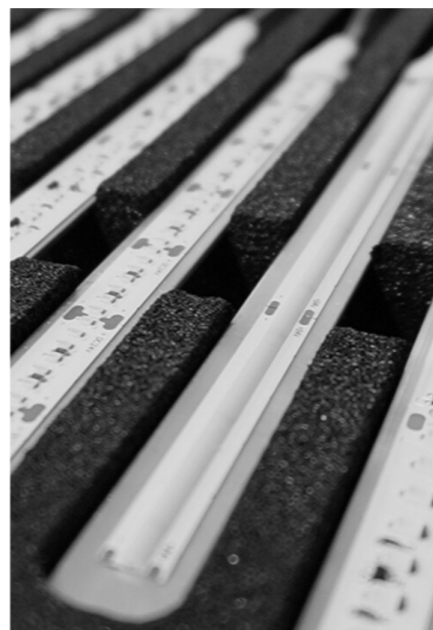


ASSEMBLAGE, OEM & WHITE LABEL

Alle armaturen en speciale wensen komen terecht op onze assemblageafdeling. Hier worden alle producten gereed gemaakt voor gebruik en maakt ons vakkundige team van verschillende onderdelen één geheel. We maken alle producten op maat én zorgen ervoor dat LED profielen tot op de millimeter worden afgezaagd met onze speciale zaagtafel.

We bieden ook de mogelijkheid om onze producten te rebranden om deze je eigen (huis)merk te maken. Ons passievolle team zorgt er bij assemblage voor dat onze producten worden voorzien van je eigen merklabele. Dit wordt bereikt door middel van het White Label & OEM-concept. Kies je armaturen, stuur je bedrijfsgegevens, logo en gewenste product nummers aan ons toe en wij gaan voor je aan de slag!

*"To illuminate our world by inspiring our employees, customers and suppliers with our passion for lighting
Together, we'll be the masters of lighting."*



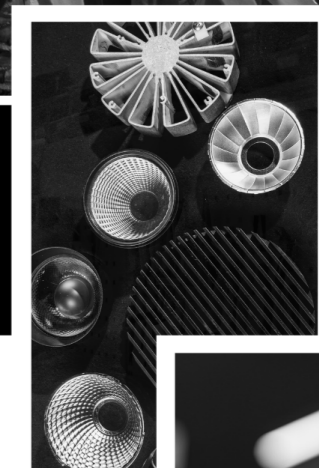
FLEXIBELE

FLEXIBELE OPLOSSINGEN

We doen nèt dat stapje extra om je verwachtingen te overtreffen en zijn flexibel. Ons bedrijfsbureau zorgt er met haar inkoopbeleid voor dat er altijd een ruim assortiment aan onderdelen beschikbaar is, waardoor veel van onze armaturen direct uit voorraad te assembleren en te leveren zijn. Daarnaast kopen we onze onderdelen met oog voor detail in, waardoor deze in de meeste gevallen onderling uitwisselbaar zijn, zo vinden we altijd een passende oplossing voor je project. Een andere reflector, ring of driver? Geen probleem! Ons grote magazijn is net als het kantoor gevestigd in Nieuwkoop waardoor we altijd dichtbij zijn en daarmee uniek zijn in het bieden van flexibele verlichtingsoplossingen.

BETROUWBARE LICHTMETINGEN

Omdat we sinds 1985 actief zijn, hebben we veel kennis opgedaan binnen de markt. We handelen dan ook vanuit kennis en vakmanschap op product- en serviceniveau. We werken toe naar de behoeften van ieder segment en hebben ons eigen lichtlab, waar we onze armaturen nameten zodat accurate informatie kunnen bieden en een overzichtelijk EPREL-rapport kunnen opstellen. Deze EPREL-rapporten worden voor iedere partner beschikbaar gesteld. Zo is het ook mogelijk om de LDT files van onze armaturen te ontvangen. We gaan graag een avontuur aan en staan altijd open voor het delen van kennis, wereldwijd.



PRODUCT IMPACT EN

Duurzaamheid



Met ons lichtlaboratorium streven we naar uitmuntendheid in duurzaamheid, efficiëntie, kwaliteit en uniformiteit.

- ✓ Onze productinnovatie is gericht op het verminderen van de impact op het milieu.
- ✓ Onze producten worden gemaakt in een eerlijke omgeving en meestal van gerecycled materiaal. We ondersteunen relamping programma's.
- ✓ Een hulpmiddel voor het berekenen van CO2-voetafdrukken
- ✓ Voldoet aan energiecodes en wereldwijde normen voor duurzaam bouwen.
- ✓ Samenwerken met sociale projecten bevordert gelijkheid en inclusiviteit wereldwijd.



Wij innoveren onze producten met duurzaamheid en klantbehoeften als prioriteit. De maatregelen die we nemen om dit te realiseren omvatten zoal ons lichtlab een efficiëntere reflector om het best mogelijke lumenrendement te creëren en het verminderen van grondstof- en energieverbruik.



We hanteren een eerlijk productieproces en kijken naar zowel de levensduur als de herkomst van materialen. We vervaardigen producten van gerecyclede materialen en zorgen ervoor dat onze producten ook weer recyclebaar zijn.



Het creëren van maatschappelijke impact door samen te werken met sociale projecten en fair trade leveranciers waarbij kansen worden geboden aan individuen met arbeidsbeperkingen en bijgedragen wordt aan sociale duurzaamheid en inclusiviteit.

Zie, functioneer en voel je beter. Human centric lighting modules



VERBETER DE GEZONDHEID MET
TUNABLE WHITE LIGHTING OF BIOUP

TUNABLE WHITE

Met onze Tunable White oplossing kunnen het helderheidsniveau en de kleurtemperatuur worden aangepast aan het tijdstip van de dag. De reden hiervoor is dat een witte, of in dit geval koele, lichtkleur een positief effect heeft op ons lichaam en functioneren. Met Tunable White modules kunnen we het biologische ritme van ons lichaam volgen en natuurlijk daglicht nabootsen. Bovendien zorgt dit proces ervoor dat het concentratieniveau van mensen gelijkmatig over de dag wordt verdeeld.

BIOUP

De BioUp technologie voegt hier nog iets aan toe. Deze verbetert bijvoorbeeld het LED-spectrum met cyaan licht, waardoor de biologische impact op het menselijk lichaam met ongeveer 42% toeneemt. De verbetering van het cyaan licht (4000K, CRI>80, R9>50) zorgt er met zijn eigenschappen voor dat er geen verandering is tussen de visuele kleurindruk en de visuele lichtopbrengst, zodat de nabootsing van het ritme nog natuurlijker is.

Melanopische verlichting

Wanneer melanopische verlichting wordt toegepast in een gebouw, biedt dit de voordelen van natuurlijk daglicht. Dit verbetert het visueel comfort, het welzijn en de prestaties. Melanopisch licht heeft een directe relatie met lichtintensiteit, licht-donkercyclus (circadiaan ritme) en het lichtspectrum.

Effect van serotonine

Melanopisch licht beïnvloedt ook onze serotonineniveaus. Serotonine is verantwoordelijk voor de productie van ons gelukshormoon. Een disbalans van het gelukshormoon kan zich bijvoorbeeld uiten in een slecht humeur en concentratieproblemen. Serotonine activeert ook de productie van melatonine in ons lichaam, wat nodig is voor een goede nachtrust.



LED MODULES

De lichtkleur van een armatuur is erg belangrijk voor het uiteindelijke doel van een project. Bij het presenteren van goederen, merchandise en kunstwerken helpt het juiste verlichtingsmodule om een speciale sfeer te creëren en de aandacht van het publiek te trekken. Verschillende producten, materialen en kleuren vereisen vaak een speciale lichtoutput.



PREMIUM WHITE & PREMIUM COLOUR

De Premium White en Premium Colour modules verbeteren winkeldisplays door items authentiek te presenteren. Premium White accentueert wit op levendige wijze en verwarmt andere kleuren op natuurlijke wijze. Premium Colour zorgt voor een evenwichtig contrast en levendige verzadiging, waardoor de aandacht op producten wordt gevestigd. Samen zorgen ze voor een aantrekkelijke en authentieke winkelervaring.



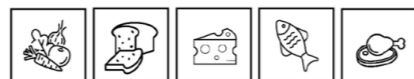
ZONDER FASHION MODULES



MET FASHION MODULES

FRESH FOOD

De schappen met vers voedsel vallen vaak op en dit wordt vooral beïnvloed door de juiste keuze van verlichtingskleuren. De kleur van het licht boven het schap bepaalt niet alleen de aantrekkelijkheid van het voedsel, maar heeft ook een positieve invloed op het voorkomen van verkleuring van het voedsel zelf. Vers voedsel heeft daarom andere verlichtingskleuren nodig dan "droge" artikelen.



ZONDER FOOD MODULES



MET FOOD MODULES

ART

De kunstmodule laat tentoonstellingen en objecten zien en accentueert hun authentieke kleuren. Superieure kleurnauwkeurigheid en lichtkwaliteit worden bereikt door full-spectrum technologie, met hoge CRI-waarden van 97. Deze module garandeert een maximale kleuruniformiteit van de lichtbron. Bovendien beschermen de LED's in deze module de kunstwerken zelf, waardoor een optimale kwaliteit wordt gegarandeerd.



ZONDER ART MODULE



MET ART MODULE

PRODUCTEN



BAZA



De Baza biedt 125 lm/W, verblindingsvrij licht (UGR <19), DALI, Tunable White, BioUp, en noodverlichting. Ideaal voor kantoren, scholen en openbare ruimtes.

OCLA



De Ocla is eenvoudig te installeren in smalle plafonds, heeft IP44, en is geschikt voor kantoren, scholen, en publieke ruimtes. Uit te rusten met Bioup of Tunable White module.



LYNX MAXI II

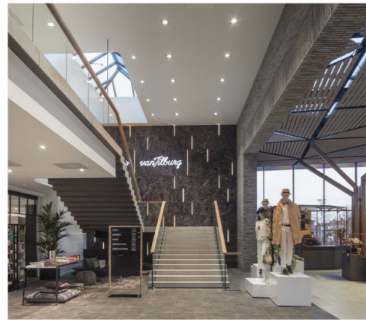


De slanke Lynx II biedt tot 123 lm/W, is draaibaar, kantelbaar en gemaakt van duurzaam aluminium. Met CRI 90 Ra is hij uitbreidbaar voor voedsel-, mode- en kunsttoepassingen.

FLO



De energiezuinige Flo downlighter, tot 124 lm/W, is ideaal voor retail. Beschikbaar met dimbare driver, honingraatstructuur, en vaste of kantelbare uitvoering voor energiebesparing.



EXO

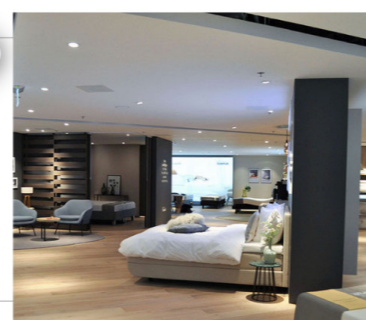


De Exo heeft een cardanisch ontwerp met verstelbare stralingshoeken (15°, 24°, 36°, 60°) en biedt tot 4000lm binnen een compacte 10 cm diameter. Efficiëntie tot 124 lm/W.

MOVIMENTO



De Movimento is een krachtige, cardanische armatuur met tot 147 lm/W, gericht licht en optionele fashion, food, en art modules.



WALLY



De Wally in-Track en recessed bieden een brede lichtbundel, hoge CRI, en een lumenoutput tot 134 lm/W. Uit te rusten met DALI of Casambi voor optimale lichtverdeling en levendige kleurweergave.

PLATA



Het Plata inlegarmatuur biedt tot 120 lm/W met slimme side-led-technologie en dunne panelen, ideaal voor utiliteitsbouw.



LUCIO

Lucio biedt instelbare lichtoutput, 3 kleurtemperaturen (3000K, 3500K, 4000K), en is aanpasbaar met blindplaat en optionele uplight voor directe of indirecte verlichting.

XLH

The XLH and XLH up-down luminaires offer 0.9 m, 1.2 m, and 1.5 m options, CRI 90, light colors (3000K, 3500K, 4000K), Casambi, and Tunable White/Bioup modules, with opal or micro-prismatic finishes and optional sensors.



STRINGLINE

Deze lichtlijn is eenvoudig te installeren en voorzien van een 50CM connector. Je kunt spots in de Stringline klikken, ideaal voor verlichting in industriële projecten, magazijnen en retail.

ASTA

Het Asta Pendelarmatuur is efficiënt (130 lm/W bij 26.5W en 129 lm/W bij 46W) en biedt hoge kleurweergave, perfect voor flexibele werkplekverlichting.



CECID

De Cecid biedt flexibiliteit met een verborgen driver, dipswitch (3000K, 3500K, 4000K) en is beschikbaar in drie maten met opaal of reflectorafwerking.

ARDEA

De 3-delige Ardea tracklight serie biedt hoge lichtopbrengst, is eenvoudig te installeren in de 3-fase rail en ideaal voor retail- en utiliteitsprojecten.



TUBO SHORT

Deze inbouwspot verbruikt 25.5W en levert 3132lm met een efficiëntie van 123 lm/W, waardoor hij energie bespaart zonder aan helderheid te verliezen.

PINTA IN TRACK

Krachtig, met geïntegreerde driver. De hoge lichtstroom, de prachtige kleurweergave en het compacte design kenmerken de Pinta In-track als allrounder voor retailprojecten.



STIO

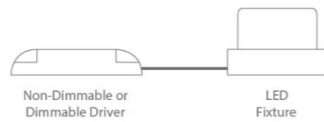
De Stio levert perfecte productpresentatie met de Premium White-module en 154 lm/W efficiëntie. Duurzaam, energiezuinig, en eenvoudig te installeren in een 3-fase railsysteem.



Baza

Downlight
Fixed

Scan QR code for Baza in black



Also available



Diameter	110mm						140mm							
Reflector	Matt 60°													
System Power	8.5W	8.7W	13.6W	14.1W	20.3W	20.7W	9W	8.9W	12.4W	12.3W	18.2W	18W	21.1W	20.8W
CRI	>80Ra						>80Ra							
CCT	3000K	4000K	3000K	4000K	3000K	4000K	3000K	4000K	3000K	4000K	3000K	4000K	3000K	4000K
System Lumen	735lm	766lm	1189lm	1232lm	1620lm	1668lm	921lm	991lm	1387lm	1488lm	1988lm	2128lm	2281lm	2452lm
System Efficacy	86lm/W	88lm/W	87lm/W	87lm/W	80lm/W	80lm/W	102lm/W	111lm/W	112lm/W	121lm/W	109lm/W	118lm/W	108lm/W	118lm/W
Driver	200mA	200mA	350mA	350mA	500mA	500mA	225mA	225mA	350mA	350mA	500mA	500mA	600mA	600mA
L+B values (50.000 hr)	L80B10 (50.000h)													

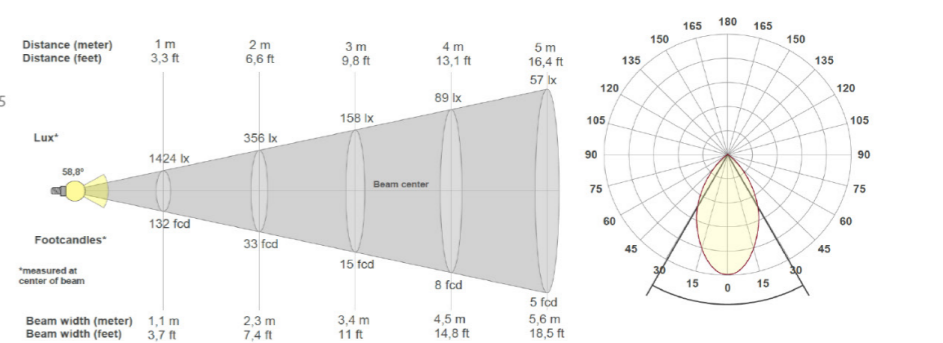
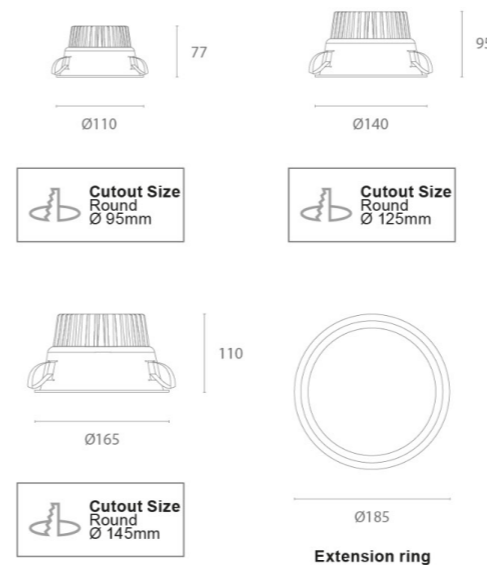
Diameter	165mm													
Reflector	Matt 60°													
System Power	9.1W	9.1W	12.7W	13.2W	18.3W	19.2W	21.5W	22.3W	26.2W	27.3W	30.4W	31W		
CRI	>80Ra													
CCT	3000K	4000K	3000K	4000K	3000K	4000K	3000K	4000K	3000K	4000K	3000K	4000K		
System Lumen	988lm	994lm	1433lm	1441lm	2007lm	2048lm	2319lm	2348lm	2747lm	2781lm	3106lm	3136lm		
System Efficacy	108lm/W	109lm/W	113lm/W	109lm/W	110lm/W	107lm/W	108lm/W	105lm/W	105lm/W	102lm/W	102lm/W	101lm/W		
Driver	225mA	225mA	350mA	350mA	500mA	500mA	600mA	600mA	700mA	700mA	800mA	800mA		
L+B values (50.000 hr)	L80B10 (50.000h)													

PRODUCT LIST

Article No.	Product Name	Color	CCT	CRI	System Lumen	System Power	System Efficacy	Reflector	Cutout size
2.11.4499 / 2.11.4502	Baza	White	3000K	>80Ra	735lm	8.5W	86lm/W	Matt 60°	Ø 95mm
2.11.4505 / 2.11.4508	Baza	White	4000K	>80Ra	766lm	8.7W	88lm/W	Matt 60°	Ø 95mm
2.11.4511 / 2.11.4514	Baza	White	3000K	>80Ra	1189lm	13.6W	87lm/W	Matt 60°	Ø 95mm
2.11.4517 / 2.11.4520	Baza	White	4000K	>80Ra	1232lm	14.1W	87lm/W	Matt 60°	Ø 95mm
2.11.4523 / 2.11.4526	Baza	White	3000K	>80Ra	1620lm	20.3W	80lm/W	Matt 60°	Ø 95mm
2.11.4529 / 2.11.4532	Baza	White	4000K	>80Ra	1668lm	20.7W	80lm/W	Matt 60°	Ø 95mm
2.11.4535 / 2.11.4538	Baza	White	3000K	>80Ra	921lm	9W	102lm/W	Matt 60°	Ø 125mm
2.11.4541 / 2.11.4544	Baza	White	4000K	>80Ra	991lm	8.9W	111lm/W	Matt 60°	Ø 125mm
2.11.4547 / 2.11.4550	Baza	White	3000K	>80Ra	1387lm	12.4W	112lm/W	Matt 60°	Ø 125mm
2.11.4553 / 2.11.4556	Baza	White	4000K	>80Ra	1488lm	12.3W	121lm/W	Matt 60°	Ø 125mm
2.11.4559 / 2.11.4562	Baza	White	3000K	>80Ra	1988lm	18.2W	109lm/W	Matt 60°	Ø 125mm
2.11.4565 / 2.11.4568	Baza	White	4000K	>80Ra	2128lm	18W	118lm/W	Matt 60°	Ø 125mm
2.11.4571 / 2.11.4574	Baza	White	3000K	>80Ra	2281lm	21.1W	108lm/W	Matt 60°	Ø 125mm
2.11.4577 / 2.11.4580	Baza	White	4000K	>80Ra	2452lm	20.8W	118lm/W	Matt 60°	Ø 125mm
2.11.4583 / 2.11.4586	Baza	White	3000K	>80Ra	988lm	9.1W	108lm/W	Matt 60°	Ø 145mm
2.11.4589 / 2.11.4592	Baza	White	4000K	>80Ra	994lm	9.1W	109lm/W	Matt 60°	Ø 145mm
2.11.4595 / 2.11.4598	Baza	White	3000K	>80Ra	1433lm	12.7W	113lm/W	Matt 60°	Ø 145mm
2.11.4601 / 2.11.4604	Baza	White	4000K	>80Ra	1441lm	13.2W	109lm/W	Matt 60°	Ø 145mm
2.11.4607 / 2.11.4610	Baza	White	3000K	>80Ra	2007lm	18.3W	110lm/W	Matt 60°	Ø 145mm
2.11.4613 / 2.11.4616	Baza	White	4000K	>80Ra	2048lm	19.2W	107lm/W	Matt 60°	Ø 145mm
2.11.4619 / 2.11.4622	Baza	White	3000K	>80Ra	2319lm	21.5W	108lm/W	Matt 60°	Ø 145mm
2.11.4625 / 2.11.4628	Baza	White	4000K	>80Ra	2348lm	22.3W	105lm/W	Matt 60°	Ø 145mm
2.11.4631 / 2.11.4634	Baza	White	3000K	>80Ra	2747lm	26.2W	105lm/W	Matt 60°	Ø 145mm
2.11.4637 / 2.11.4640	Baza	White	4000K	>80Ra	2781lm	27.3W	102lm/W	Matt 60°	Ø 145mm
2.11.4643 / 2.11.4646	Baza	White	3000K	>80Ra	3106lm	30.4W	102lm/W	Matt 60°	Ø 145mm
2.11.4649 / 2.11.4652	Baza	White	4000K	>80Ra	3136lm	31W	101lm/W	Matt 60°	Ø 145mm

*Article No. with indicates DALI dimmable driver is included.

Scan QR code for Baza in black



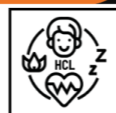
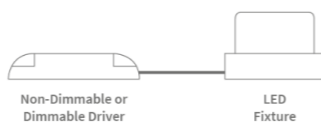
ALSO AVAILABLE

Article No.	Description	Color	Size
2.01.1261	Extension ring for Baza Ø 165mm	White	Ø 185mm
----- Emergency kit available on request			



Downlight
Fixed

Scan QR code for Baza in black



Also available

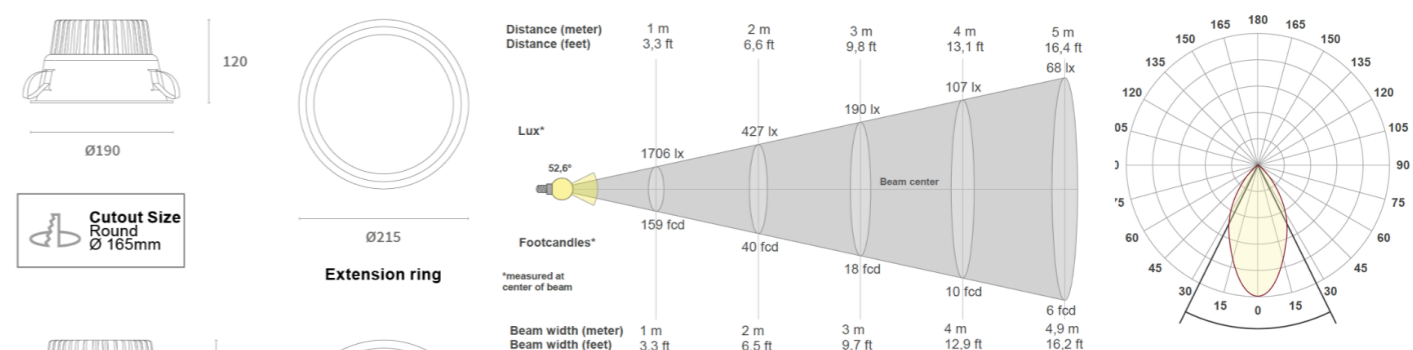


Diameter	190mm											
Reflector	Matt 60°											
System Power	9.1W	9.4W	12.8W	13.1W	18.7W	19.2W	21.5W	22.5W	26.4W	27.6W	30.3W	31.6W
CRI	>80Ra											
CCT	3000K	4000K	3000K	4000K	3000K	4000K	3000K	4000K	3000K	4000K	3000K	4000K
System Lumen	988lm	1034lm	1424lm	1482lm	2024lm	2177lm	2304lm	2442lm	2735lm	2889lm	3106lm	3251lm
System Efficacy	108lm/W	110lm/W	111lm/W	113lm/W	108lm/W	113lm/W	107lm/W	108lm/W	103lm/W	105lm/W	102lm/W	103lm/W
Driver	225mA	225mA	350mA	350mA	500mA	500mA	600mA	600mA	700mA	700mA	800mA	800mA
L+B values (50.000 hr)	L80B10 (50.000h)											

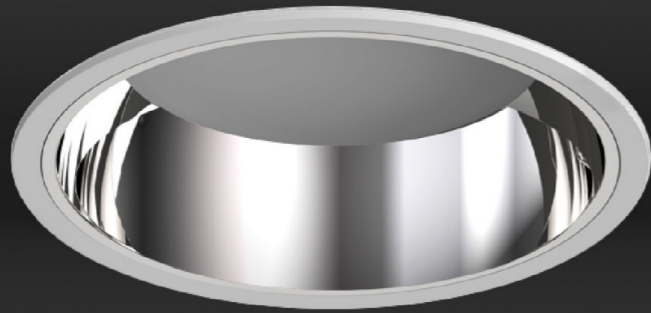
Diameter	230mm											
Reflector	Matt 60°											
System Power	12.6W	13.1W	18.5W	19.1W	21.6W	22.4W	26.2W	27.3W	30.5W	31.3W		
CRI	>80Ra											
CCT	3000K	4000K	3000K	4000K	3000K	4000K	3000K	4000K	3000K	4000K		
System Lumen	1508lm	1542lm	2139lm	2175lm	2461lm	2509lm	2916lm	2976lm	3322lm	3497lm		
System Efficacy	120lm/W	118lm/W	116lm/W	114lm/W	114lm/W	112lm/W	111lm/W	109lm/W	109lm/W	112lm/W		
Driver	350mA	350mA	500mA	500mA	600mA	600mA	700mA	700mA	800mA	800mA		
L+B values (50.000 hr)	L80B10 (50.000h)											

Article No.	Product Name	Color	CCT	CRI	System Lumen	System Power	System Efficacy	Reflector	Cutout size
2.11.4655 / 2.11.4658 ¹	Baza	White	3000K	>80Ra	988lm	9.1W	108lm/W	Matt 60°	Ø 165mm
2.11.4661 / 2.11.4664 ¹	Baza	White	4000K	>80Ra	1034lm	9.4W	110lm/W	Matt 60°	Ø 165mm
2.11.4667 / 2.11.4670 ¹	Baza	White	3000K	>80Ra	1424lm	12.8W	111lm/W	Matt 60°	Ø 165mm
2.11.4673 / 2.11.4676 ¹	Baza	White	4000K	>80Ra	1482lm	13.1W	113lm/W	Matt 60°	Ø 165mm
2.11.4679 / 2.11.4682 ¹	Baza	White	3000K	>80Ra	2024lm	18.7W	108lm/W	Matt 60°	Ø 165mm
2.11.4685 / 2.11.4688 ¹	Baza	White	4000K	>80Ra	2177lm	19.2W	113lm/W	Matt 60°	Ø 165mm
2.11.4691 / 2.11.4694 ¹	Baza	White	3000K	>80Ra	2304lm	21.5W	107lm/W	Matt 60°	Ø 165mm
2.11.4697 / 2.11.4700 ¹	Baza	White	4000K	>80Ra	2442lm	22.5W	108lm/W	Matt 60°	Ø 165mm
2.11.4703 / 2.11.4706 ¹	Baza	White	3000K	>80Ra	2735lm	26.4W	103lm/W	Matt 60°	Ø 165mm
2.11.4709 / 2.11.4712 ¹	Baza	White	4000K	>80Ra	2889lm	27.6W	105lm/W	Matt 60°	Ø 165mm
2.11.4715 / 2.11.4718 ¹	Baza	White	3000K	>80Ra	3106lm	30.3W	102lm/W	Matt 60°	Ø 165mm
2.11.4721 / 2.11.4724 ¹	Baza	White	4000K	>80Ra	3251lm	31.6W	103lm/W	Matt 60°	Ø 165mm
2.11.4727 / 2.11.4730 ¹	Baza	White	3000K	>80Ra	1508lm	12.6W	120lm/W	Matt 60°	Ø 210mm
2.11.4733 / 2.11.4736 ¹	Baza	White	4000K	>80Ra	1542lm	13.1W	118lm/W	Matt 60°	Ø 210mm
2.11.4739 / 2.11.4742 ¹	Baza	White	3000K	>80Ra	2139lm	18.5W	116lm/W	Matt 60°	Ø 210mm
2.11.4745 / 2.11.4748 ¹	Baza	White	4000K	>80Ra	2175lm	19.1W	114lm/W	Matt 60°	Ø 210mm
2.11.4751 / 2.11.4754 ¹	Baza	White	3000K	>80Ra	2461lm	21.6W	114lm/W	Matt 60°	Ø 210mm
2.11.4757 / 2.11.4760 ¹	Baza	White	4000K	>80Ra	2509lm	22.4W	112lm/W	Matt 60°	Ø 210mm
2.11.4763 / 2.11.4766 ¹	Baza	White	3000K	>80Ra	2916lm	26.2W	111lm/W	Matt 60°	Ø 210mm
2.11.4769 / 2.11.4772 ¹	Baza	White	4000K	>80Ra	2976lm	27.3W	109lm/W	Matt 60°	Ø 210mm
2.11.4775 / 2.11.4778 ¹	Baza	White	3000K	>80Ra	3322lm	30.5W	109lm/W	Matt 60°	Ø 210mm
2.11.4781 / 2.11.4784 ¹	Baza	White	4000K	>80Ra	3497lm	31.3W	112lm/W	Matt 60°	Ø 210mm

¹Article No. with ¹ indicates DALI dimmable driver is included.
Scan QR code for Baza in black



Article No.	Description	Color	Size
2.01.1262	Extension ring for Baza Ø 190mm	White	Ø 215mm
2.01.1263	Extension ring for Baza Ø 230mm	White	Ø 260mm
-----	Emergency kit available on request		



Delight Online



Ocla IP44

Downlight
Fixed



Also available



Diameter	183mm					
Reflector	Matt 90°					
CCT	3000K	4000K	3000k	4000k	3000K	4000K
System Power	13,3W	13,3W	18,3W	18,3W	21,5W	21,5W
CRI	>80Ra					
System Lumen	1552lm	1615lm	2207lm	2307lm	2498lm	2649lm
System Efficacy	117lm/W	121lm/W	121lm/W	126lm/W	116lm/W	123lm/W
Driver	350mA	350mA	500mA	500mA	600mA	600mA
L+B values (50.000 hr)	L80B10 (50.000h)					



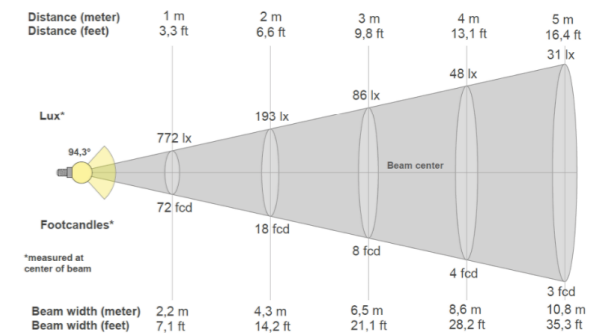
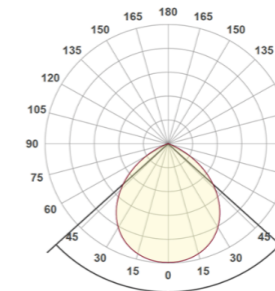
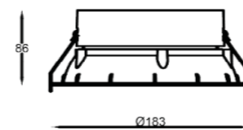
Diameter	223mm							
Reflector	Matt 90°							
System Power	13,3W	13,3W	18,3W	18,3W	22,6W	22,6W	26,5W	26,5W
CRI	>80Ra							
CCT	3000K	4000K	3000K	4000K	3000K	4000K	3000K	4000K
System Lumen	1658lm	1696lm	2477lm	2392lm	2707lm	2759lm	3207lm	3373lm
System Efficacy	125lm/W	128lm/W	135lm/W	130lm/W	119lm/W	122lm/W	121lm/W	127lm/W
Driver	350mA	350mA	500mA	500mA	600mA	600mA	700mA	700mA
L+B values (50.000 hr)	L80B10 (50.000h)							

PRODUCT LIST

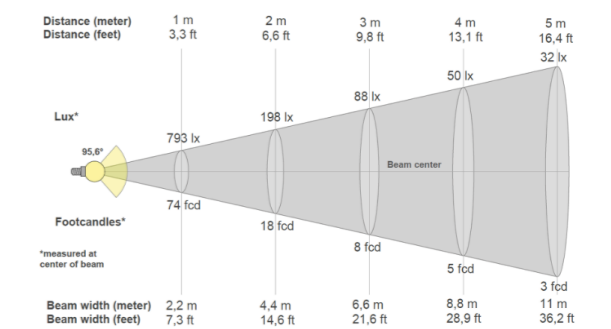
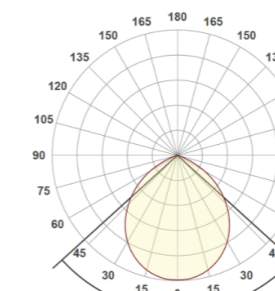
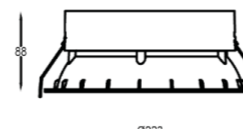
Article No.	Product Name	Color	CCT	CRI	System Lumen	System Power	System Efficacy	Reflector	Cutout size
2.11.8700 / 2.11.8703*	Ocla 183mm	White	3000K	>80Ra	1552lm	13.3W	117lm/W	Matt 90°	Ø 165mm
2.11.8706 / 2.11.8709*	Ocla 183mm	White	4000K	>80Ra	1615lm	13.3W	121lm/W	Matt 90°	Ø 165mm
2.11.8712 / 2.11.8715*	Ocla 183mm	White	3000K	>80Ra	2207lm	18.3W	121lm/W	Matt 90°	Ø 165mm
2.11.8718 / 2.11.8721*	Ocla 183mm	White	4000K	>80Ra	2498lm	18.3W	126lm/W	Matt 90°	Ø 165mm
2.11.8724 / 2.11.8727*	Ocla 183mm	White	3000K	>80Ra	2024lm	18.7W	116lm/W	Matt 90°	Ø 165mm
2.11.8730 / 2.11.8733*	Ocla 183mm	White	4000K	>80Ra	2117lm	19.2W	123lm/W	Matt 90°	Ø 165mm
2.11.8772 / 2.11.8775*	Ocla 223mm	White	3000K	>80Ra	1658lm	13.3W	125lm/W	Matt 90°	Ø 210mm
2.11.8778 / 2.11.8781*	Ocla 223mm	White	4000K	>80Ra	1696lm	13.3W	128lm/W	Matt 90°	Ø 210mm
2.11.8784 / 2.11.8787*	Ocla 223mm	White	3000K	>80Ra	2477lm	18.3W	135lm/W	Matt 90°	Ø 210mm
2.11.8790 / 2.11.8793*	Ocla 223mm	White	4000K	>80Ra	2392lm	18.3W	130lm/W	Matt 90°	Ø 210mm
2.11.8796 / 2.11.8799*	Ocla 223mm	White	3000K	>80Ra	2707lm	22.6W	119lm/W	Matt 90°	Ø 210mm
2.11.8802 / 2.11.8805*	Ocla 223mm	White	4000K	>80Ra	2759lm	22.6W	122/W	Matt 90°	Ø 210mm
2.11.8808 / 2.11.8811*	Ocla 223mm	White	3000K	>80Ra	3207lm	26.5W	121lm/W	Matt 90°	Ø 210mm
2.11.8814 / 2.11.8817*	Ocla 223mm	White	4000K	>80Ra	3273lm	26.5W	127lm/W	Matt 90°	Ø 210mm

*Article No. with * indicates DALI dimmable driver is included.

Ocla 183mm



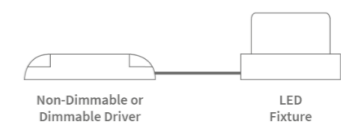
Ocla 223mm

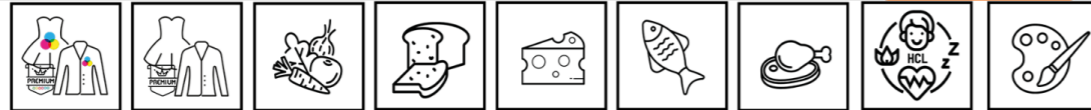


ALSO AVAILABLE

Description

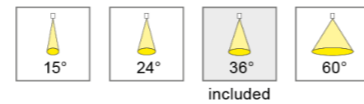
Casambi dimmable





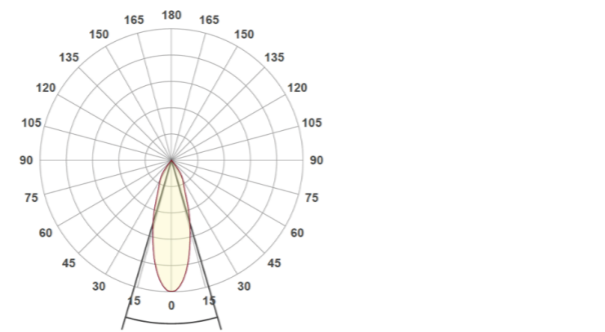
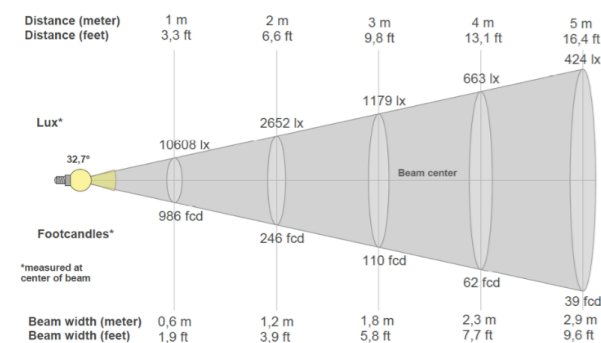
Lynx Maxi II

Round Turn/Tiltable



System Power	35W		47W	
CRI	>90Ra			
CCT	3000K	4000K PW	3000K	4000K PW
System Lumen	4200lm	4221lm	5793lm	5443lm
System Efficacy	120lm/W	121lm/W	123lm/W	116lm/W
LOR	Up to 80%			
Driver	Non-dimmable Driver (included)			
SDCM	2			
L-B values (50.000 hr)	L90B10 (50.000h)			

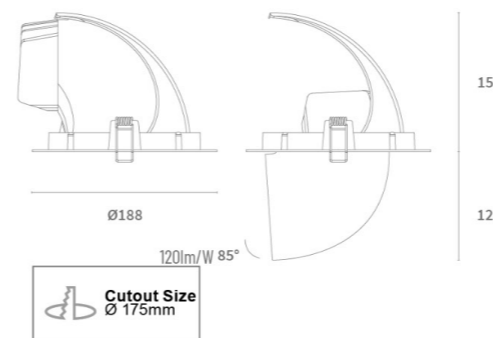
*More options available! Contact us to customize your fixture down to the finest details.



PRODUCT LIST

Article No.	Product Name	Color	CCT	CRI	System Lumen	System Power	System Efficacy	Reflector	Cutout size
2.11.5905	Lynx Maxi	White	3000K	>90Ra	4200lm	35W	120lm/W	36°	Ø 175mm
2.11.6389	Lynx Maxi	Black	4000K PW	>90Ra	4221lm	35W	121lm/W	36°	Ø 175mm
2.11.6405	Lynx Maxi	White	3000K	>90Ra	5793lm	47W	123lm/W	36°	Ø 175mm
2.11.5921	Lynx Maxi	Black	4000K PW	>90Ra	5443lm	47W	116lm/W	36°	Ø 175mm

Also available: CRI >80Ra
This is a small selection from our portfolio. Please contact us for a suitable solution for your lighting project.

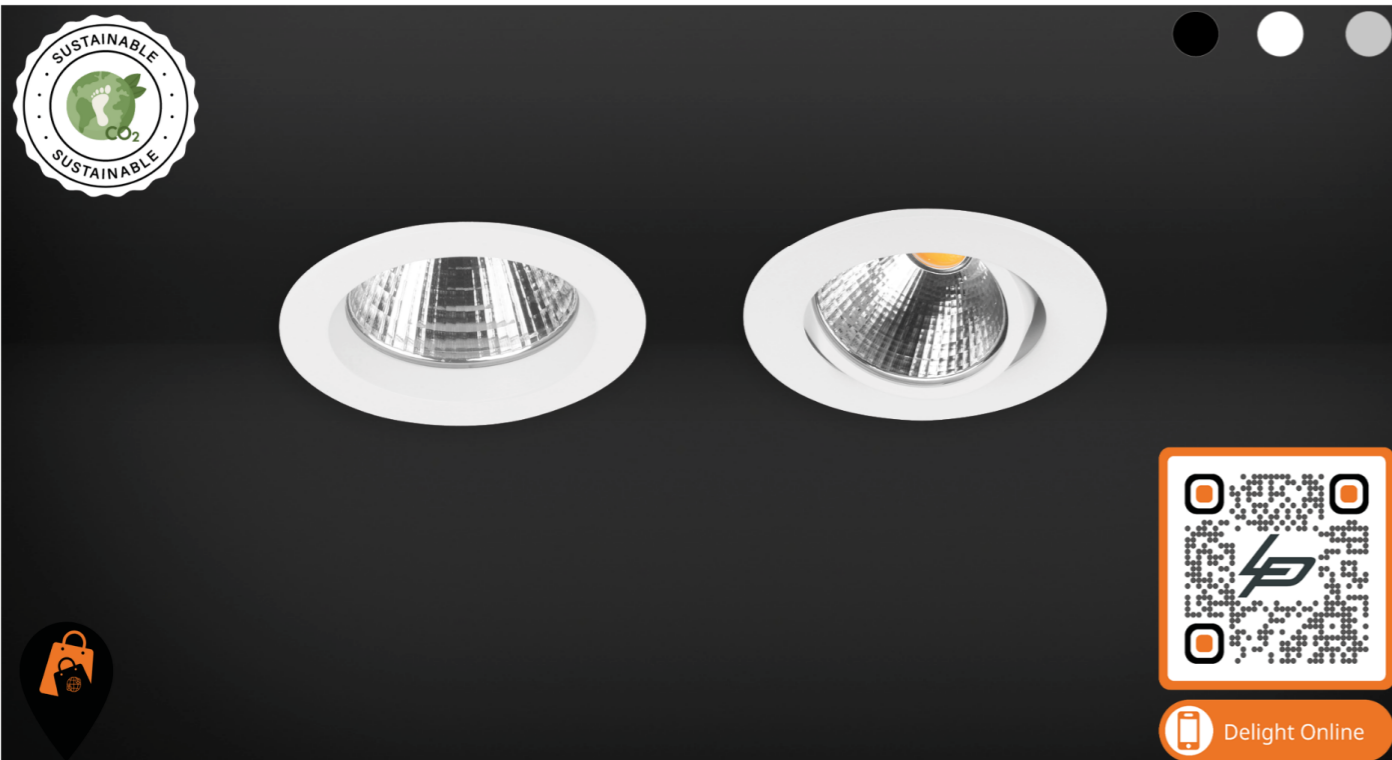


AVAILABLE BEAM ANGLES

Article No.	Description
5.14.0295	Reflector 15° for Lynx Maxi II
5.14.0296	Reflector 24° for Lynx Maxi II
5.14.0298	Reflector 60° for Lynx Maxi II

AVAILABLE DRIVERS

Article No.	Description
-----	Dimmable driver



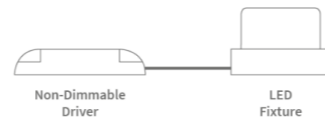
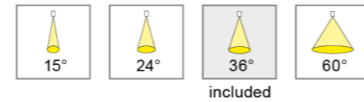
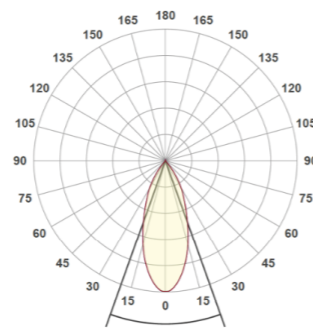
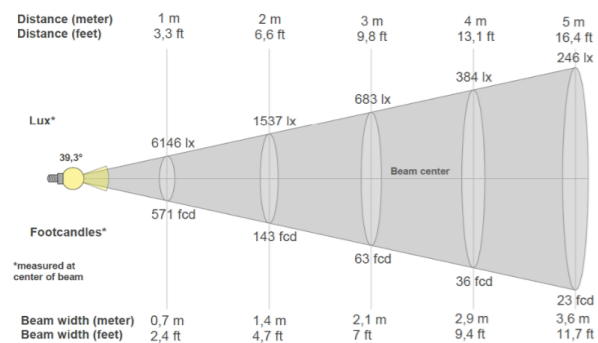
Flo

Round Fixed & Tiltable



System Power	19.5W	26W
CRI	>90Ra	
CCT	3000K	3000K
System Lumen	2340lm	3211lm
System Efficacy	120lm/W	124lm/W
LOR	Up to 85%	
Driver	Non-Dimmable Driver (included)	
SDCM	2	
L+B values (50.000 hr)	L90B10 (50.000h)	

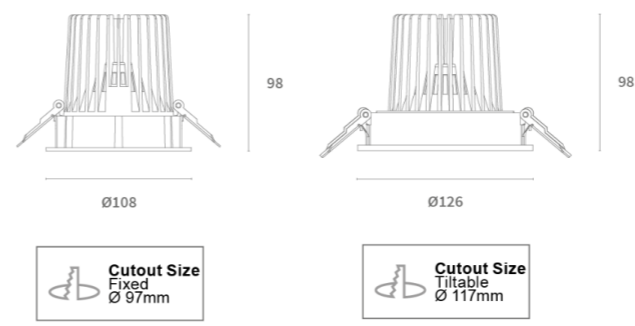
*More options available! Contact us to customize your fixture down to the finest details.



Article No.	Product Name	Color	CCT	CRI	System Lumen	System Power	System Efficacy	Reflector	Cutout size
2.11.1485	Flo Round Fixed	Grey	3000K	>90Ra	2340lm	19.5W	120lm/W	36°	Ø 97mm
2.11.1486	Flo Round Fixed	White	3000K	>90Ra	2340lm	19.5W	120lm/W	36°	Ø 97mm
2.11.1487	Flo Round Fixed	Black	3000K	>90Ra	2340lm	19.5W	120lm/W	36°	Ø 97mm
2.11.2563	Flo Round Fixed	Grey	3000K	>90Ra	3211lm	26W	124lm/W	36°	Ø 97mm
2.11.2329	Flo Round Fixed	White	3000K	>90Ra	3211lm	26W	124lm/W	36°	Ø 97mm
2.11.2564	Flo Round Fixed	Black	3000K	>90Ra	3211lm	26W	124lm/W	36°	Ø 97mm

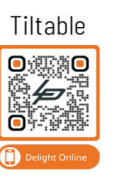
Article No.	Product Name	Color	CCT	CRI	System Lumen	System Power	System Efficacy	Reflector	Cutout size
2.11.1488	Flo Round Tilttable	Grey	3000K	>90Ra	2340lm	19.5W	120lm/W	36°	Ø 117mm
2.11.1489	Flo Round Tilttable	White	3000K	>90Ra	2340lm	19.5W	120lm/W	36°	Ø 117mm
2.11.1490	Flo Round Tilttable	Black	3000K	>90Ra	2340lm	19.5W	120lm/W	36°	Ø 117mm
2.11.1491	Flo Round Tilttable	Grey	3000K	>90Ra	3211lm	26W	124lm/W	36°	Ø 117mm
2.11.1492	Flo Round Tilttable	White	3000K	>90Ra	3211lm	26W	124lm/W	36°	Ø 117mm
2.11.1493	Flo Round Tilttable	Black	3000K	>90Ra	3211lm	26W	124lm/W	36°	Ø 117mm

Also available: CRI >80Ra
This is a small selection from our portfolio. Please contact us for a suitable solution for your lighting project.



Article No.	Description
5.14.0149	Reflector 15° for Downlight Flo
5.14.0150	Reflector 24° for Downlight Flo
5.14.0152	Reflector 60° for Downlight Flo

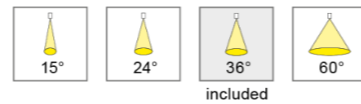
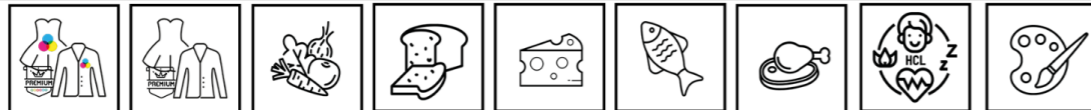
Article No.	Description
-----	Dimmable driver





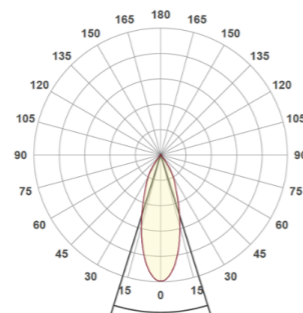
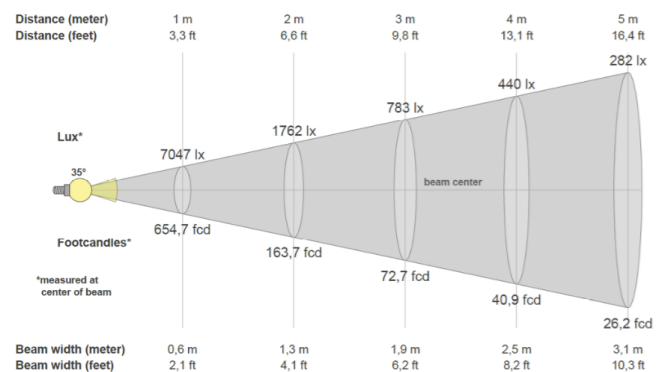
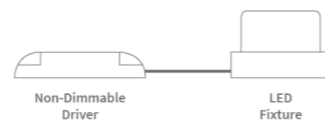
Exo

Round Cardan



System Power	19.5W		26W	
CRI	>90Ra			
CCT	2700K	3000K	2700K	3000K
System Lumen	2237lm	2340lm	3056lm	3211lm
System Efficacy	115lm/W	120lm/W	118lm/W	124lm/W
LOR	Up to 85%			
Driver	Non-Dimmable Driver (included)			
SDCM	2			
L+B values (50.000 hr)	L90B10 (50.000h)			

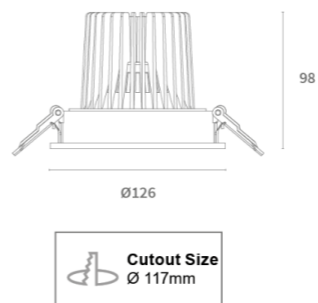
* Also available with other CCT's such as 3500K and 4000K
 More options available! Contact us to customize your fixture down to the finest details.



PRODUCT LIST

Article No.	Product Name	Color	CCT	CRI	System Lumen	System Power	System Efficacy	Reflector	Cutout size
2.11.8996	Exo Round Cardan	Grey	2700K	>90Ra	2237lm	19.5W	115lm/W	36°	Ø 117mm
2.11.9004	Exo Round Cardan	White	2700K	>90Ra	2237lm	19.5W	115lm/W	36°	Ø 117mm
2.11.3489	Exo Round Cardan	Black	2700K	>90Ra	2237lm	19.5W	115lm/W	36°	Ø 117mm
2.11.4176	Exo Round Cardan	Grey	3000K	>90Ra	2340lm	19.5W	120lm/W	36°	Ø 117mm
2.11.2110	Exo Round Cardan	White	3000K	>90Ra	2340lm	19.5W	120lm/W	36°	Ø 117mm
2.11.2113	Exo Round Cardan	Black	3000K	>90Ra	2340lm	19.5W	120lm/W	36°	Ø 117mm
2.11.3591	Exo Round Cardan	Grey	2700K	>90Ra	3056lm	26W	118lm/W	36°	Ø 117mm
2.11.3912	Exo Round Cardan	White	2700K	>90Ra	3056lm	26W	118lm/W	36°	Ø 117mm
2.11.8895	Exo Round Cardan	Black	2700K	>90Ra	3056lm	26W	118lm/W	36°	Ø 117mm
2.11.2558	Exo Round Cardan	Grey	3000K	>90Ra	3211lm	26W	124lm/W	36°	Ø 117mm
2.11.2151	Exo Round Cardan	White	3000K	>90Ra	3211lm	26W	124lm/W	36°	Ø 117mm
2.11.2115	Exo Round Cardan	Black	3000K	>90Ra	3211lm	26W	124lm/W	36°	Ø 117mm

Also available: CRI >80Ra
 This is a small selection from our portfolio. Please contact us for a suitable solution for your lighting project.

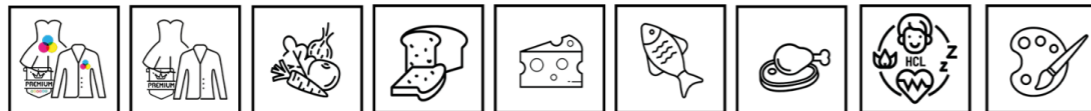
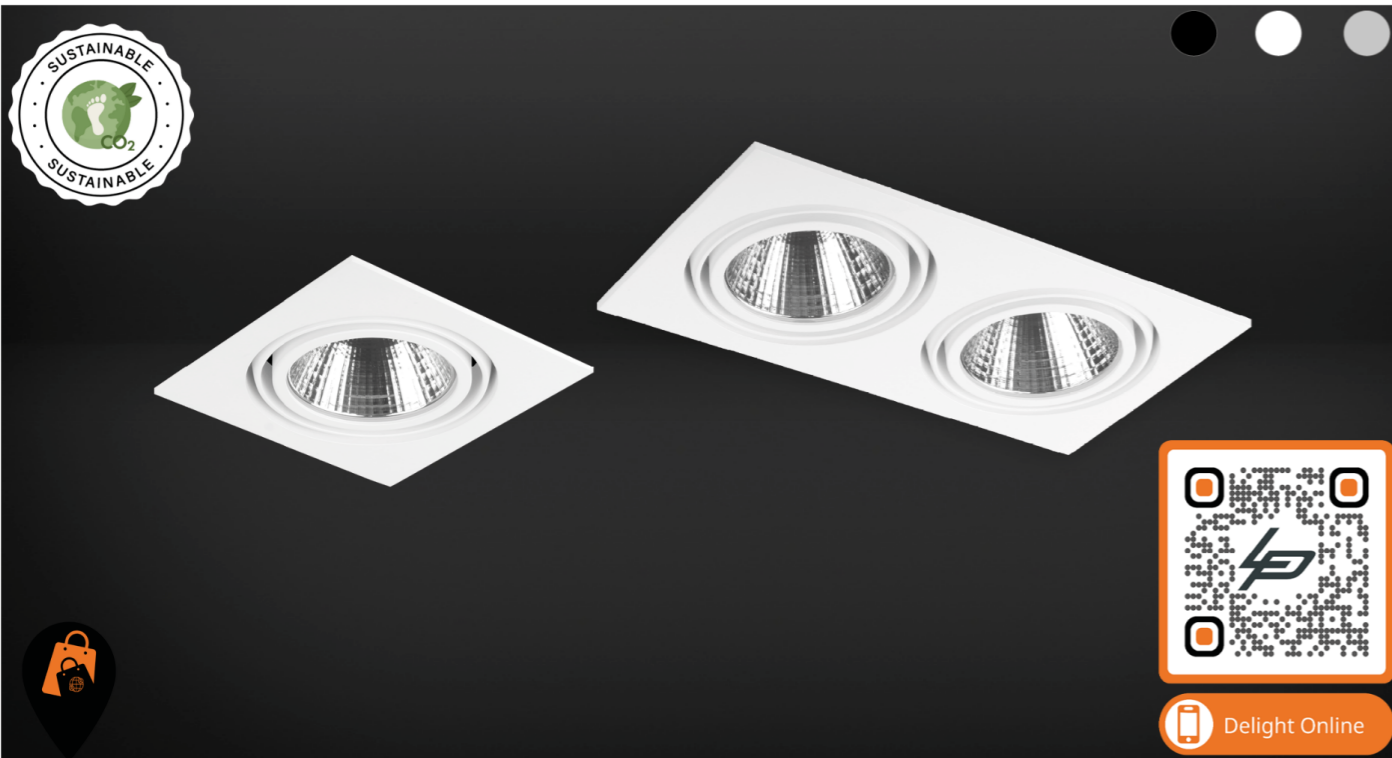


AVAILABLE BEAM ANGLES

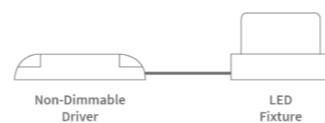
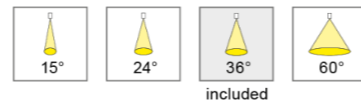
Article No.	Description
5.14.0149	Reflector 15° for Exo
5.14.0150	Reflector 24° for Exo
5.14.0152	Reflector 60° for Exo
2.01.0973	Honeycomb Louvre for Exo

AVAILABLE DRIVERS

Article No.	Description
-----	Dimmable driver

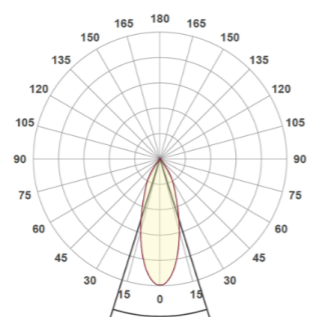
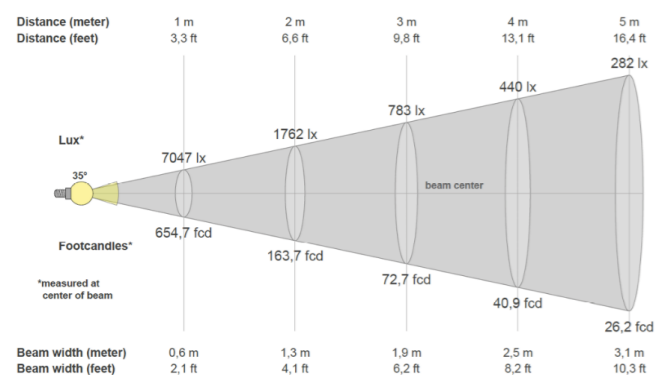


Exo Square Cardan 1 & 2-light



System Power	19.5W		26W	
CRI	>90Ra			
CCT	2700K	3000K	2700K	3000K
System Lumen	2237lm	2340lm	3053lm	3211lm
System Efficacy	115lm/W	120m/W	118lm/W	124lm/W
LOR	Up to 85%			
Driver	Non-Dimmable Driver (included)			
SDCM	2			
L+B values (50,000 hr)	L90B10 (50,000h)			

* Also available with other CCT's such as 3500K and 4000K
More options available! Contact us to customize your fixture down to the finest details.



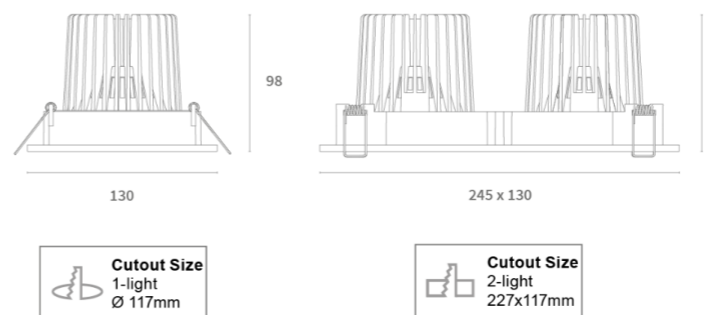
PRODUCT LIST

Article No.	Product Name	Color	CCT	CRI	System Lumen	System Power	System Efficacy	Reflector	Cutout size
2.11.4178	Exo Square Tilttable 1-light	Grey	3000K	>90Ra	2340lm	19.5W	120m/W	36°	Ø 117mm
2.11.2122	Exo Square Tilttable 1-light	White	3000K	>90Ra	2340lm	19.5W	120m/W	36°	Ø 117mm
2.11.4179	Exo Square Tilttable 1-light	Black	3000K	>90Ra	2340lm	19.5W	120m/W	36°	Ø 117mm
2.11.2559	Exo Square Tilttable 1-light	Grey	3000K	>90Ra	3211lm	26W	124lm/W	36°	Ø 117mm
2.11.1606	Exo Square Tilttable 1-light	White	3000K	>90Ra	3211lm	26W	124lm/W	36°	Ø 117mm
2.11.2560	Exo Square Tilttable 1-light	Black	3000K	>90Ra	3211lm	26W	124lm/W	36°	Ø 117mm

PRODUCT LIST

Article No.	Product Name	Color	CCT	CRI	System Lumen	System Power	System Efficacy	Reflector	Cutout size
2.11.4180	Exo Square Tilttable 2-light	Grey	3000K	>90Ra	2 x 2340lm	2 x 19.5W	2x 120m/W	36°	227 x 117mm
2.11.2118	Exo Square Tilttable 2-light	White	3000K	>90Ra	2 x 2340lm	2 x 19.5W	2x 120m/W	36°	227 x 117mm
2.11.4181	Exo Square Tilttable 2-light	Black	3000K	>90Ra	2 x 2340lm	2 x 19.5W	2x 120m/W	36°	227 x 117mm
2.11.2561	Exo Square Tilttable 2-light	Grey	3000K	>90Ra	2 x 3211lm	2 x 26W	2x 124lm/W	36°	227 x 117mm
2.11.2064	Exo Square Tilttable 2-light	White	3000K	>90Ra	2 x 3211lm	2 x 26W	2x 124lm/W	36°	227 x 117mm
2.11.2562	Exo Square Tilttable 2-light	Black	3000K	>90Ra	2 x 3211lm	2 x 26W	2x 124lm/W	36°	227 x 117mm

Also available: CRI >80Ra
This is a small selection from our portfolio. Please contact us for a suitable solution for your lighting project.



Delight Online

1-light

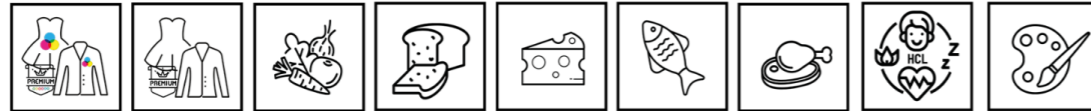


AVAILABLE BEAM ANGLES

Article No.	Description
5.14.0149	Reflector 15° for Exo
5.14.0150	Reflector 24° for Exo
5.14.0152	Reflector 60° for Exo
2.01.0973	Honeycomb Louvre for Exo

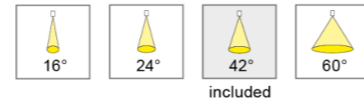
AVAILABLE DRIVERS

Article No.	Description
-----	Dimmable driver

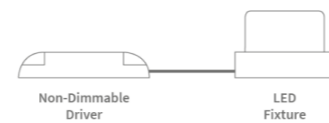


Movimento V2

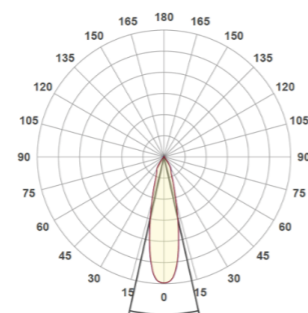
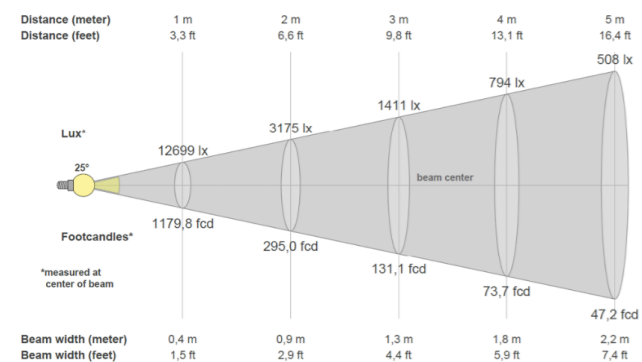
Cardan



System Power	27W	40W
CRI	>90Ra	
CCT	3000K	
System Lumen	3964lm	5482lm
System Efficacy	147lm/W	137lm/W
LOR	Up to 85%	
Driver	Non-Dimmable Driver	
SDCM	2	
L*B values (50.000 hr)	L90B10 (50.000h)	



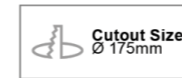
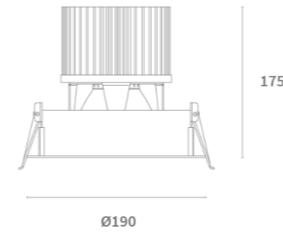
* Also available with other CCT's such as 3500K and 4000K
 * More options available! Contact us to customize your fixture down to the finest details.



PRODUCT LIST

Article No.	Product Name	Color	CCT	CRI	System Lumen	System Power	System Efficacy	Reflector	Cutout size
2.11.8997	Movimento V2	White	3000K	>90Ra	3964lm	27W	147lm/W	24°	Ø 175mm
2.11.8998	Movimento V2	Black	3000K	>90Ra	3964lm	27W	147lm/W	24°	Ø 175mm
2.11.8334	Movimento V2	White	3000K	>90Ra	5482lm	40W	137lm/W	24°	Ø 175mm
2.11.9001	Movimento V2	Black	3000K	>90Ra	5482lm	40W	137lm/W	24°	Ø 175mm
2.11.8999	Movimento V2	White	3000K	>90Ra	3972lm	27W	147lm/W	42°	Ø 175mm
2.11.9000	Movimento V2	Black	3000K	>90Ra	3972lm	27W	147lm/W	42°	Ø 175mm
2.11.8466	Movimento V2	White	3000K	>90Ra	4715lm	40W	117lm/W	42°	Ø 175mm
2.11.9002	Movimento V2	Black	3000K	>90Ra	4715lm	40W	117lm/W	42°	Ø 175mm

Also available: CRI >80Ra
 This is a small selection from our portfolio. Please contact us for a suitable solution for your lighting project.



AVAILABLE BEAM ANGLES

Article No.	Description
5.14.0128	Reflector 16° for Movimento
5.14.0130	Reflector 24° for Movimento
5.14.0223	Reflector 60° for Movimento

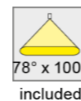
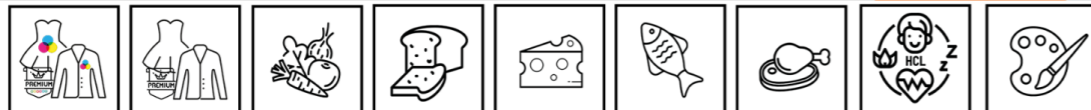
AVAILABLE DRIVERS

Article No.	Description
-----	Dimmable driver



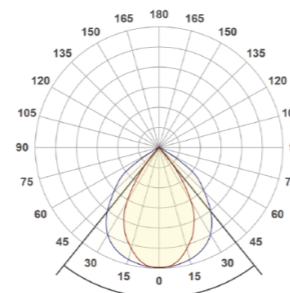
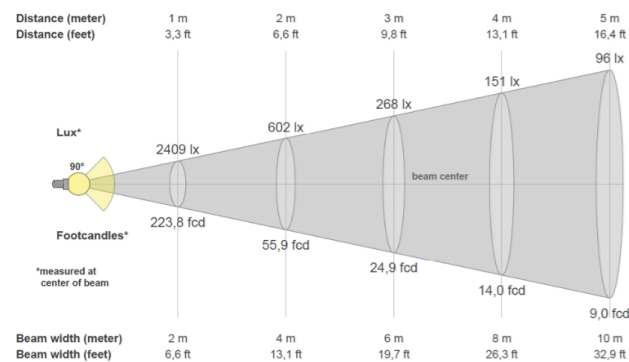
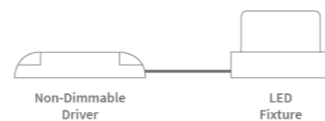
Wally Medium

Wallwasher
Tilttable



System Power	27.5W		
CRI	>90Ra		
CCT	2700K	3000K	3000K PW
System Lumen	3312lm	3471lm	3452lm
System Efficacy	120lm/W	133lm/W	126lm/W
Driver	Non-Dimmable Driver (included)		
SDCM	2		
L+B values (50,000 hr)	L90B10 (50,000h)		

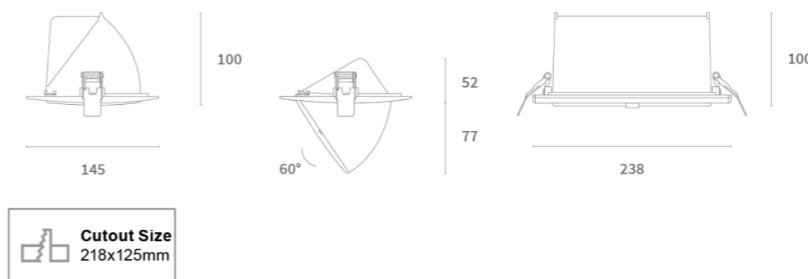
*More options available! Contact us to customize your fixture down to the finest details.



PRODUCT LIST

Article No.	Product Name	Color	CCT	CRI	System Lumen	System Power	System Efficacy	Reflector	Cutout size
2.11.2255	Wally Medium	Grey	2700K	>90Ra	3312lm	27.5W	120lm/W	78° x 100°	218 x 125mm
2.11.2999	Wally Medium	White	2700K	>90Ra	3312lm	27.5W	120lm/W	78° x 100°	218 x 125mm
2.11.2217	Wally Medium	Grey	3000K	>90Ra	3471lm	27.5W	133lm/W	78° x 100°	218 x 125mm
2.11.2219	Wally Medium	White	3000K	>90Ra	3471lm	27.5W	133lm/W	78° x 100°	218 x 125mm
2.11.9161	Wally Medium	Grey	3000K PW	>90Ra	3452lm	27.5W	126lm/W	78° x 100°	218 x 125mm
2.11.8205	Wally Medium	White	3000K PW	>90Ra	3452lm	27.5W	126lm/W	78° x 100°	218 x 125mm

Also available: CRI >80Ra
This is a small selection from our portfolio. Please contact us for a suitable solution for your lighting project.



Cutout Size
218x125mm



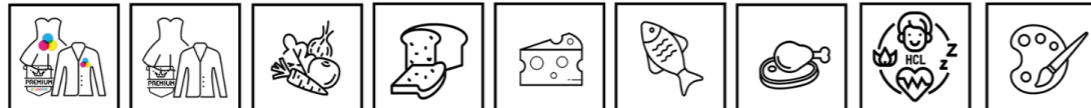
AVAILABLE DRIVERS

Article No.	Description
-----	DALI Dimmable Driver
-----	1-10V Dimmable Driver

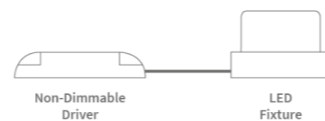


Wally Maxi

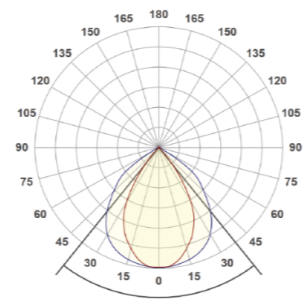
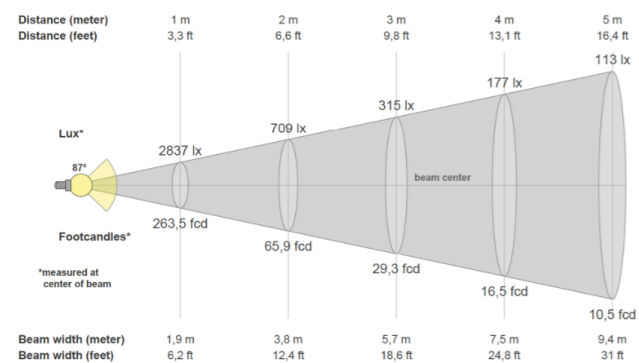
Wallwasher
Tilttable



System Power	44.5W	
CRI	>90Ra	
CCT	2700K	3000K
System Lumen	5567lm	5803lm
System Efficacy	125lm/W	130lm/W
Driver	Non-Dimmable Driver (included)	
SDCM	2	
L+B values (50,000 hr)	L90B10 (50,000h)	



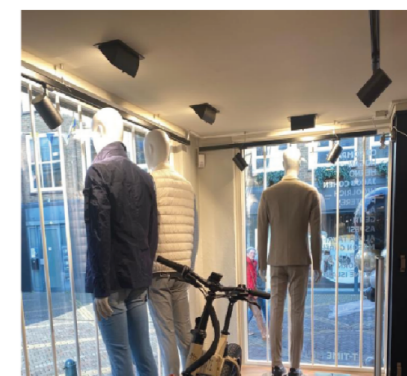
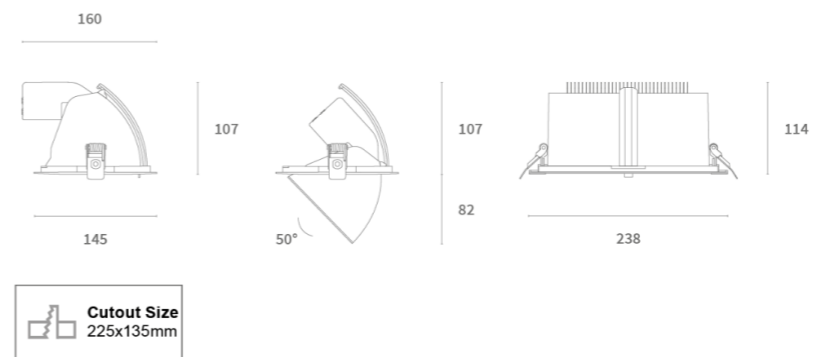
*More options available! Contact us to customize your fixture down to the finest details.



PRODUCT LIST

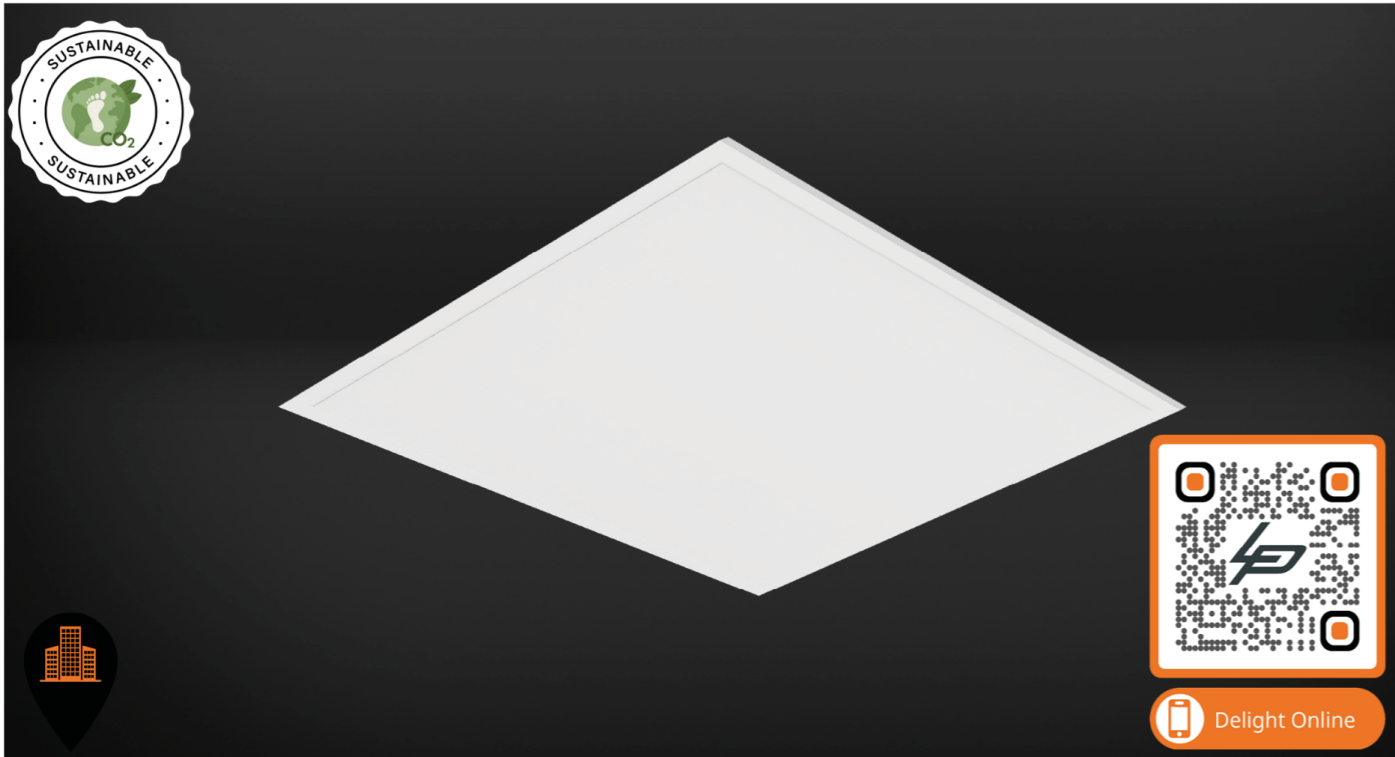
Article No.	Product Name	Color	CCT	CRI	System Lumen	System Power	System Efficacy	Reflector	Cutout size
2.11.2953	Wally Maxi	Grey	2700K	>90Ra	5482lm	44.5W	123lm/W	78° x 100°	225 x 135mm
2.11.3601	Wally Maxi	White	2700K	>90Ra	5482lm	44.5W	123lm/W	78° x 100°	225 x 135mm
2.11.4185	Wally Maxi	Black	2700K	>90Ra	5482lm	44.5W	123lm/W	78° x 100°	225 x 135mm
2.11.4186	Wally Maxi	Grey	3000K	>90Ra	5748lm	44.5W	129lm/W	78° x 100°	225 x 135mm
2.11.3414	Wally Maxi	White	3000K	>90Ra	5748lm	44.5W	129lm/W	78° x 100°	225 x 135mm
2.11.9109	Wally Maxi	Black	3000K	>90Ra	5748lm	44.5W	129lm/W	78° x 100°	225 x 135mm
2.11.9096	Wally Maxi	Grey	3000K PW	>90Ra	5807lm	44.5W	131lm/W	78° x 100°	225 x 135mm
2.11.6546	Wally Maxi	White	3000K PW	>90Ra	5807lm	44.5W	131lm/W	78° x 100°	225 x 135mm
2.11.6601	Wally Maxi	Black	3000K PW	>90Ra	5807lm	44.5W	131lm/W	78° x 100°	225 x 135mm
2.11.9097	Wally Maxi	Grey	4000K PW	>90Ra	6162lm	44.5W	138lm/W	78° x 100°	225 x 135mm
2.11.3471	Wally Maxi	White	4000K PW	>90Ra	6162lm	44.5W	138lm/W	78° x 100°	225 x 135mm
2.11.9098	Wally Maxi	Black	4000K PW	>90Ra	6162lm	44.5W	138lm/W	78° x 100°	225 x 135mm

Also available: CRI >90Ra
This is a small selection from our portfolio. Please contact us for a suitable solution for your lighting project.



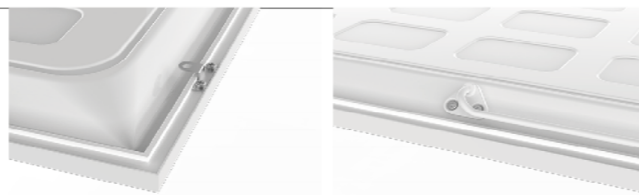
AVAILABLE DRIVERS

Article No.	Description
-----	DALI Dimmable Driver
-----	1-10V Dimmable Driver



Plata

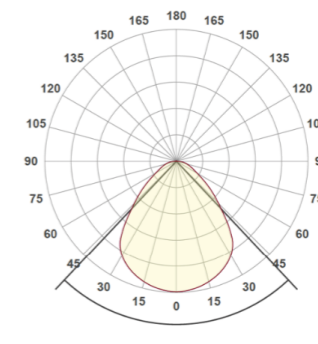
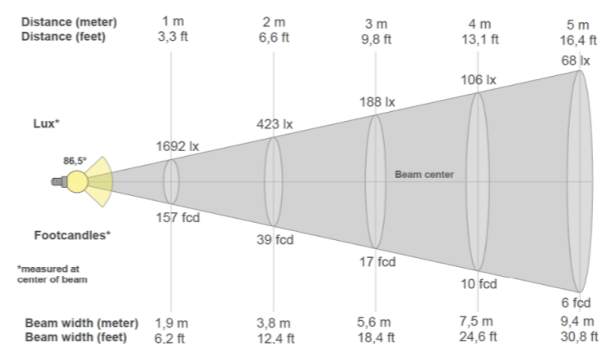
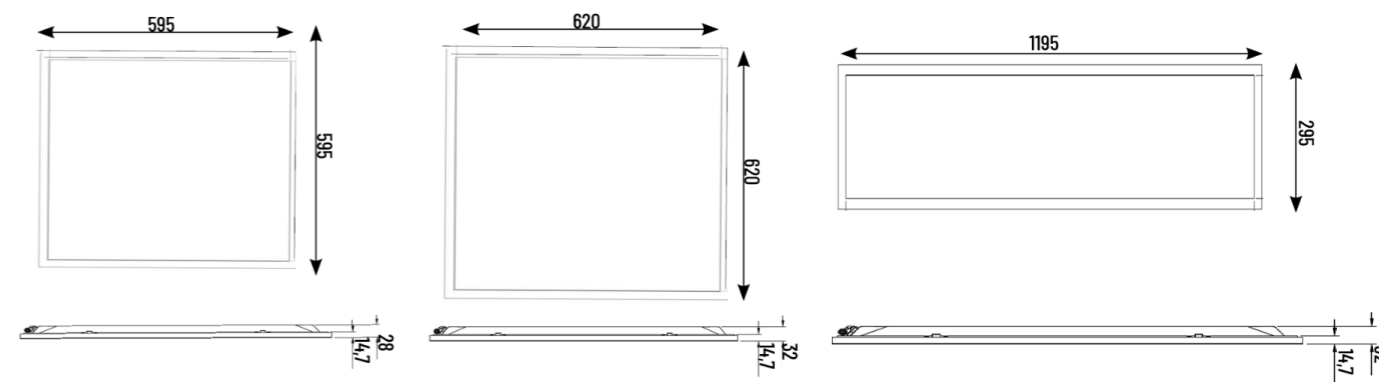
Recessed Panel with dipswitch
LED



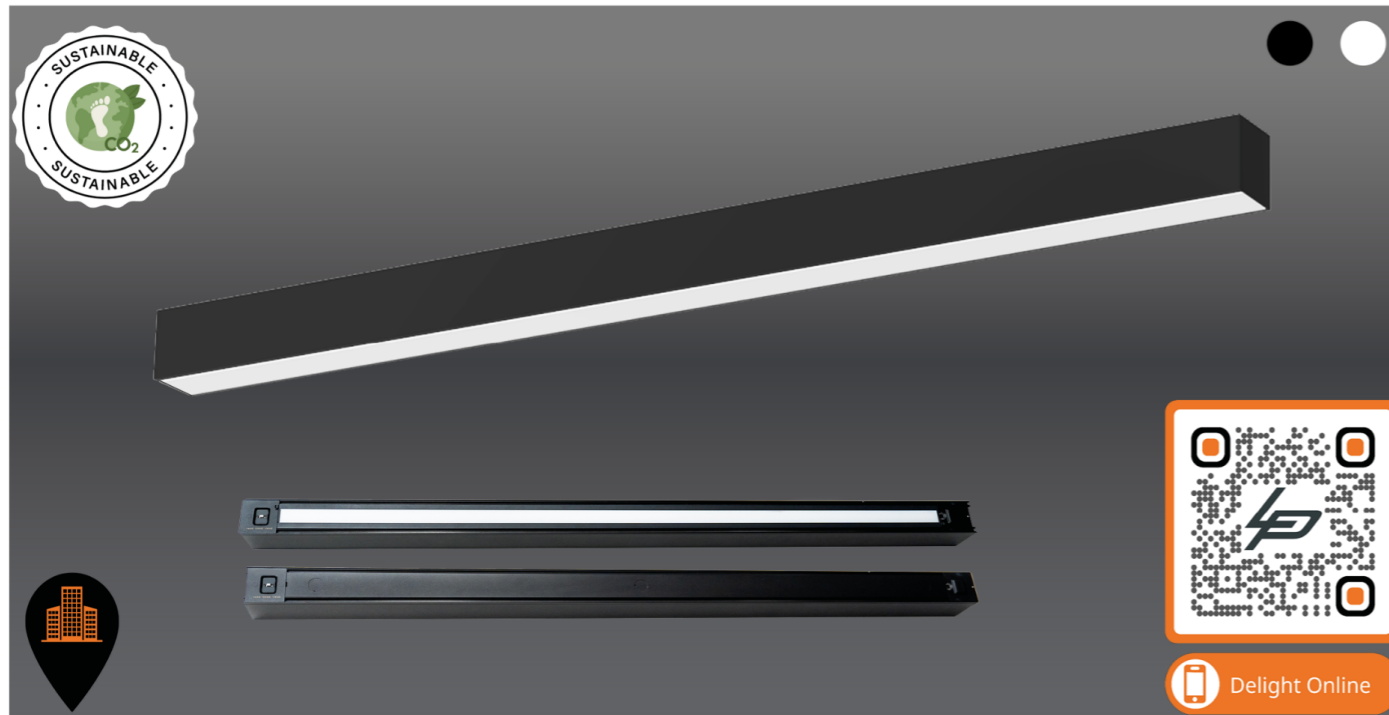
Size	595 x 595			620 x 620			1195x295mm		
CRI	>90Ra								
CCT	3000K	3500K	4000K	3000K	3500K	4000K	3000K	3500K	4000K
System Power	29,9W	29,2W	29,8W	29,9W	29,2W	29,8W	29,9W	29,2W	29,8W
System Lumen (800mA)	3624lm	3806lm	3836lm	3624lm	3806lm	3836lm	3624lm	3806lm	3836lm
System Efficacy (800mA)	121lm/W	131lm/W	129lm/W	121lm/W	131lm/W	129lm/W	121lm/W	131lm/W	129lm/W
System Power	34,4W	33,6W	34,3W	34,4W	33,6W	34,3W	34,4W	33,6W	34,3W
System Lumen (900mA)	4058lm	4274lm	4269lm	4058lm	4274lm	4269lm	4058lm	4274lm	4269lm
System Efficacy (900mA)	118lm/W	127lm/W	124lm/W	118lm/W	127lm/W	124lm/W	118lm/W	127lm/W	124lm/W
System Power	40,4W	38,4W	39,7W	40,4W	38,4W	39,7W	40,4W	38,4W	39,7W
System Lumen (1050mA)	4615lm	4865lm	4835lm	4615lm	4865lm	4835lm	4615lm	4865lm	4835lm
System Efficacy (1050mA)	114lm/W	127lm/W	122lm/W	114lm/W	127lm/W	122lm/W	114lm/W	127lm/W	122lm/W
L•B values (50.000 hr)	L80B10 (50.000h)								

*More options available! Contact us to customize your fixture down to the finest details.

PRODUCT LIST								
Article No.	Product Name	Color	CCT (dipswitch)	CRI	System Lumen	System Power	System Efficacy	Size
2.11.9093	LED Panel Plata	White	3000K/3500K/4000K	>90Ra	up to 4865lm	up to 40,4W	up to 131lm/W	595x595mm
2.11.9094	LED Panel Plata	White	3000K/3500K/4000K	>90Ra	up to 4865lm	up to 40,4W	up to 131lm/W	620x620mm
2.11.9095	LED Panel Plata	White	3000K/3500K/4000K	>90Ra	up to 4865lm	up to 40,4W	up to 131lm/W	1195x295mm



PRODUCT LIST			
Article No.	Product Name	Output Current	Maximum Driver Power
3.10.0947	LED DriverCC Talexx LC 700mA for DALI ² dimmable	700mA	45W
3.10.0948	LED DriverCC Talexx LC 900mA for DALI ² dimmable	900mA	45W
3.10.0949	LED DriverCC Talexx LC 1050mA for DALI ² dimmable	1050mA	45W
3.10.0974	LED Driver CC FIT 40W 700/800/900/1050mA 23-42V with DIP-switch	700/800/900/1050mA	40W
3.10.0975	Driver CC Professionale 38W 300-1050mA Casambi	300-1050mA	38W



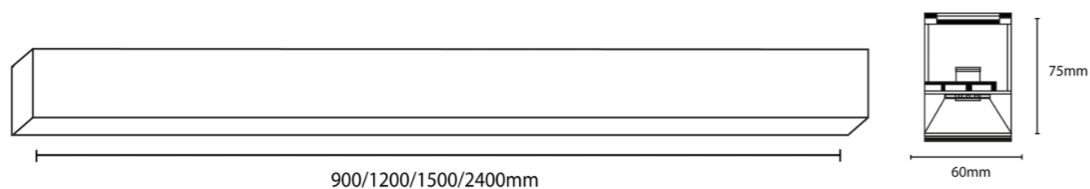
LUCIO

Direct and indirect linear solution with dipswitch for output and CCT, available as surface or pendant fixture

PRODUCT LIST								
Article No.	Product Name	Color	CCT (dipswitch)	CRI	System Lumen (3500K)	System Power	Size	
2.06.1007	Lucio	Black	3000K/3500K/4000K	DALI	>90Ra	121lm/W	Max. 30W	900mm
2.06.1008	Lucio	White	3000K/3500K/4000K	DALI	>90Ra	121lm/W	Max. 30W	900mm
2.06.1009	Lucio	Black	3000K/3500K/4000K	DALI	>90Ra	119lm/W	Max. 40W	1200mm
2.06.1010	Lucio	White	3000K/3500K/4000K	DALI	>90Ra	119lm/W	Max. 40W	1200mm
2.06.1011	Lucio	Black	3000K/3500K/4000K	DALI	>90Ra	117lm/W	Max. 50W	1500mm
2.06.1012	Lucio	White	3000K/3500K/4000K	DALI	>90Ra	117lm/W	Max. 50W	1500mm
2.06.1013	Lucio	Black	3000K/3500K/4000K	DALI	>90Ra	119lm/W	Max. 80W	2400mm
2.06.1014	Lucio	White	3000K/3500K/4000K	DALI	>90Ra	119lm/W	Max. 80W	2400mm

ADDITIONAL UPLIGHT					
Article No.	Product Name	Color	CCT (dipswitch)	CRI	For size
2.06.1015	Lucio uplight	Black	3000K/3500K/4000K	>90Ra	900mm
2.06.1016	Lucio uplight	Black	3000K/3500K/4000K	>90Ra	1200mm
2.06.1017	Lucio uplight	Black	3000K/3500K/4000K	>90Ra	1500mm
2.06.1018	Lucio uplight	Black	3000K/3500K/4000K	>90Ra	2400mm

ACCESSORIES		
Article No.	Product Name	size/piece
2.06.1020	Suspension Set Black	2 meter
2.06.1021	Suspension Set White	2 meter
2.06.1022	Straight connection	1 piece
2.06.1019	Lucio opal diffuser rol opal	Rol 15000mm



LUCIO STANDAARD DALI 2 DIMBAAR

UP LIGHT OPTIE

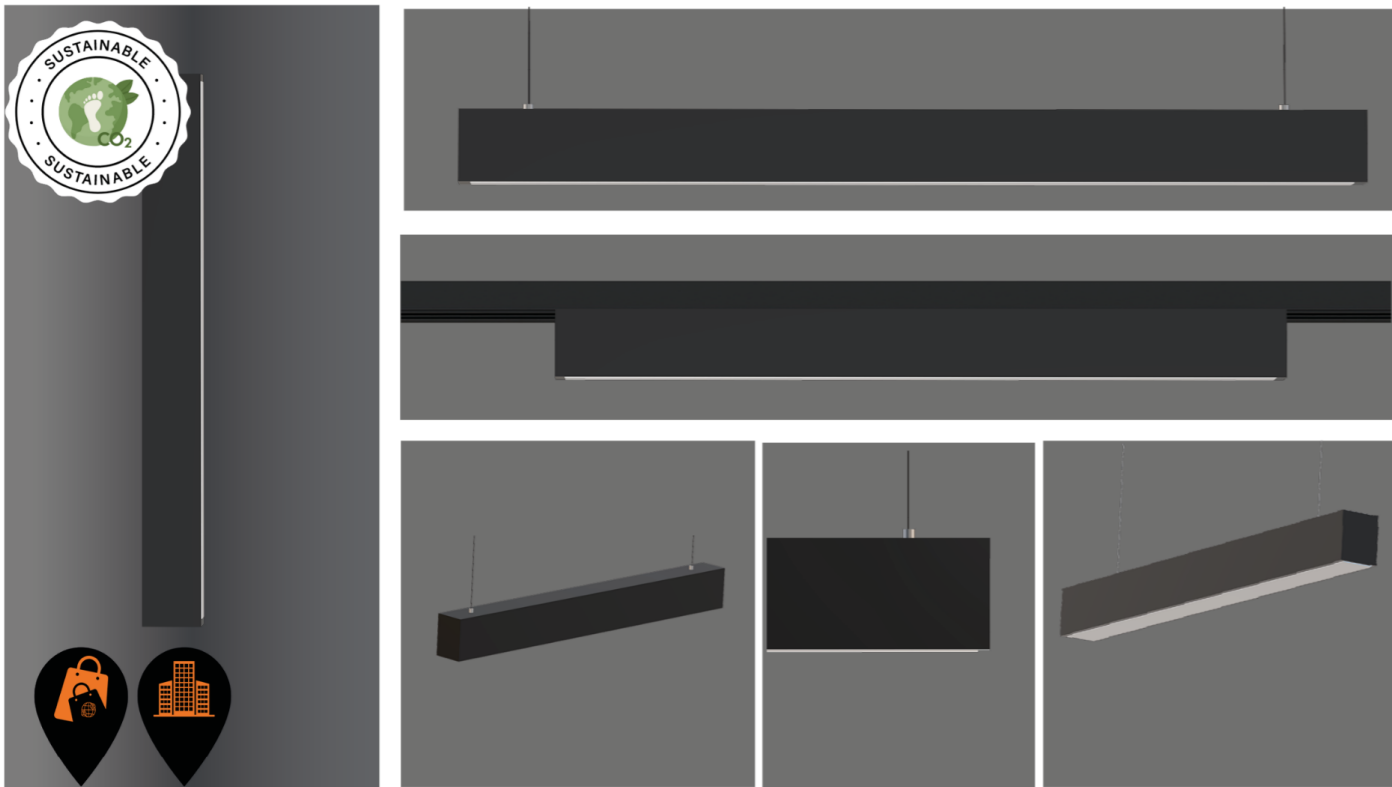
De blinde plaat van de Lucio wordt standaard bij het armatuur geleverd. Deze kan naar wens eenvoudig met één klik worden verwisseld met de uplight. De uplight zorgt voor indirect licht aan de bovenkant van het armatuur en is ook verkrijgbaar in zwart voor alle maten. In de uplight-variant wordt de lichtopbrengst van de Lucio verdeeld, waarbij 70% direct licht aan de onderkant is en 30% voor de uplight. De lichtkleur van de uplight komt overeen met die van het directe licht.

ENERGIE-EFFICIËNT TOT 121 LM/W

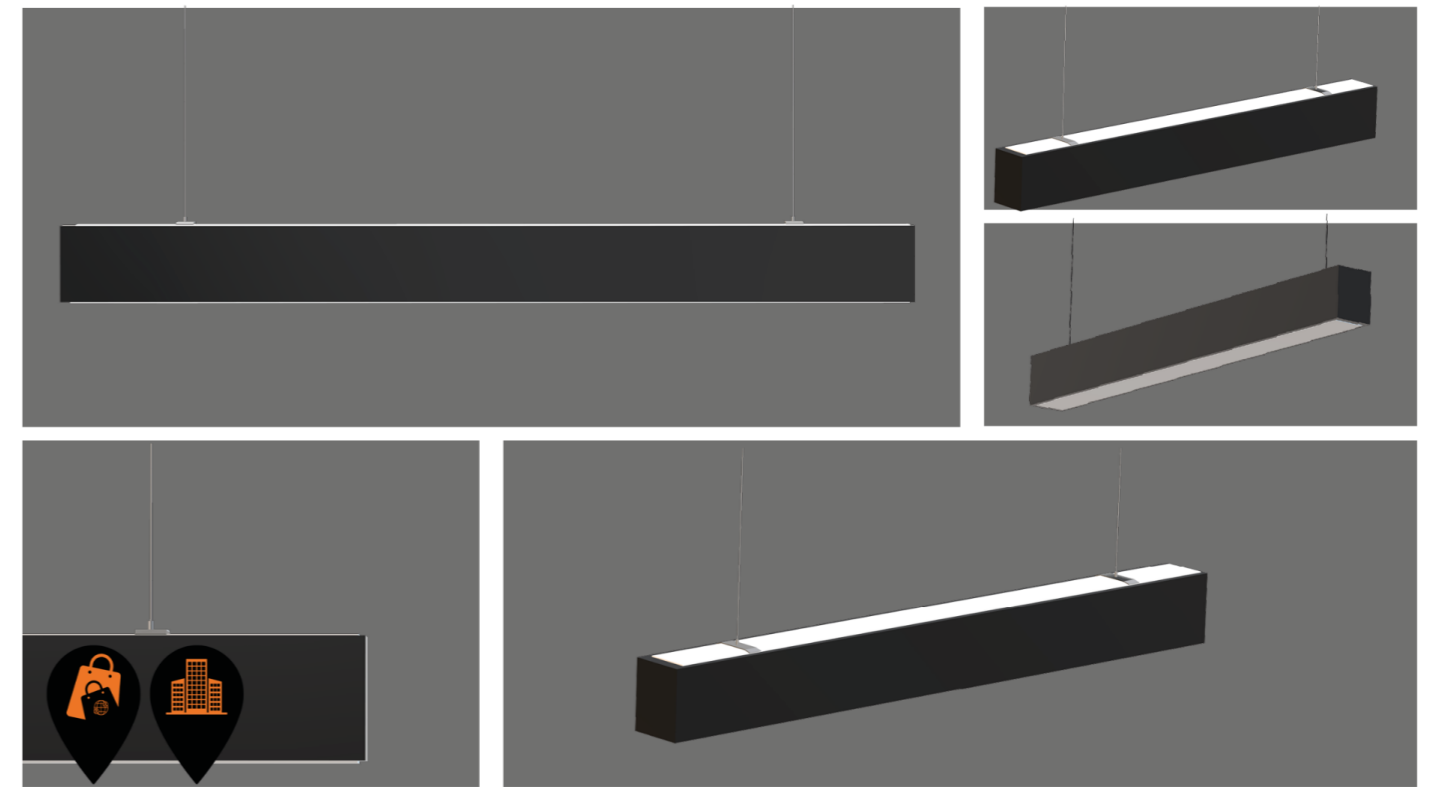
MEERDERE LUCIOS VERBINDEN

Verbind meerdere Lucio armaturen met onze speciale verbindingsstukken en creëer een naadloos ontwerp. Met de optie om een rol van 15 meter opalen afwerking toe te voegen, maak je van je ontwerp een esthetisch geheel.





XLH 
Single light profile
Pendant, Surface & Tracklight available



XLH UP/DOWN 
Double light profile
Pendant & Tracklight available



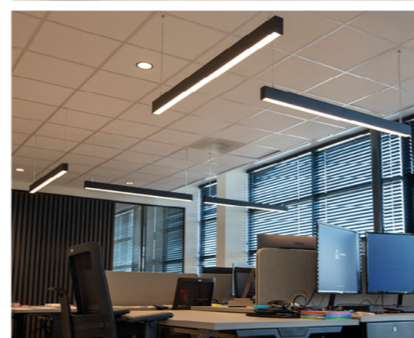
Modern and modular.

Je herkent dit misschien als het Alupro LED profiel, of je kent het als een compleet armatuur. Ons uitgebreide LED profiel en volledig ontwikkelde, gestandaardiseerde, maar toch aanpasbare XLH en XLH up-down armaturen. Deze zijn zorgvuldig samengesteld met behulp van onze Alupro LED profielen en kunnen tot in de kleinste details worden gepersonaliseerd om perfect te voldoen aan de behoeften van elk project.

De XLH en XLH up-down armaturen zijn indrukwekkend veelzijdige oplossingen. Dankzij hun gestandaardiseerde maar toch aanpasbare ontwerp kunnen ze worden aangepast aan een breed scala aan vereisten. De hele armatuur wordt samengesteld uit verschillende onderdelen in onze montageafdeling. Dit prachtige moderne ontwerp wordt vaak gekozen voor gebruik in kantoor- en winkelprojecten. De XLH kan gebruikt worden als pendel-, rail- of opbouwarmatuur en is verkrijgbaar in de maten 0,9 m, 1,2 m en 1,5 meter. De XLH en XLH up down hebben een gespecialiseerde lineaire LED-module die een CRI van 90 kan bereiken in lichtkleuren zoals 3000K, 3500K en 4000K. De Bioup optie biedt 4200K of Bioup + Tunable White met een CRI van 80.

Beide armaturen kunnen worden uitgerust met Casambi voor meer comfort en controle. Bovendien kunnen ze via hun LED-module worden uitgerust met een Tunable White en Bioup module, waardoor hoogwaardige mensgerichte verlichting voor kantoren ontstaat. Deze verlichting volgt het biodynamische ritme en kan in combinatie met Bioup zelfs de productie van het gelukshormoon stimuleren.

Voor de XLH en XLH up-down modellen kun je kiezen tussen een standaard opalen afwerking of een microprisma-afdekking. Als je besluit om de XLH of XLH up-down uit te rusten met Casambi, kun je ook externe sensoren inbouwen om de veiligheid en efficiëntie te verbeteren, vooral in gemeenschappelijke ruimten.



Available configurations for XLH & XLH up/down


LENGHT	0,9m	1,2m	1,5m		
COLOUR	White	Black	Aluminium		
CCT	3000K	3500K	4000K	BioUp+Tunable White	BioUp 4200K
DRIVER	35W 60W On/Off Driver	35W 60W DALI	36W 75W DALI flexitone	CASAMBI 35W 60W Casambi	
COVER	Microprismatic (UGR <19)	Opal (UGR <22)			
CABLE 1M / 2M	White	Black	Transparent	Transparent Dali	
ENDCAP	White	Black	Aluminium		

Contact us for more info!



 Delight Online



 Contact us!



Slim verlicht met XLH

Het Sluishuis in Amsterdam, dit iconische utiliteitsproject bevindt zich in de buurt van de A10-snelweg en siert het IJmeer met zijn ontwerp.

De trappenhuisen in het Sluishuis zijn voorzien van Lumiparts XLH led-armaturen. Deze zijn uitgerust met efficiënte bewegingssensoren, zodat de verlichting haar werk doet wanneer bezoekers de trappenhal betreden.

Dit project werd gerealiseerd dankzij de inzet van Hans Nieuwenhuizen van Haluci b.v. en Etb Cas Sombroek.

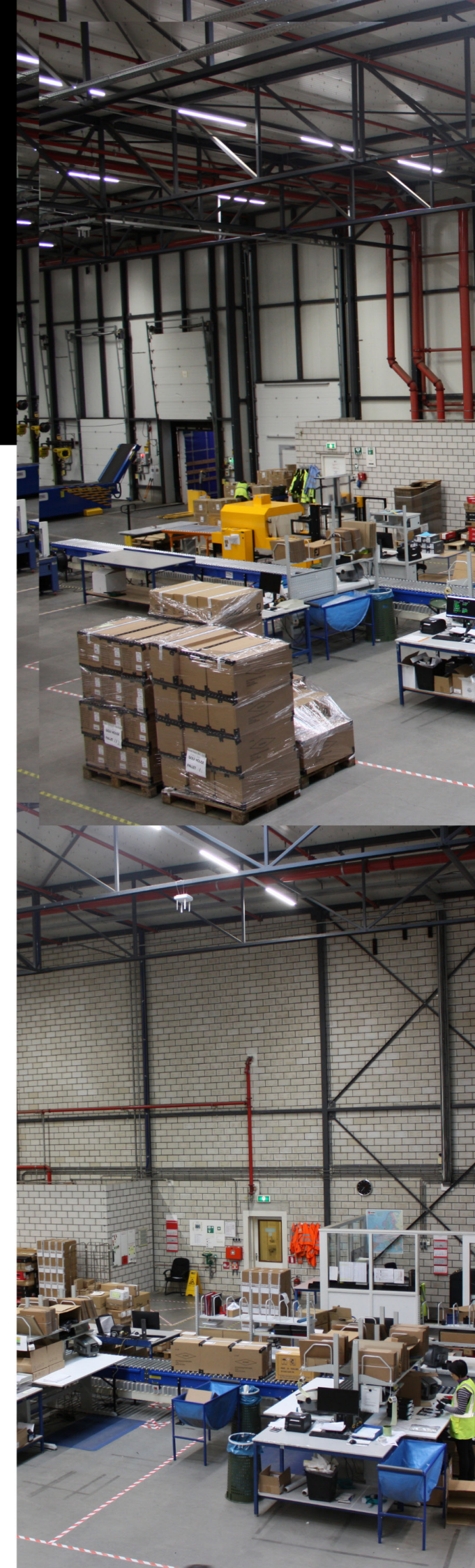


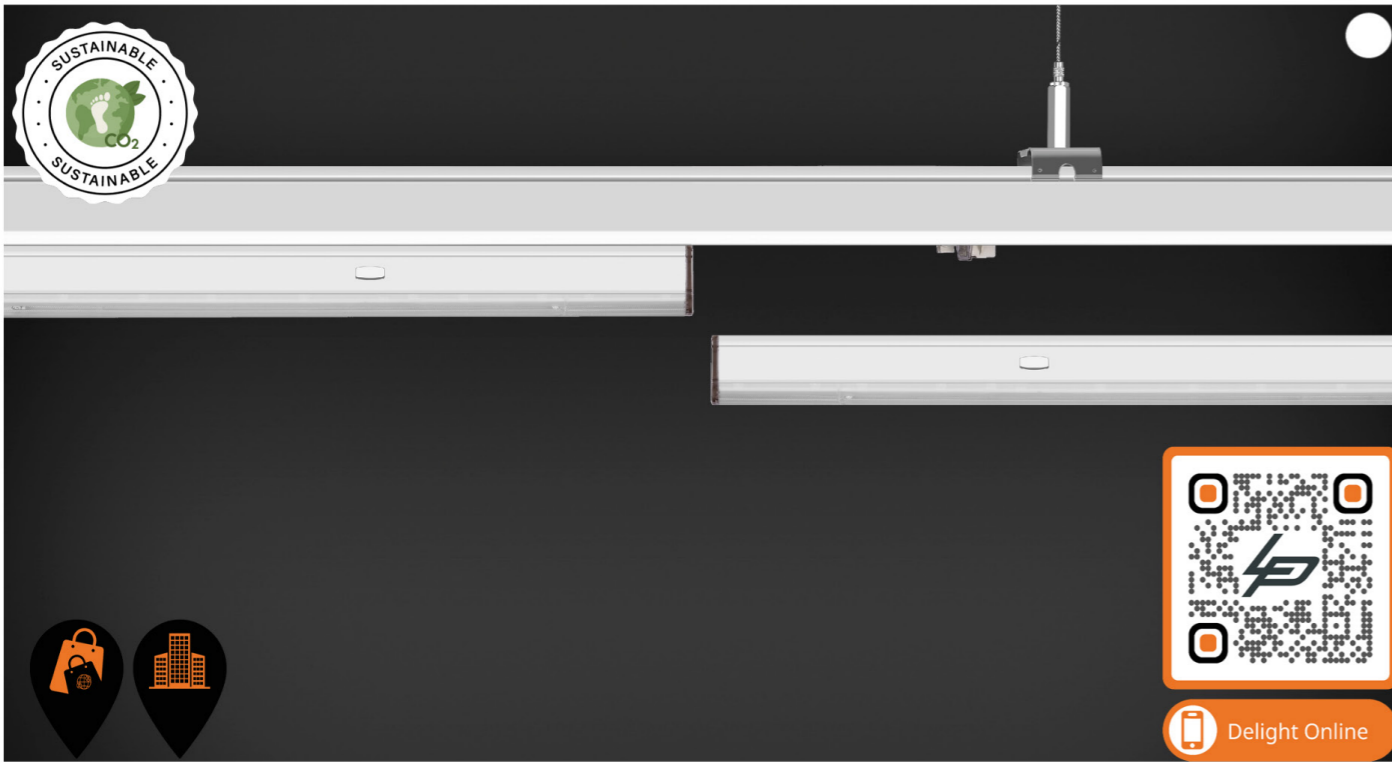
Stringline

Dit distributiecentrum van Acushnet in Helmond is duurzamer gemaakt dankzij onze 'Stringline'.

De Stringline is een lichtlijnsysteem dat zich kenmerkt door eenvoudige installatie, goede lichtopbrengst en hoge lichtuniformiteit. Bovendien biedt dit armatuur een lichtopbrengst van 160lm/w en is voorzien van slimme bewegingssensoren, wat resulteert in energiebesparingen en het magazijnpersoneel in staat stelt veilig te werken.

Vorige Verlichting: TL-buizen
Gewenste Verlichting van de Klant:
Efficiënt, duurzaam, slim en veilig
Oplossing: Stringline LED 4000K, 70W, 1.5 meter





Stringline

Linear LED Lighting



Length	1000mm	1500mm
System Power	30W	50W
CRI	CRI>80	
CCT	4000K	4000K
System Lumen	4555lm	7592lm
System Efficacy	152lm/W	152lm/W
Driver	Non-Dimmable Driver (Included)	
L+B values (50.000 hr)	L80B10 (50.000h)	

*On request also available with other lumen outputs.

Select a trunking system

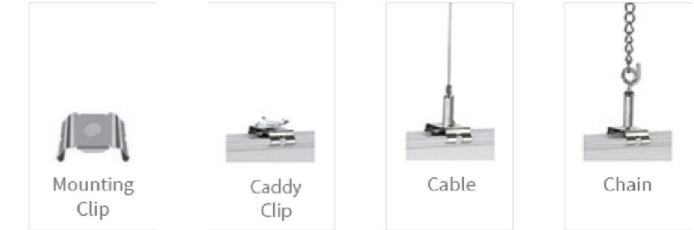
Article no.	Description
2.06.0654	Trunking 1000mm white 8-fold Connector per 500mm
2.06.0655	Trunking 1500mm white 8-fold Connector per 500mm
2.06.0656	Trunking 3000mm white 8-fold Connector per 500mm
2.06.0657	Trunking-end 1000mm white 8-fold Connector per Connector per 500mm
2.06.0658	Trunking-end 1500mm white 8-fold Connector per Connector per 500mm

Select a connector and Endcaps

Article no.	Description
2.01.1238	Power connector 8-fold Light line Stringline
2.01.1274	Connector 8-fold female for Light line Stringline
2.01.1230	Endcap for fixture Light line Stringline
2.01.1275	Endcap for Blind plate Light line Stringline

Select a suspension set

Article no.	Description
2.01.1265	Mounting clip for the Linear LED lighting
2.01.1273	Mounting clip for the Linear LED lighting with caddy clip
2.01.1235	Suspension set cable 3m for Light line Stringline
2.01.1247	Suspension set cable 6m for Light line Stringline
2.01.1236	Suspension set chain 3m for Light line Stringline



Select a blind plate in case there is no light needed

Article no.	Description
2.01.1254	Blind plate 500mm for Light line Stringline
2.01.1255	Blind plate 1000mm for Light line Stringline
2.01.1229	Blind plate 1500mm for Light line Stringline

Select a linear LED Lighting Stringline LED 1000mm

Article no.	Description	Length	CCT	CRI	System Lumen	System Power	Reflector	System Efficacy	8-fold	Driver
2.06.0739	Linear LED Lighting	1000mm	4000K	CRI>80	4555lm	30W	incl. lens 90°	152lm/W	8-fold	incl. Tridonic driver

Select a linear LED Lighting Stringline LED 1500mm

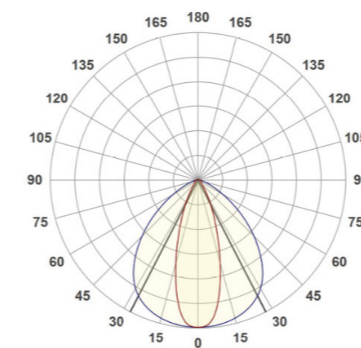
Article no.	Description	Length	CCT	CRI	System Lumen	System Power	Reflector	System Efficacy	8-wire	Driver
2.06.0763	Linear LED Lighting	1500mm	4000K	CRI>80	7592lm	50W	incl. lens 90°	152lm/W	8-wire	incl. Tridonic driver

Select an optional spotlight module

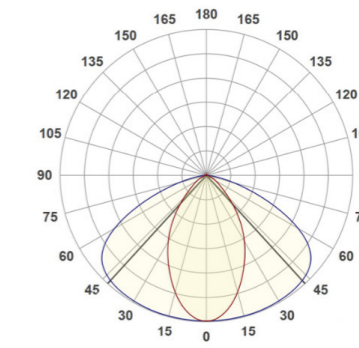
It is possible to place a spotlight module of 500mm in the trunking system to expand your linear lighting system. Please contact one of our advisers to see which spotlights suits your needs.



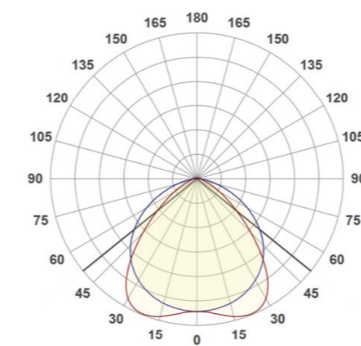
Stringline Linear LED Lighting - Lightfile 4000K 30°



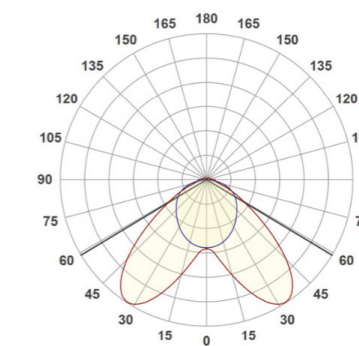
Stringline Linear LED Lighting - Lightfile 4000K 60°



Stringline Linear LED Lighting - Lightfile 4000K 90°



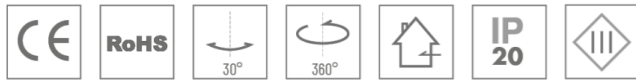
Stringline Linear LED Lighting - Lightfile 4000K 120°





Asta Pendant

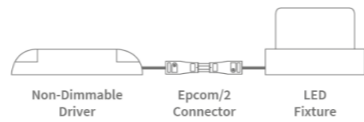
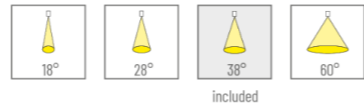
Square Cardan



System Power	26.5W		46W	
CRI	>80Ra			
CCT	3000K	4000K	3000K	4000K
System Lumen	3087lm	3456lm	5362lm	5768lm
System Efficacy	116lm/W	130lm/W	117lm/W	125lm/W
LOR	Up to 85%			
Driver	Non-Dimmable Driver (included in downlight module)			
SDCM	2			
L•B values (50.000 hr)	L90B10 (50.000h)			

* Product information per spot head.

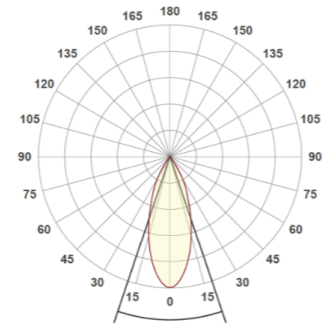
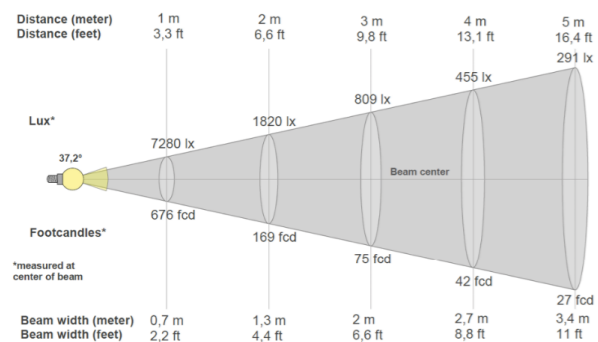
*More options available! Contact us to customize your fixture down to the finest details.



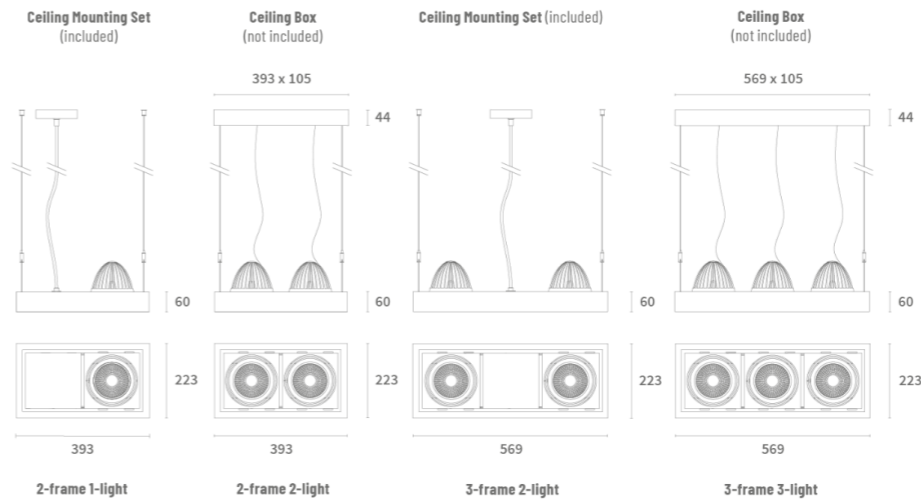
Ceiling Box for driver (not included)



Ceiling Mounting Set (included)



DOWNLIGHT MODULE								
Article No.	Product Name	Color	CCT	CRI	System Lumen	System Power	System Efficacy	Reflector
2.06.0463/2.06.0464	Asta Pendant 2-frame 1-light	Grey	3000K/4000K	>80Ra	3087lm/3456lm	26.5W	116/130 lm/W	38°
2.06.0469/2.06.0470	Asta Pendant 2-frame 1-light	White	3000K/4000K	>80Ra	3087lm/3456lm	26.5W	116/130 lm/W	38°
2.06.0475/2.06.0476	Asta Pendant 2-frame 1-light	Black	3000K/4000K	>80Ra	3087lm/3456lm	26.5W	116/130 lm/W	38°
2.06.0466/2.06.0467	Asta Pendant 2-frame 1-light	Grey	3000K/4000K	>80Ra	5362lm/5768lm	46W	117/125 lm/W	38°
2.06.0472/2.06.0473	Asta Pendant 2-frame 1-light	White	3000K/4000K	>80Ra	5362lm/5768lm	46W	117/125 lm/W	38°
2.06.0478/2.06.0479	Asta Pendant 2-frame 1-light	Black	3000K/4000K	>80Ra	5362lm/5768lm	46W	117/125 lm/W	38°
2.06.0481/2.06.0482	Asta Pendant 2-frame 2-light	Grey	3000K/4000K	>80Ra	2* 3087lm/2* 3456lm	2* 26.5W	2* 116/130 lm/W	38°
2.06.0487/2.06.0488	Asta Pendant 2-frame 2-light	White	3000K/4000K	>80Ra	2* 3087lm/2* 3456lm	2* 26.5W	2* 116/130 lm/W	38°
2.06.0493/2.06.0494	Asta Pendant 2-frame 2-light	Black	3000K/4000K	>80Ra	2* 3087lm/2* 3456lm	2* 26.5W	2* 116/130 lm/W	38°
2.06.0484/2.06.0485	Pendant Asta 2-frame 2-light	Grey	3000K/4000K	>80Ra	2* 5362lm/2* 5768lm	2* 46W	2* 117/125 lm/W	38°
2.06.0490/2.06.0491	Pendant Asta 2-frame 2-light	White	3000K/4000K	>80Ra	2* 5362lm/2* 5768lm	2* 46W	2* 117/125 lm/W	38°
2.06.0496/2.06.0497	Pendant Asta 2-frame 2-light	Black	3000K/4000K	>80Ra	2* 5362lm/2* 5768lm	2* 46W	2* 117/125 lm/W	38°
2.06.0499/2.06.0500	Pendant Asta 3-frame 2-light	Grey	3000K/4000K	>80Ra	2* 3087lm/2* 3456lm	2* 26.5W	2* 116/130 lm/W	38°
2.06.0505/2.06.0506	Pendant Asta 3-frame 2-light	White	3000K/4000K	>80Ra	2* 3087lm/2* 3456lm	2* 26.5W	2* 116/130 lm/W	38°
2.06.0511/2.06.0512	Pendant Asta 3-frame 2-light	Black	3000K/4000K	>80Ra	2* 3087lm/2* 3456lm	2* 26.5W	2* 116/130 lm/W	38°
2.06.0502/2.06.0503	Pendant Asta 3-frame 2-light	Grey	3000K/4000K	>80Ra	2* 5362lm/2* 5768lm	2* 46W	2* 117/125 lm/W	38°
2.06.0508/2.06.0509	Pendant Asta 3-frame 2-light	White	3000K/4000K	>80Ra	2* 5362lm/2* 5768lm	2* 46W	2* 117/125 lm/W	38°
2.06.0514/2.06.0515	Pendant Asta 3-frame 2-light	Black	3000K/4000K	>80Ra	2* 5362lm/2* 5768lm	2* 46W	2* 117/125 lm/W	38°
2.06.0517/2.06.0518	Pendant Asta 3-frame 3-light	Grey	3000K/4000K	>80Ra	3* 3087lm/2* 3456lm	3* 26.5W	3* 116/130 lm/W	38°
2.06.0523/2.06.0524	Pendant Asta 3-frame 3-light	White	3000K/4000K	>80Ra	3* 3087lm/2* 3456lm	3* 26.5W	3* 116/130 lm/W	38°
2.06.0529/2.06.0530	Pendant Asta 3-frame 3-light	Black	3000K/4000K	>80Ra	3* 3087lm/2* 3456lm	3* 26.5W	3* 116/130 lm/W	38°
2.06.0520/2.06.0521	Pendant Asta 3-frame 3-light	Grey	3000K/4000K	>80Ra	3* 5362lm/2* 5768lm	3* 46W	3* 117/125 lm/W	38°
2.06.0526/2.06.0527	Pendant Asta 3-frame 3-light	White	3000K/4000K	>80Ra	3* 5362lm/2* 5768lm	3* 46W	3* 117/125 lm/W	38°
2.06.0532/2.06.0533	Pendant Asta 3-frame 3-light	Black	3000K/4000K	>80Ra	3* 5362lm/2* 5768lm	3* 46W	3* 117/125 lm/W	38°



AVAILABLE BEAM ANGLES	
Article No.	Description
5.14.0153	Reflector 18° for Asta Module
5.14.0154	Reflector 28° for Asta Module
5.14.0156	Reflector 60° for Asta Module

AVAILABLE DRIVERS	
Article No.	Description
-----	Dimmable driver

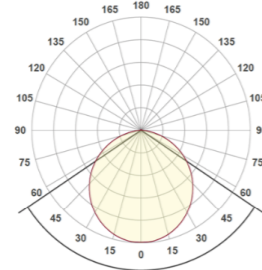
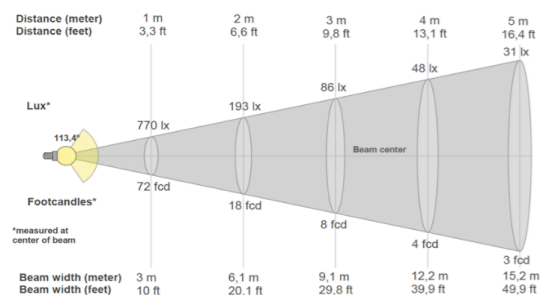


Cecid

Track light with dipswitch



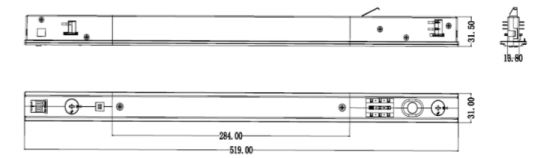
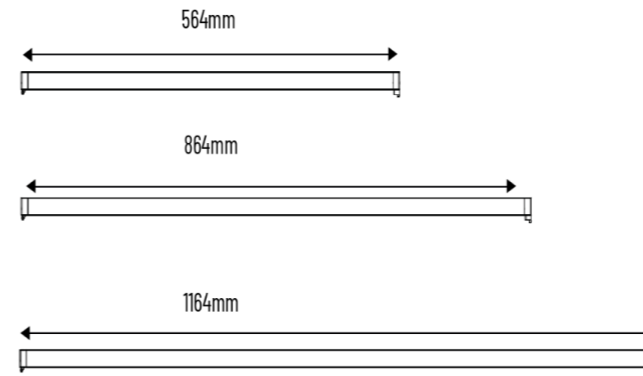
Size	564mm			864mm			1164mm		
System Power	from 15W up to 35W								
CRI	>90Ra								
CCT	3000K	3500K	4000K	3000K	3500K	4000K	3000K	3500K	4000K
System Lumen 15W (300mA)	1695lm	1785lm	1755lm	1725lm	1815lm	1785lm	1755lm	1860lm	1815lm
System Efficacy 15W (300mA)	113lm/W	119lm/W	117lm/W	115lm/W	121lm/W	119lm/W	117lm/W	124lm/W	121lm/W
System Lumen 22W (450mA)	2398lm	2574lm	2464lm	2442lm	2618lm	2508lm	2486lm	2684lm	2552lm
System Efficacy 22W (450mA)	109lm/W	117lm/W	112lm/W	111lm/W	119lm/W	114lm/W	113lm/W	122lm/W	116lm/W
System Lumen 35W (700mA)	3535lm	4025lm	3850lm	3605lm	4060lm	3885lm	3675lm	4130lm	3920lm
System Efficacy 35W (700mA)	101lm/W	115lm/W	110lm/W	103lm/W	116lm/W	111lm/W	105lm/W	118lm/W	112lm/W
L+B values (50.000 hr)	L80B10 (50.000h)								



PRODUCT LIST

Cecid Track Light Dipswitch. Driver not included.

Article No.	Product Name	Color	CCT (dipswitch)	System Lumen	System Power	System Efficacy	Size	CRI
2.17.4661	Track light Cecid	White	3000K/3500K/4000K	up to 4025lm	19W	119lm/W	564mm	>90Ra
2.17.4898	Track light Cecid	White	3000K/3500K/4000K	up to 4060lm	30W	120lm/W	864mm	>90Ra
2.17.4662	Track light Cecid	White	3000K/3500K/4000K	up to 4130lm	35W	121lm/W	1164mm	>90Ra
2.17.4664	Track light Cecid	Black	3000K/3500K/4000K	up to 4025lm	19W	119lm/W	564mm	>90Ra
2.17.4899	Track light Cecid	Black	3000K/3500K/4000K	up to 4060lm	30W	120lm/W	864mm	>90Ra
2.17.4665	Track light Cecid	Black	3000K/3500K/4000K	up to 4130lm	35W	121lm/W	1164mm	>90Ra



ADD-ON LOUVRE CECID PRODUCT LIST

Article No.	Product Description	Color
2.17.4901	Cecid Louvre 564mm wit 930/935/940 80° UGR<19	White
2.17.4902	Cecid Louvre 1164mm wit 930/935/940 80° UGR<19	White
2.17.4903	Cecid Louvre 564mm zwart 930/935/940 80° UGR<19	Black
2.17.4904	Cecid Louvre 1164mm zwart 930/935/940 80° UGR<19	Black



PRODUCT LIST

Article No.	Product Description	Color
3.10.0945	LED driver in-track 35W for Track light Cecid	White
3.10.0946	LED driver in-track 35W for Track light Cecid	Black
3.10.0943	LED driver in-track 35W for Track light Cecid DALI dimmable	White
3.10.0944	LED driver in-track 35W for Track light Cecid DALI dimmable	Black

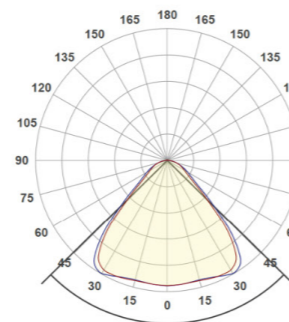
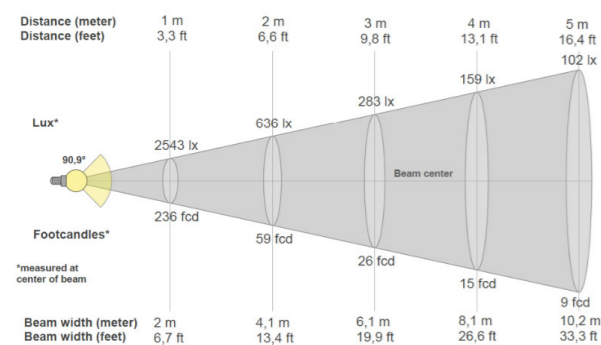


Ardea linear

Track light with dipswitch



System Power	35W		41W		46W		50W	
CRI	>80Ra							
CCT	3000K	4000K	3000K	4000K	3000K	4000K	3000K	4000K
System Lumen	4532lm	4788lm	5152lm	5474lm	5584lm	5967lm	6740lm	7380lm
System Efficacy	130lm/W	137lm/W	126lm/W	133lm/W	121lm/W	129lm/W	135lm/W	147lm/W
L+B values (50.000 hr)	L80B10 (50.000h)							



PRODUCT LIST

Ardea CRI80 30° incl. driver with output selectable dipswitch

Article No.	Product Name	Color	CCT	System Lumen	System Power	System Efficacy	Size
2.17.4334	Track light Ardea	White	3000K	6999lm	48W	146lm/W	1150x 65mm
2.17.4335	Track light Ardea	Black	3000K	6999lm	48W	146lm/W	1150x 65mm
2.17.4336	Track light Ardea	White	4000K	7380lm	48W	154lm/W	1150x 65mm
2.17.4337	Track light Ardea	Black	4000K	7380lm	48W	154lm/W	1150x 65mm

PRODUCT LIST

Ardea CRI80 60° incl. driver with dip switch

Article No.	Product Name	Color	CCT	System Lumen	System Power	System Efficacy	Size
2.17.4338	Track light Ardea	White	3000K	6740lm	48W	140lm/W	1150x 65mm
2.17.4339	Track light Ardea	Black	3000K	6740lm	48W	140lm/W	1150x 65mm
2.17.4340	Track light Ardea	White	4000K	7077lm	48W	147lm/W	1150x 65mm
2.17.4341	Track light Ardea	Black	4000K	7077lm	48W	147lm/W	1150x 65mm

PRODUCT LIST

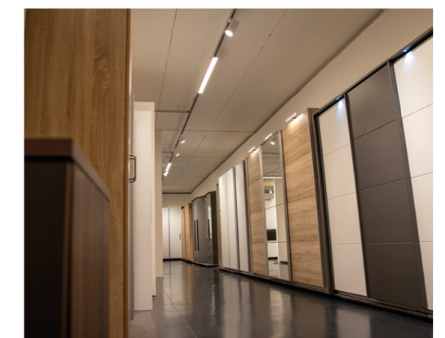
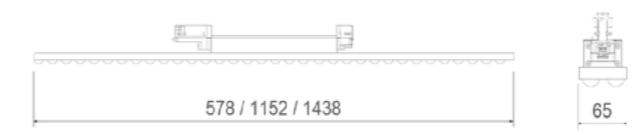
Ardea CRI80 90° incl. driver with output selectable dipswitch

Article No.	Product Name	Color	CCT	System Lumen	System Power	System Efficacy	Size
2.17.4342	Track light Ardea	White	3000K	5999lm	50W	120lm/W	1150x 65mm
2.17.4343	Track light Ardea	Black	3000K	5999lm	50W	120lm/W	1150x 65mm
2.17.4344	Track light Ardea	White	4000K	6407lm	50W	128lm/W	1150x 65mm
2.17.4345	Track light Ardea	Black	4000K	6407lm	50W	128lm/W	1150x 65mm

PRODUCT LIST

Ardea CRI80 25° double asymmetric incl. driver with output selectable dipswitch

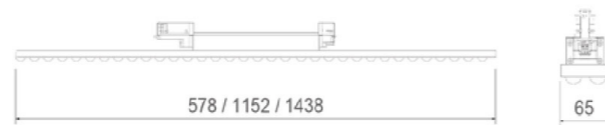
Article No.	Product Name	Color	CCT	System Lumen	System Power	System Efficacy	Size
2.17.4350	Track light Ardea double asymmetric	White	3000K	5525lm	48W	115lm/W	1150x 65mm
2.17.4351	Track light Ardea double asymmetric	Black	3000K	5525lm	48W	115lm/W	1150x 65mm
2.17.4352	Track light Ardea double asymmetric	White	4000K	5834lm	48W	122lm/W	1150x 65mm
2.17.4353	Track light Ardea double asymmetric	Black	4000K	5834lm	48W	122lm/W	1150x 65mm





Ardea Opal

Track light with dipswitch

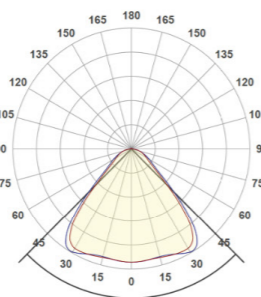
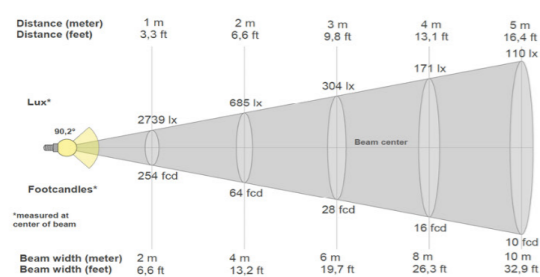


System Power	34W	40W	44W	46W				
CRI	>80Ra							
CCT	3000K	4000K	3000K	4000K	3000K	4000K	3000K	4000K
System Lumen	4022lm	4280lm	4659lm	4950lm	5131lm	5461lm	5525lm	5834lm
System Efficacy	118lm/W	126lm/W	116lm/W	124lm/W	117lm/W	124lm/W	115lm/W	122lm/W
L+B values (50.000 hr)	L80B10 (50.000h)							

PRODUCT LIST

CRI80 S 120° INCL. DRIVER with output selectable dipswitch

Article No.	Product Name	Color	CCT	System Lumen	System Power	System Efficacy	Size
2.17.4346	Track light Ardea Opal	White	3000K	5525lm	48W	115lm/W	1150x 65mm
2.17.4347	Track light Ardea Opal	Black	3000K	5525lm	48W	115lm/W	1150x 65mm
2.17.4348	Track light Ardea Opal	White	4000K	5834lm	48W	121lm/W	1150x 65mm
2.17.4349	Track light Ardea Opal	Black	4000K	5834lm	48W	121lm/W	1150x 65mm



PRODUCT LIST

Ardea CRI80 30° incl. driver with output selectable dipswitch

Article No.	Product Name	Color	CCT	System Lumen	System Power	System Efficacy	Size
2.17.4322	Track light Ardea Panel	White	3000K	10755lm	72W	149lm/W	557x 189mm
2.17.4323	Track light Ardea Panel	Black	3000K	10755lm	72W	149lm/W	557x 189mm
2.17.4324	Track light Ardea Panel	White	4000K	11669lm	70W	167lm/W	557x 189mm
2.17.4325	Track light Ardea Panel	Black	4000K	11669lm	70W	167lm/W	557x 189mm

PRODUCT LIST

Ardea CRI80 60° incl. driver with output selectable dipswitch

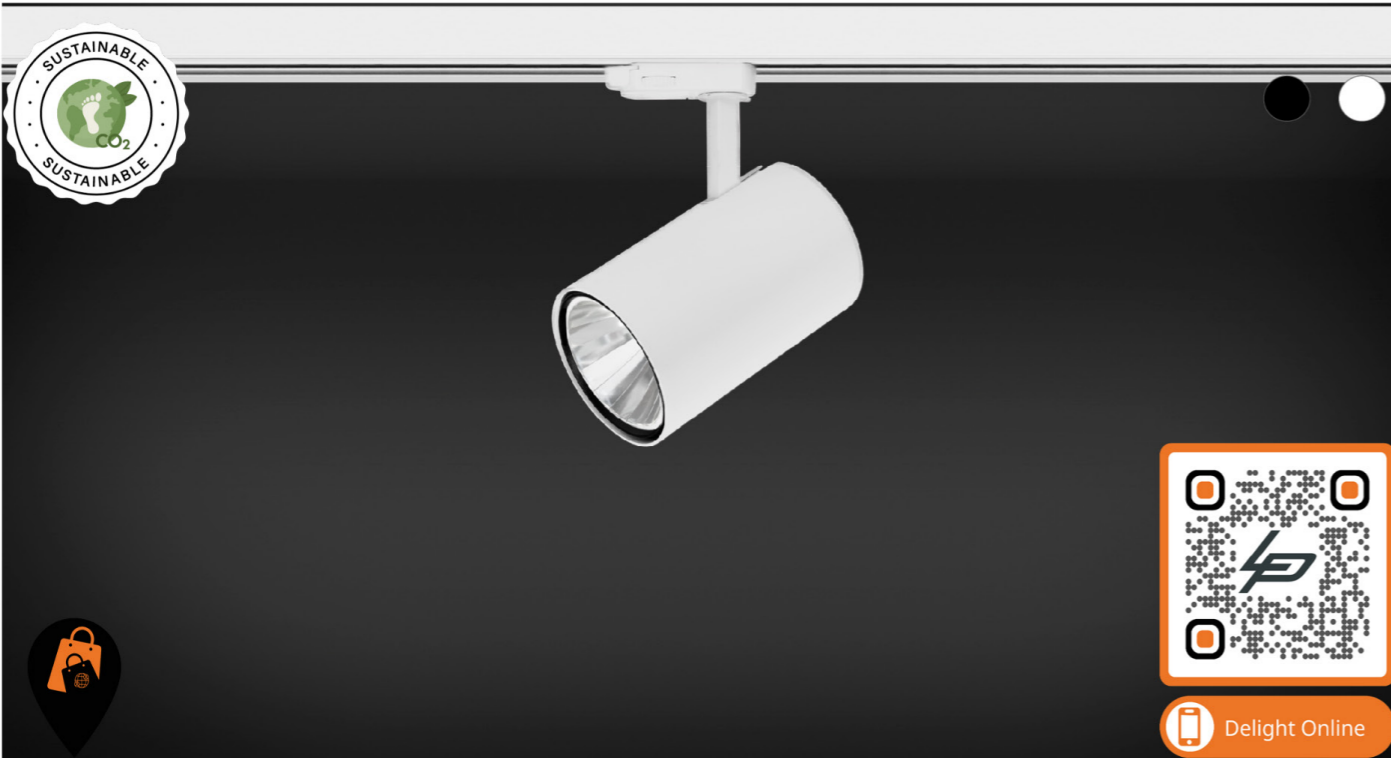
Article No.	Product Name	Color	CCT	System Lumen	System Power	System Efficacy	Size
2.17.4326	Track light Ardea Panel	White	3000K	11045lm	72W	153lm/W	557x 189mm
2.17.4327	Track light Ardea Panel	Black	3000K	11045lm	72W	153lm/W	557x 189mm
2.17.4328	Track light Ardea Panel	White	4000K	11984lm	70W	171lm/W	557x 189mm
2.17.4329	Track light Ardea Panel	Black	4000K	11984lm	70W	171lm/W	557x 189mm

PRODUCT LIST

Ardea CRI80 90° incl. driver with output selectable dipswitch

Article No.	Product Name	Color	CCT	System Lumen	System Power	System Efficacy	Size
2.17.4330	Track light Ardea Panel	White	3000K	10273lm	72W	143lm/W	557x 189mm
2.17.4331	Track light Ardea Panel	Black	3000K	10273lm	72W	143lm/W	557x 189mm
2.17.4332	Track light Ardea Panel	White	4000K	10997lm	70W	157lm/W	557x 189mm
2.17.4333	Track light Ardea Panel	Black	4000K	10997lm	70W	157lm/W	557x 189mm



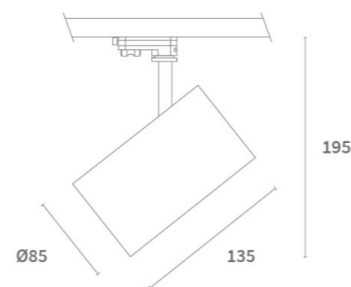


Stio

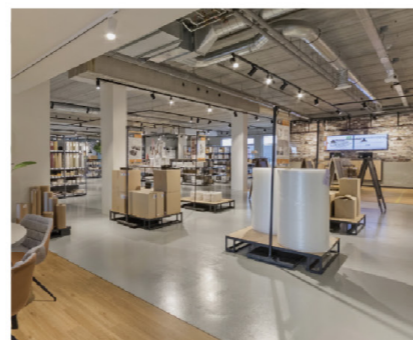
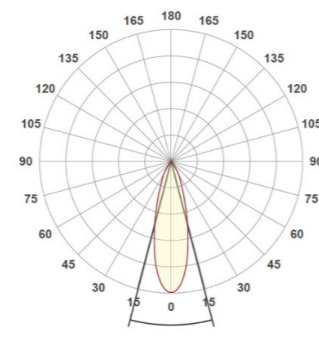
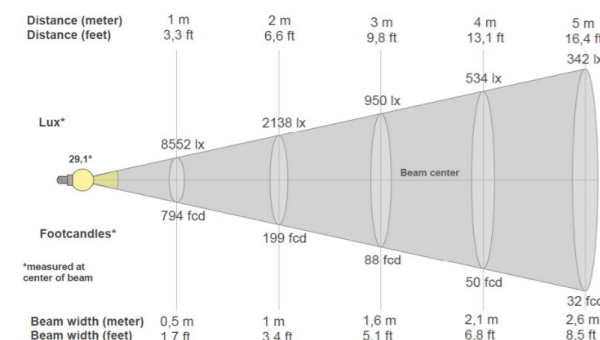
3-Phase Track Light



CRI	CRI>90			
CCT	3000K PW		4000K PW	
LOR	>85			
UGR	<20			
SDCM	2			
L+B values (50.000 hr)	L90B10 (50.000h)			
System power	18.5W	22.5W	18.5W	22.5W
System Lumen	2723lm	3241lm	2889lm	3401lm
System Efficacy	148lm/W	144lm/W	158lm/W	152lm/W
Driver	500mA	600mA	500mA	600mA

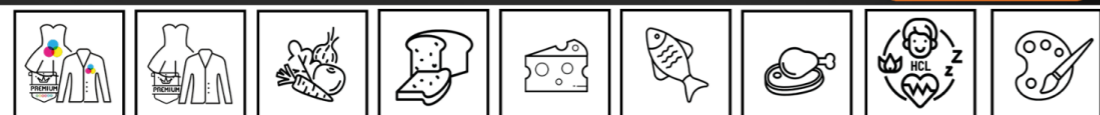


*More options available! Contact us to customize your fixture down to the finest details.



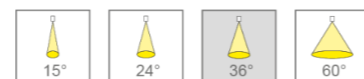
PRODUCT LIST								
Article No.	Product Name	Colour	CCT	CRI	System Lumen	System Power	System Efficacy	Reflector
2.17.4760	Tracklight Stio	White	3000K PW	>90Ra	2844m	18.5W	154lm/W	18°
2.17.4763	Tracklight Stio	Black	3000K PW	>90Ra	2844m	18.5W	154lm/W	18°
2.17.4772	Tracklight Stio	White	3000K PW	>90Ra	3294lm	22.5W	146lm/W	18°
2.17.4775	Tracklight Stio	Black	3000K PW	>90Ra	3294lm	22.5W	146lm/W	18°
2.17.4766	Tracklight Stio	White	4000K PW	>90Ra	2975lm	18.5W	160lm/W	18°
2.17.4769	Tracklight Stio	Black	4000K PW	>90Ra	2975lm	18.5W	160lm/W	18°
2.17.4778	Tracklight Stio	White	4000K PW	>90Ra	3412lm	22.5W	152lm/W	18°
2.17.4781	Tracklight Stio	Black	4000K PW	>90Ra	3412lm	22.5W	151lm/W	18°
2.17.4761	Tracklight Stio	White	3000K PW	>90Ra	2748lm	18.5W	148lm/W	28°
2.17.4764	Tracklight Stio	Black	3000K PW	>90Ra	2748lm	18.5W	148lm/W	28°
2.17.4773	Tracklight Stio	White	3000K PW	>90Ra	3264lm	22.5W	146lm/W	28°
2.17.4776	Tracklight Stio	Black	3000K PW	>90Ra	3264lm	22.5W	146lm/W	28°
2.17.4767	Tracklight Stio	White	4000K PW	>90Ra	2879lm	18.5W	155lm/W	28°
2.17.4770	Tracklight Stio	Black	4000K PW	>90Ra	2879lm	18.5W	155lm/W	28°
2.17.4779	Tracklight Stio	White	4000K PW	>90Ra	3392lm	22.5W	150lm/W	28°
2.17.4782	Tracklight Stio	Black	4000K PW	>90Ra	3392lm	22.5W	150lm/W	28°
2.17.4677	Tracklight Stio	White	3000K PW	>90Ra	2723lm	18.5W	148lm/W	36°
2.17.4678	Tracklight Stio	Black	3000K PW	>90Ra	2723lm	18.5W	148lm/W	36°
2.17.4681	Tracklight Stio	White	3000K PW	>90Ra	3214lm	22.5W	148lm/W	36°
2.17.4682	Tracklight Stio	Black	3000K PW	>90Ra	3214lm	22.5W	148lm/W	36°
2.17.4679	Tracklight Stio	White	4000K PW	>90Ra	2889lm	18.5W	158lm/W	36°
2.17.4680	Tracklight Stio	Black	4000K PW	>90Ra	2889lm	18.5W	158lm/W	36°
2.17.4683	Tracklight Stio	White	4000K PW	>90Ra	3401lm	22.5W	152lm/W	36°
2.17.4684	Tracklight Stio	Black	4000K PW	>90Ra	3401lm	22.5W	152lm/W	36°
2.17.4762	Tracklight Stio	White	3000K PW	>90Ra	2728lm	18.5W	148lm/W	55°
2.17.4765	Tracklight Stio	Black	3000K PW	>90Ra	2728lm	18.5W	148lm/W	55°
2.17.4774	Tracklight Stio	White	3000K PW	>90Ra	3241lm	22.5W	144lm/W	55°
2.17.4777	Tracklight Stio	Black	3000K PW	>90Ra	3241lm	22.5W	144lm/W	55°
2.17.4768	Tracklight Stio	White	4000K PW	>90Ra	2891lm	18.5W	156lm/W	55°
2.17.4771	Tracklight Stio	Black	4000K PW	>90Ra	2891lm	18.5W	156lm/W	55°
2.17.4780	Tracklight Stio	White	4000K PW	>90Ra	3387lm	22.5W	150lm/W	55°
2.17.4783	Tracklight Stio	Black	4000K PW	>90Ra	3387lm	22.5W	150lm/W	55°

AVAILABLE BEAM ANGLES	
Article No.	Description
5.14.0329	Reflector 18° for Stio LED
5.14.0330	Reflector 28° for Stio LED
5.14.0331	Reflector 36° for Stio LED
5.14.0332	Reflector 55° for Stio LED

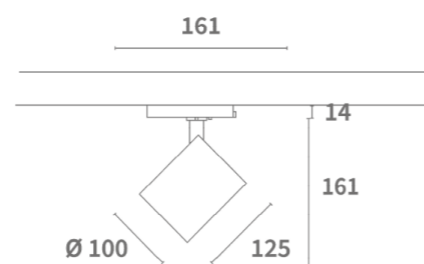


Pinta In-track

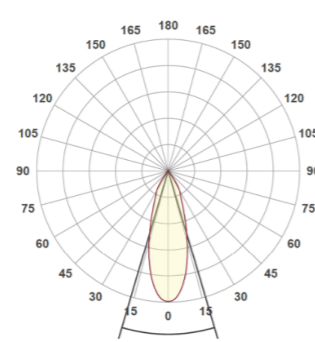
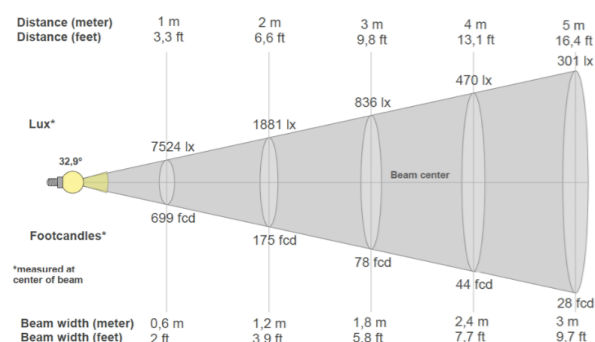
3-Phase Track Light



System Power	from 14.5W up to 43W	
CRI	>90Ra	
CCT	3000K	3000K PW
Sytem Lumen	from 1849m up to 4697lm	2620lm to 4744lm
System Efficacy	up to 140lm/W	
Driver	Non-Dimmable Driver (included)	
SDCM	2	
L+B values (50.000 hr)	L90B10 (50.000h)	



*More options available! Contact us to customize your fixture down to the finest details.



Article No.	Product Name	Color	CCT	CRI	System Lumen	System Power	System Efficacy	Driver	Reflector
2.17.3093	Pinta In-Track	White	3000K	>90Ra	1849lm	14,5W	128lm/W	350mA	24°
2.17.3094	Pinta In-Track	White	3000K	>90Ra	1924lm	14,5W	133lm/W	350mA	36°
2.17.3097	Pinta In-Track	Black	3000K	>90Ra	1849lm	14,5W	128lm/W	350mA	24°
2.17.3098	Pinta In-Track	Black	3000K	>90Ra	1924lm	14,5W	133lm/W	350mA	36°
2.17.3105	Pinta In-Track	White	3000K	>90Ra	2612lm	20W	131lm/W	500mA	24°
2.17.3106	Pinta In-Track	White	3000K	>90Ra	2718lm	20W	136lm/W	500mA	36°
2.17.3109	Pinta In-Track	Black	3000K	>90Ra	2612lm	20W	131lm/W	500mA	24°
2.17.3110	Pinta In-Track	Black	3000K	>90Ra	2718lm	20W	136lm/W	500mA	36°
2.17.2708	Pinta In-Track	White	3000K	>90Ra	3584lm	27W	133lm/W	700mA	24°
2.17.2709	Pinta In-Track	White	3000K	>90Ra	3730lm	27W	138lm/W	700mA	36°
2.17.2712	Pinta In-Track	Black	3000K	>90Ra	3584lm	27W	133lm/W	700mA	24°
2.17.2713	Pinta In-Track	Black	3000K	>90Ra	3730lm	27W	138lm/W	700mA	36°
2.17.2720	Pinta In-Track	White	3000K	>90Ra	4513lm	37W	122lm/W	900mA	24°
2.17.2721	Pinta In-Track	White	3000K	>90Ra	4697lm	37W	127lm/W	900mA	36°
2.17.2724	Pinta In-Track	Black	3000K	>90Ra	4513lm	37W	122lm/W	900mA	24°
2.17.2725	Pinta In-Track	Black	3000K	>90Ra	4697lm	37W	127lm/W	900mA	36°
2.17.3141	Pinta In-Track	White	3000K PW	>90Ra	2637lm	20W	132lm/W	500mA	24°
2.17.3142	Pinta In-Track	White	3000K PW	>90Ra	2745lm	20W	137lm/W	500mA	36°
2.17.3145	Pinta In-Track	Black	3000K PW	>90Ra	2637lm	20W	132lm/W	500mA	24°
2.17.3146	Pinta In-Track	Black	3000K PW	>90Ra	2745lm	20W	137lm/W	500mA	36°
2.17.2732	Pinta In-Track	White	3000K PW	>90Ra	3620lm	27W	134lm/W	700mA	24°
2.17.2733	Pinta In-Track	White	3000K PW	>90Ra	3768lm	27W	140lm/W	700mA	36°
2.17.2736	Pinta In-Track	Black	3000K PW	>90Ra	3620lm	27W	134lm/W	700mA	24°
2.17.2737	Pinta In-Track	Black	3000K PW	>90Ra	3768lm	27W	140lm/W	700mA	36°
2.17.2744	Pinta In-Track	White	3000K PW	>90Ra	4558lm	37W	123lm/W	900mA	24°
2.17.2745	Pinta In-Track	White	3000K PW	>90Ra	4744lm	37W	128lm/W	900mA	36°
2.17.2748	Pinta In-Track	Black	3000K PW	>90Ra	4558lm	37W	123lm/W	900mA	24°
2.17.2749	Pinta In-Track	Black	3000K PW	>90Ra	4744lm	37W	128lm/W	900mA	36°

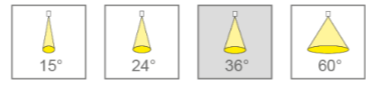
Article No.	Description
5.14.0193	Reflector 15° for Pinta In-track
5.14.0194	Reflector 24° for Pinta In-track
5.14.0195	Reflector 36° for Pinta In-track
5.14.0196	Reflector 60° for Pinta In-track

Article No.	Description
	3-Phase Tracks and accessories

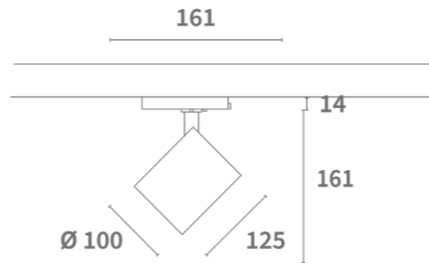


Pinta In-track

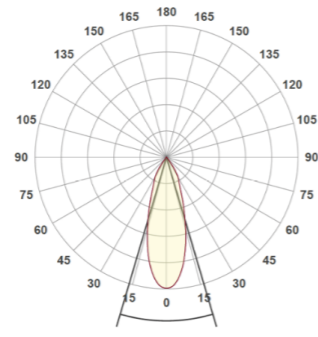
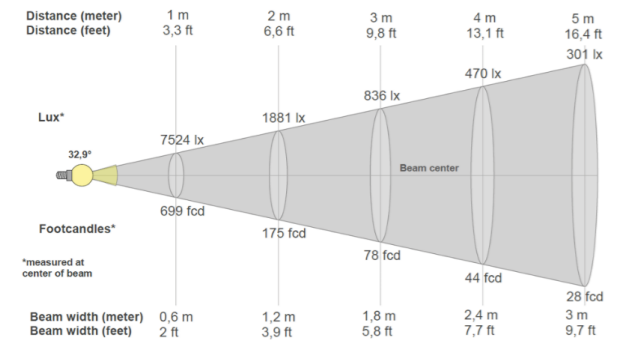
3-Phase Track Light



System Power	from 14.5W up to 43W
CRI	>90Ra
CCT	4000K PW
System Lumen	from 1981lm up to 5034lm
System Efficacy	up to 148lm/W
Driver	Non-Dimmable Driver (included)
SDCM	2
L+B values (50.000 hr)	L90B10 (50.000h)



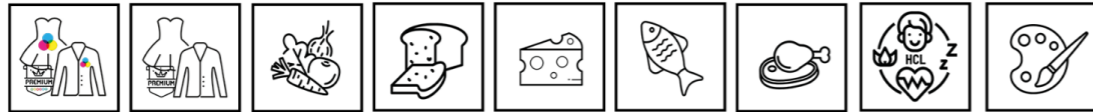
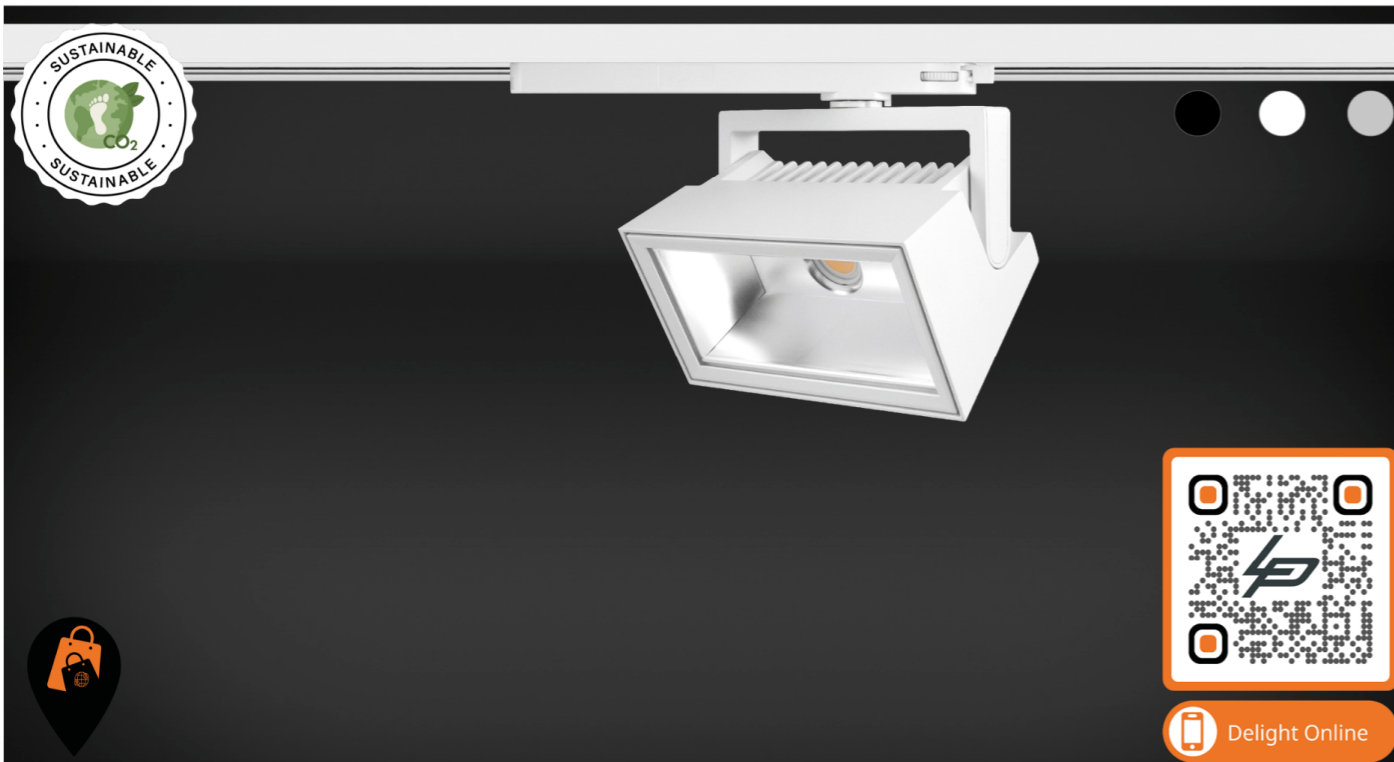
*More options available! Contact us to customize your fixture down to the finest details.



Article No.	model	Color	CCT	CRI	System Lumen	System Power	System Efficacy	Driver	Reflector
2.17.3129	Pinta In-Track	White	4000K PW	>90Ra	1981lm	14,5W	137lm/W	350mA	24°
2.17.3130	Pinta In-Track	White	4000K PW	>90Ra	2062lm	14,5W	142lm/W	350mA	36°
2.17.3133	Pinta In-Track	Black	4000K PW	>90Ra	1981lm	14,5W	137lm/W	350mA	24°
2.17.3134	Pinta In-Track	Black	4000K PW	>90Ra	2062lm	14,5W	142lm/W	350mA	36°
2.17.3153	Pinta In-Track	White	4000K PW	>90Ra	2798lm	20W	140lm/W	500mA	24°
2.17.3154	Pinta In-Track	White	4000K PW	>90Ra	2912lm	20W	146lm/W	500mA	36°
2.17.3157	Pinta In-Track	Black	4000K PW	>90Ra	2798lm	20W	140lm/W	500mA	24°
2.17.3158	Pinta In-Track	Black	4000K PW	>90Ra	2912lm	20W	146lm/W	500mA	36°
2.17.2756	Pinta In-Track	White	4000K PW	>90Ra	3840lm	27W	142lm/W	700mA	24°
2.17.2757	Pinta In-Track	White	4000K PW	>90Ra	3997lm	27W	148lm/W	700mA	36°
2.17.2760	Pinta In-Track	Black	4000K PW	>90Ra	3840lm	27W	142lm/W	700mA	24°
2.17.2761	Pinta In-Track	Black	4000K PW	>90Ra	3997lm	27W	148lm/W	700mA	36°
2.17.2768	Pinta In-Track	White	4000K PW	>90Ra	4837lm	37W	131lm/W	900mA	24°
2.17.2769	Pinta In-Track	White	4000K PW	>90Ra	5034lm	37W	136lm/W	900mA	36°
2.17.2773	Pinta In-Track	Black	4000K PW	>90Ra	5034lm	37W	136lm/W	900mA	24°
2.17.2774	Pinta In-Track	Black	4000K PW	>90Ra	5022lm	37W	136lm/W	900mA	60°

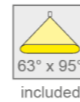


AVAILABLE BEAM ANGLES	
Article No.	Description
5.14.0193	Reflector 15° for Pinta In-track
5.14.0194	Reflector 24° for Pinta In-track
5.14.0195	Reflector 36° for Pinta In-track
5.14.0196	Reflector 60° for Pinta In-track
ALSO AVAILABLE	
Article No.	Description
	3-Phase Tracks and accessories

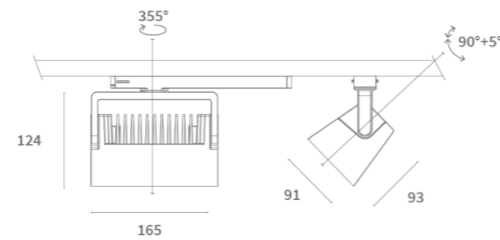


Wally In-track

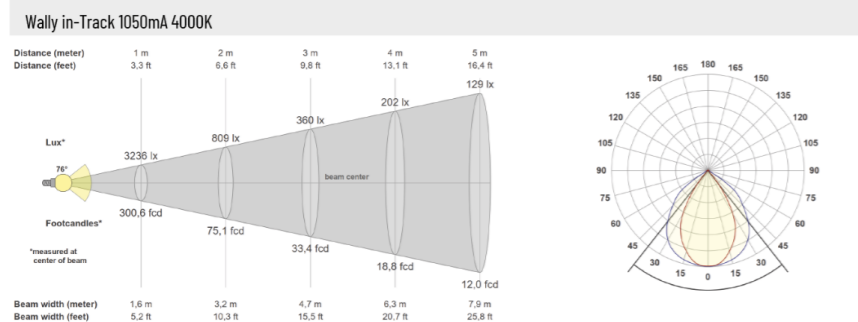
3-Phase Track Light Wallwasher



System Power	from 27.5W up to 40W		
CRI	>90Ra		
CCT	3000K PW	4000K PW	3000K
System Lumen	3514lm up to 5065lm	3632lm up to 5236lm	3478lm up to 5013lm
System Efficacy	up to 130lm/W	up to 134lm/W	up to 128lm/W
Driver	Non-Dimmable Driver or DALI Dimmable Driver included		
SDCM	2		
L+B values (50.000 hr)	L90B10 (50.000h)		



*More options available! Contact us to customize your fixture down to the finest details.

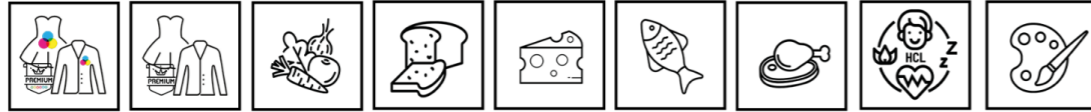


Article No.	Product Name	Color	CCT	CRI	System Lumen	System Power	System Efficacy	Driver	DALI
2.17.3513	Wally In-track	White	3000K	>90Ra	3478lm	27,5W	126lm/W	700mA	
2.17.3514	Wally In-track	Black	3000K	>90Ra	3478lm	27,5W	126lm/W	700mA	
2.17.3516	Wally In-track	White	3000K	>90Ra	3478lm	27,5W	126lm/W	700mA	DALI
2.17.3517	Wally In-track	Black	3000K	>90Ra	3478lm	27,5W	126lm/W	700mA	DALI
2.17.3519	Wally In-track	White	3000K	>90Ra	3929lm	30,5W	129lm/W	800mA	
2.17.3520	Wally In-track	Black	3000K	>90Ra	3929lm	30,5W	129lm/W	800mA	
2.17.3522	Wally In-track	White	3000K	>90Ra	4372lm	34W	129lm/W	900mA	
2.17.3523	Wally In-track	Black	3000K	>90Ra	4372lm	34W	129lm/W	900mA	
2.17.3525	Wally In-track	White	3000K	>90Ra	5013lm	40W	125lm/W	1050mA	
2.17.3526	Wally In-track	Black	3000K	>90Ra	5013lm	40W	125lm/W	1050mA	
2.17.3528	Wally In-track	White	3000K	>90Ra	5013lm	40W	125lm/W	1050mA	DALI
2.17.3529	Wally In-track	Black	3000K	>90Ra	5013lm	40W	125lm/W	1050mA	DALI
2.17.3531	Wally In-track	White	3000K PW	>90Ra	3514lm	27,5W	128lm/W	700mA	
2.17.3532	Wally In-track	Black	3000K PW	>90Ra	3514lm	27,5W	128lm/W	700mA	
2.17.3534	Wally In-track	White	3000K PW	>90Ra	3514lm	27,5W	128lm/W	700mA	DALI
2.17.3535	Wally In-track	Black	3000K PW	>90Ra	3514lm	27,5W	128lm/W	700mA	DALI
2.17.3537	Wally In-track	White	3000K PW	>90Ra	3969lm	30,5W	130lm/W	800mA	
2.17.3538	Wally In-track	Black	3000K PW	>90Ra	3969lm	30,5W	130lm/W	800mA	
2.17.3540	Wally In-track	White	3000K PW	>90Ra	4415lm	34W	130lm/W	900mA	
2.17.3541	Wally In-track	Black	3000K PW	>90Ra	4415lm	34W	130lm/W	900mA	
2.17.3543	Wally In-track	White	3000K PW	>90Ra	5065lm	40W	127lm/W	1050mA	
2.17.3544	Wally In-track	Black	3000K PW	>90Ra	5065lm	40W	127lm/W	1050mA	
2.17.3546	Wally In-track	White	3000K PW	>90Ra	5065lm	40W	127lm/W	1050mA	DALI
2.17.3547	Wally In-track	Black	3000K PW	>90Ra	5065lm	40W	127lm/W	1050mA	DALI
2.17.3567	Wally In-track	White	4000K PW	>90Ra	3632lm	27,5W	132lm/W	700mA	
2.17.3568	Wally In-track	Black	4000K PW	>90Ra	3632lm	27,5W	132lm/W	700mA	
2.17.3570	Wally In-track	White	4000K PW	>90Ra	3632lm	27,5W	132lm/W	700mA	DALI
2.17.3571	Wally In-track	Black	4000K PW	>90Ra	3632lm	27,5W	132lm/W	700mA	DALI
2.17.3573	Wally In-track	White	4000K PW	>90Ra	4104lm	30,5W	135lm/W	800mA	
2.17.3574	Wally In-track	Black	4000K PW	>90Ra	4104lm	30,5W	135lm/W	800mA	
2.17.3576	Wally In-track	White	4000K PW	>90Ra	4564lm	34W	134lm/W	900mA	
2.17.3577	Wally In-track	Black	4000K PW	>90Ra	4564lm	34W	134lm/W	900mA	
2.17.3579	Wally In-track	White	4000K PW	>90Ra	5236lm	40W	131lm/W	1050mA	
2.17.3580	Wally In-track	Black	4000K PW	>90Ra	5236lm	40W	131lm/W	1050mA	
2.17.3582	Wally In-track	Black	4000K PW	>90Ra	5236lm	40W	131lm/W	1050mA	DALI
2.17.3583	Wally In-track	Black	4000K PW	>90Ra	5236lm	40W	131lm/W	1050mA	DALI





Delight Online



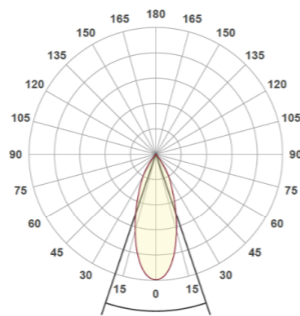
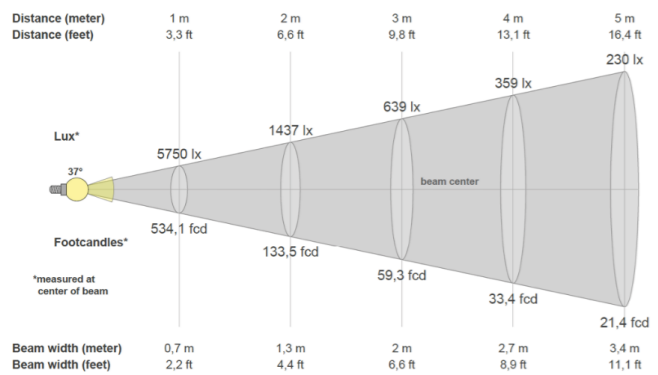
Tubo Short

3-Phase Track Light



System Power	25.5W	32W
CRI	>90Ra	
CCT	3000K	
System Lumen	3132lm	3980lm
System Efficacy	123lm/W	124lm/W
LOR	>85%	
Driver	Non-Dimmable Driver (included)	
SDCM	2	
L+B values (50,000 hr)	L90B10 (50,000h)	

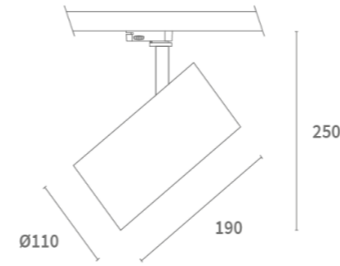
*More options available! Contact us to customize your fixture down to the finest details.



PRODUCT LIST

Article No.	Product Name	Color	CCT	CRI	System Lumen	System Power	System Efficacy	Reflector
2.17.2515	Tubo Short	Grey	3000K	>90Ra	3132lm	25.5W	123lm/W	36°
2.17.2516	Tubo Short	White	3000K	>90Ra	3132lm	25.5W	123lm/W	36°
2.17.2517	Tubo Short	Black	3000K	>90Ra	3132lm	25.5W	123lm/W	36°
2.17.2675	Tubo Short	Grey	3000K	>90Ra	3980lm	32W	124lm/W	36°
2.17.2529	Tubo Short	White	3000K	>90Ra	3980lm	32W	124lm/W	36°
2.17.2554	Tubo Short	Black	3000K	>90Ra	3980lm	32W	124lm/W	36°
2.17.2565	Tubo Short	Grey	3000K PW	>90Ra	3277lm	26.1W	125lm/W	36°
2.17.3284	Tubo Short	White	3000K PW	>90Ra	3277lm	26.1W	125lm/W	36°
2.17.2557	Tubo Short	Black	3000K PW	>90Ra	3277lm	26.1W	125lm/W	36°

Also available: CRI >80Ra and Dali
This is a small selection from our portfolio. Please contact us for a suitable solution for your lighting project.



AVAILABLE BEAM ANGLES

Article No.	Description
5.14.0173	Reflector 15° for Tubo Short
5.14.0174	Reflector 24° for Tubo Short
5.14.0176	Reflector 60° for Tubo Short

ALSO AVAILABLE

Article No.	Description	Article No.	Description	Article No.	Description
	3-Phase Tracks and accessories	2.01.0933	Honeycomb Louvre for Tubo Short	2.01.0953	Barn Doors Black for Tubo Short
	DALI Dimmable Driver	2.01.0942	Front Ring Black for Tubo Short	2.01.0952	Barn Doors White for Tubo Short

FLEXIBLE
PERSONAL
CRAFTMANSHIP



Follow us for more!

@LUMIPARTSLIGHTING

