

Linear LED

A VERSATILE WAY OF LIGHTING

LUMIPARTS PG.12

LIGHT COLOURS AND PERCEPTION

COMBINATION CARD PG.35

LED STRIP AND PROFILES

ASSORTIMENT
LEDSTRIPS

KNOWHOWS PG. 22

**WHAT DO YOU
HAVE TO KEEP IN MIND?
WITH EYE FOR DETAILS**

COREVALUES PG. 38

SERVICE AND SUPPLY



Made with Passion

The Process

At Lumiparts we believe that when you make the right choice, it is love from the first light. Of course we also give some love to the linear led products. From the moment they come in, to a ready-made product. When the LED strips are taken from our warehouse, they go straight to our assembly department. Here, all parts are made into a whole. Our employees customise the LED strip and can mount it in a profile if required. The drivers can also be mounted in such a way that the whole will be delivered as a plug and play unit.

Our services

We check our products one last time before they are ready for transport, so that the LED strips leave our factory in good working order. This way, the quality can be guaranteed and every installer experiences more convenience during installation.

To make you acquainted with the Lumiparts LED strip range, we have developed LED Linear demo cases. These demo cases contain all our LED strips, a working driver and a number of LED profiles so that the lighting effect of each LED strip can be demonstrated. Would you like to receive a demonstration? Our account managers will gladly visit you!

Contents

4. Passion of Lumiparts

From demo boxes to ready-to-install products

5. LED strips Micus, Larid, Rubec & Pluviam

12. Light colours and perception

The light colour of every luminaire is important, and this also applies to the use of linear LED. We explain which light colours are used in our linear LED range and which effects are associated with them.

14. Led strips Extro, Aves, Elus and trivi

22. Know-how: With an eye for detail

We work with different terms within our LED strip range, which are put in the spotlight.

30. Drivers & controls

What kind of driver do you need for your project? Are you going for a dali, casambi, primary dimmable or on/off driver?

34. LED strip profiles

Led strip profiles come in all shapes and sizes. Our range is made up of recessed, surface-mounted and pendulum profiles.

25. LED strip Rius, Nevia and lupareel

35. Combination menu LED strips & profiles

38. Our service and delivery

Micus

The Micus is based on the latest developments in the field of LED strips and easily creates a long uninterrupted line of light. The COB technology of this LED strip creates one constant light line and ensures that no dots are visible in the strip. Because of these properties, the Micus can be easily processed in sight and can be applied in the lowest LED profiles. Micus is available in 2700K, 3000K and 4000K.



2700 K



3000 K



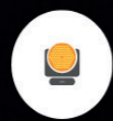
4000 K



948-1046
lm/m



CRI 90



COB



IP20



2,9 cm





Larid tunable white

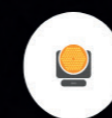
The Larid LED strip is suitable for lighting rooms where daylight or dynamic light is required. Because of the tuneable white option, the colour temperature can be set from 2700K to 5000K. This LED strip is capable of imitating the rhythm of the day. The Larid can be used in DALI (DT8) systems and can be supplied with a simple wall/remote control.



635-1338 lm/m



CRI 90



240 Leds/M



IP20



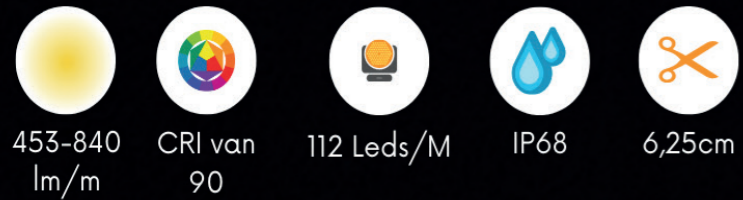
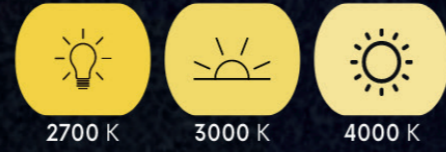
5cm



2700 K - 5000 K

Neon Rubec

The water- and UV-resistant Neon Rubec LED strip is ideal for indoor and outdoor use. The Rubec comes on a roll of up to 10 metres with 112 LEDs per metre so that there are no light interruptions. This makes the Rubec suitable for use in both large and small projects and for illuminating façades or logos. The Rubec can be shortened at every 6.25 cm of the led strip. This LED strip does not require the shielding of an LED profile because it has an opaque finish. The IP value of the Rubec is IP68, making it even resistant to salt water.





Pluviam

The Pluviam has a CRI of >90 and is available in a 2700-, 3000- or 4000K variant. The Pluviam is UV and seawater resistant. This LED strip is therefore very suitable for outdoor use. The Pluviam is available with 112 or 176 LEDs per metre and can be shortened every 5cm.



595-670lm/m
1461-1746lm/m



CRI 90



112/176
Leds/M



IP67



5cm



2700 K



3000 K



4000 K

Lighting colours & Experience

The light colour of a LED strip is very important for the end goal of a project. Within each sector, there are different recommendations for each application area.

Hospitality and residential construction

Warmer light colours with a value of up to 2700K are often used to create atmospheric and relaxed spaces. These values are comparable with the look of candlelight or halogen lighting. These light colours are suitable for use in the hospitality industry and in housing, among other things.

Dim to warm (D2W)

Dim to warm LED strips ensure that the light colour of the LED strip takes on a warmer temperature as it is dimmed. This can be from 2700K to 1800K or from 3000K to 2200K. This form of lighting is ideal for use within residential buildings and the hospitality industry, as it can provide a room with multiple atmospheres.

Retail fitting rooms & shops

Within the Retail sector, the typeshop plays a major role in determining the light temperature. We recommend using a natural lighting effect for the interior of a shop and a warmer colour tone, ranging from 2700K to 3000K, for fitting rooms.

These warm colours have a psychologically positive effect on the self-image of visitors, which leads to more (clothing) purchases.

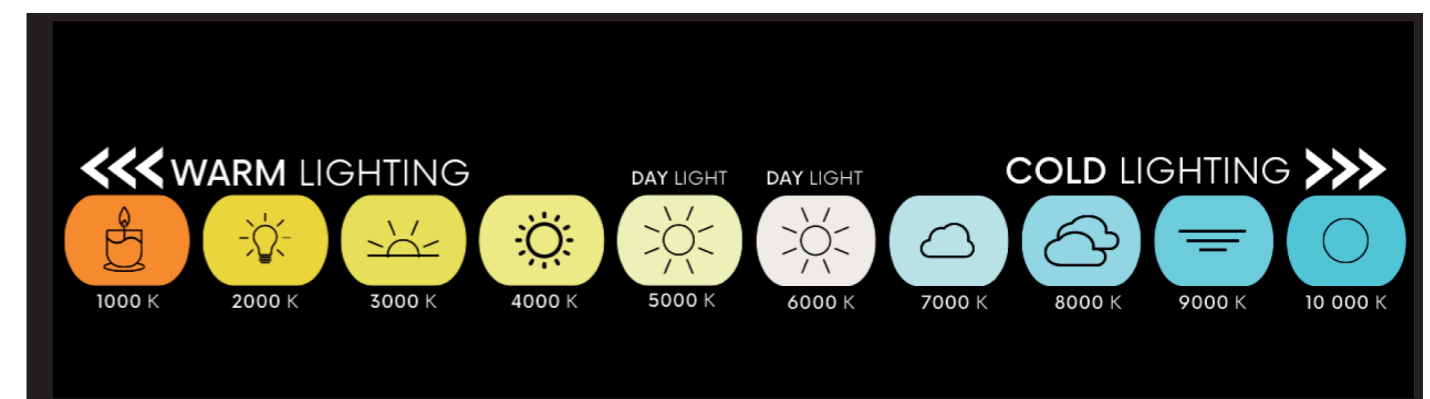
Within general areas in the retail branch, a daylight-related kelvin value can ensure more turnover. In this case, this would be a value of 4000-6000K. Research has shown that natural light is a mood-booster for consumers. A daylight-based light temperature, for instance, does a good job of highlighting products and product colours. LED strips can also be used to emphasise certain product areas.

Daily rhythm

For spaces where there is a desire to imitate the rhythm of the day, Lumiparts has the Tunable White LED strip Larid available. Dynamic light can vary from 2700 to 5000 Kelvin and can be made biodynamic. With the right supply, such as Dali DT8, you can make the light shine automatically with the rhythm of the day.

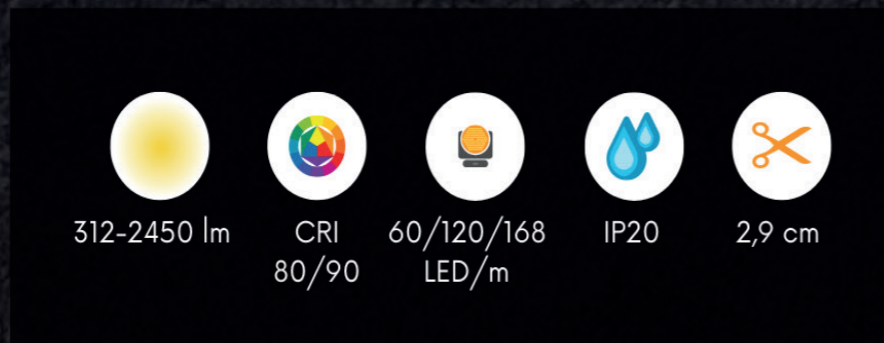
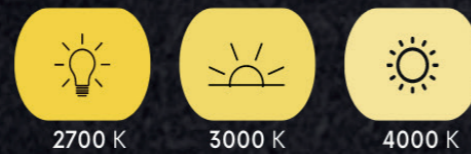
Concentration areas Utilities

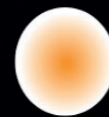
Cool tones ranging from 5000K to 6000K are preferable in rooms where concentration is required. These create an atmosphere that has a positive influence on concentration. Public areas and industrial buildings also make extensive use of these cool light temperatures to give a clinical impression. Examples include warehouses, schools, hospitals, municipalities and (dental) medical practices.



Extro

The Extro LED strip has the possibility to radiate in three different wattages. We have a 7.2W/m variant, a 14.4W/m variant and a 20.2W/m variant. The Lumiparts Extro LED strip can emit up to 2450 lumens per metre and is available with a CRI of 80 or 90.





Dim to Warm
max. 1000 lm/m



CRI 90



224 LEDs/m



IP20



6,3 cm



1800 K - 2700 K

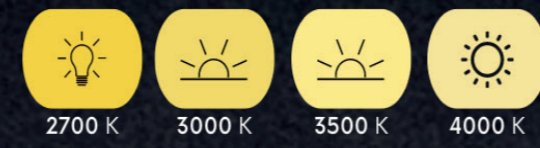
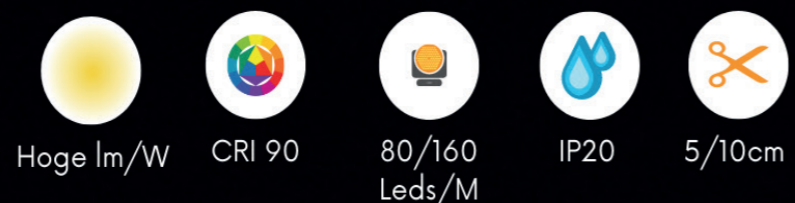


2200 K - 3000 K



Aves D2W

With the Lumiparts Aves LED strip you can easily create an atmospheric room, because this is our dim to warm LED strip. By dimming the strip, you get a warmer colour temperature, which creates more atmosphere. The Aves LED strip has a high colour rendering and high light quality. This makes this LED strip well suited for the hospitality industry and homes.



Elus

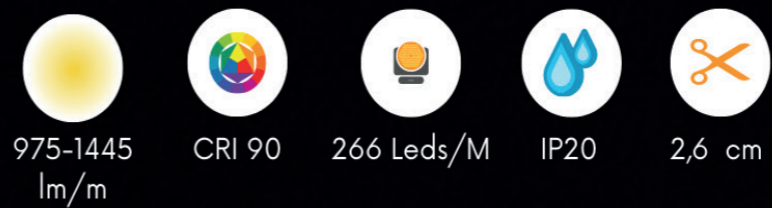
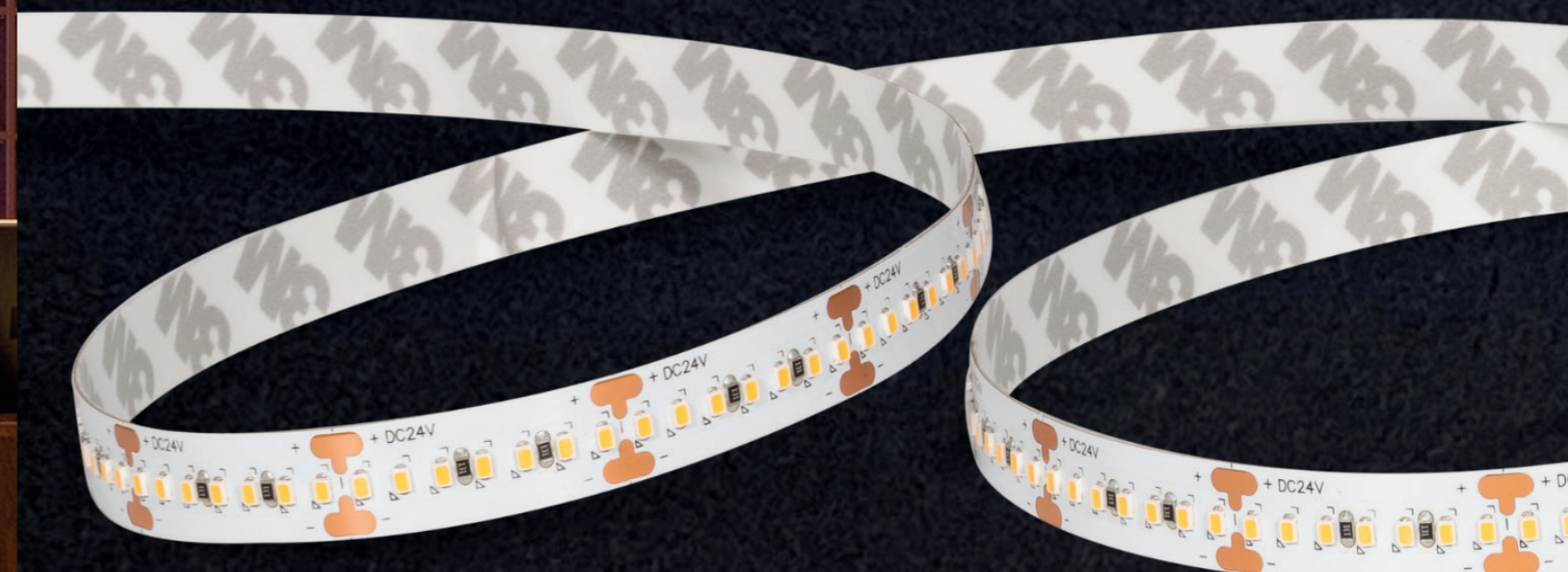
The Elus LED strip's diversity provides for infinite application possibilities. The Elus LED strip is available in 6 different wattages and has a high lumen/watt ratio, this LED strip can emit 140lm/W. The Elus is available with 80 or 160 LEDs per metre. The Elus has a CRI of 80 or 90 and is available in 4 different lighting colours.





Trivi

The Trivi is a design LED strip whereby the colours can vary from 1800 kelvin to 4000 kelvin. Trivi is available in 7 different light colours and can be shortened by 2.6 cm every time to minimise the risk of shadowing. The Trivi has a high CRI and has 266 LEDs per metre.



With attention to Details

There are a number of terms that are commonly used when providing information about Linear Led. At Lumiparts we think this information is important prior to any purchase. In the following paragraphs we will tell you more about our use of terms.

The light colour

As already mentioned, the light colour of the LED strip really determines the atmosphere. The light colour is indicated by the number of Kelvin. This varies from 1000 Kelvin to 10000 Kelvin. Lumiparts uses different terms that say something about the functionality of the LED strip such as tunable white and dim to warm. Tunable white stands for the imitation of dynamic light. This form of lighting can be used in areas where concentration is required. The term Dim to Warm (D2W) means that the lighting gets a warmer light colour as it is dimmed. This form of lighting is often used within residential buildings and hospitality.

Shade strip

When you purchase an LED strip, it is also important that you provide the dimensions of the piece you need. Our led strips can be made to measure, but all led strips have a shortening requirement. These also differ per ledstrip. If you have a LED strip that is shorter than the profile you are going to use, you will get a shadow strip.

The shadow border creates interruption in your light line, which of course you want to avoid. This is why we use the term: cuttable length, which indicates after how many centimetres a LED strip can be cut off.

LEDs per metre

The number of LEDs per metre ensures better light distribution. In principle, a regular LED strip has 60 LEDs per metre. In some LED strips, such as our Trivi, this can increase to 266 LEDs per metre.

The wattage

When choosing a LED strip, the wattage also comes into play. This provides insight into the power of the system and shows whether the choice of LED strip is suitable for the installation location and the chosen LED profile.

The maximum connection length

The maximum connection length stands for the length of the LED strip that can be soldered on. This is the side of a LED strip on which the power supply is entered.

CRI

(Coloring Rendering Index)

This is an index which indicates how well a light source can faithfully reproduce the colours of illuminated objects. A high value indicates better colour rendering.

The CRI of our LED strips is usually >90. In principle, therefore, you do not need to worry about this. Colour fidelity is optimal.



IP value

The IP value is very important when choosing your LED strip. In particular, the end goal of your project is leading here. The abbreviation IP stands for International Protection rating. The first figure indicates the degree of protection against solids and the second figure the protection against moisture and water.

IP ratings that are used are:

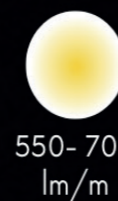
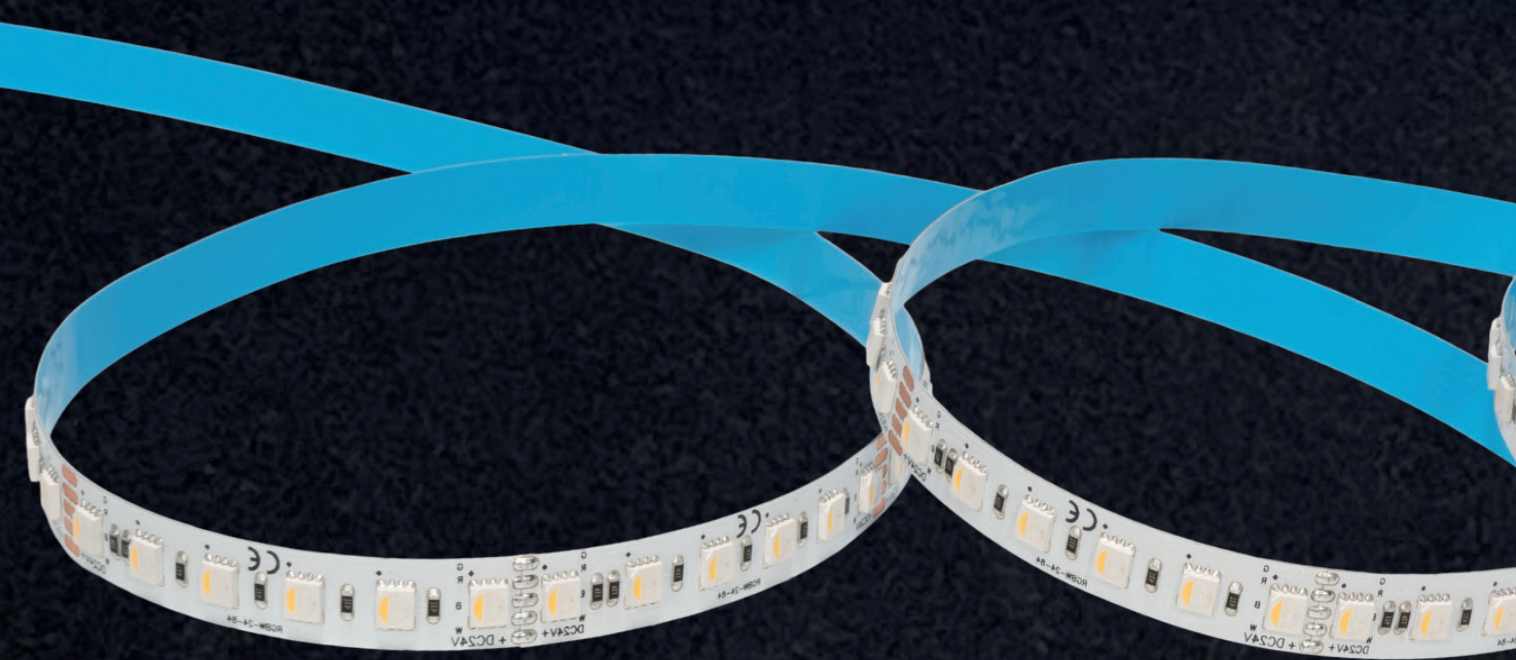
- IP20: Dustproof
- IP21: Watertight
- IP23: Rainwater-proof
- IP44: Splash water proof (suitable for around the bath and in sheltered places)
- IP54: Splash and dust proof
- IP65: Protected against water jets
- IP67: Dustproof and protected against immersion for 30 minutes (suitable for pond lighting or in the shower)
- IP68: Dust-proof and protected against staying under water (can be hit by all kinds of weather)



Rius RGBW

The Rius LED strip can be used for various projects. This LED strip appears in two different wattages. This Red Green Blue White (RGBW) LED strip can imitate the rainbow. By controlling the white light colour separator, a good white colour with a high CRI can be emitted in addition to the classic RGB colours.

Our Rius LED strip has 84 LEDs per metre and can be shortened by 7.15 cm. The Rius LED strip can be controlled at 4 or 5 metres.



550-700
lm/m



CRI 90



84 Leds/M



IP20



7,15cm



2700 K



3000 K



4000 K

Nevia RGB

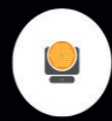
Our basic Nevia LED strip appears as an RGB LED strip. It features red, green and blue LEDs in one housing, giving the nevia a uniform appearance. The Nevia is available in two different wattages, namely 9W and 14.4W. The Nevia is supplied on a roll of 5 metres and has 60 LEDs per metre. The nevia is ideal for use in creating atmosphere indoors, especially in rooms where themed colours are central.



330-485
lm/m



RGB



60 Leds/M



IP20



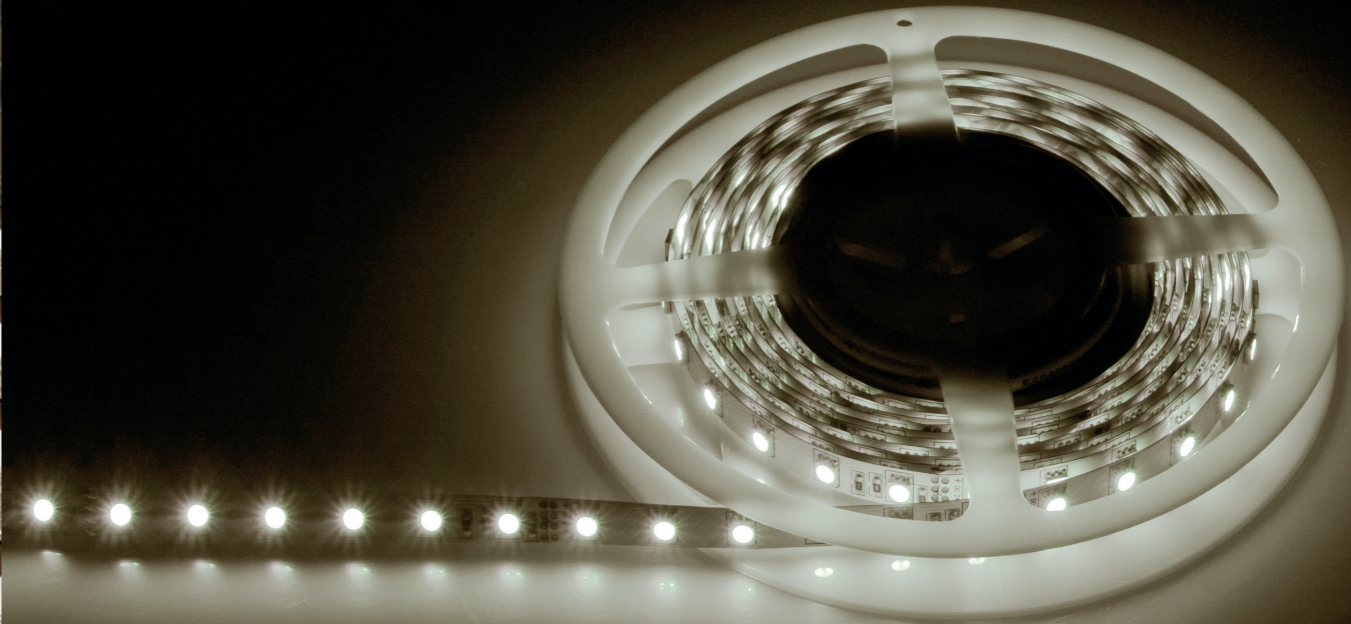
10cm





Lupareel

The Lupareel is our flexible and classic all-rounder, which can be used for all kinds of basic projects. This LED strip contains 1 chip per LED and comes in a 4.8W/m and a 9.6W/m variant. Lupareel is available with 60 or 120 LEDs per metre and, like all other LED strips in our range, is equipped with 3M mounting. The voltage of Lupareel is 24V and the light colours in which Lupareel is available are 2700, 3000 and 4000K.



190-460
lm/m



CRI 80



60/120
Leds/M



IP20



5/10cm

Drivers and Control systems

Primary Dimmable

A primary dimmable driver means that dimming is achieved by influencing the primary voltage. This way of dimming is controlled with a switch. The primary dimmable driver cannot be controlled remotely.



Casambi

By using a Casambi driver, you can create a mesh network and all the luminaires can communicate with each other. They also listen to the same user interface. The user interface can consist of a tablet or telephone with a Bluetooth function. Casambi is ideal for use in renovation projects or where the use of data cables is not possible.

CASAMBI

RF single color/RGB+TW Dimbaar met RF

The RF serves as a control system in addition to an on/off driver, so that you can still control the lighting remotely. The RF system includes a connection between the driver and the LED strip. With the remote control you can control the light pattern.



Dali

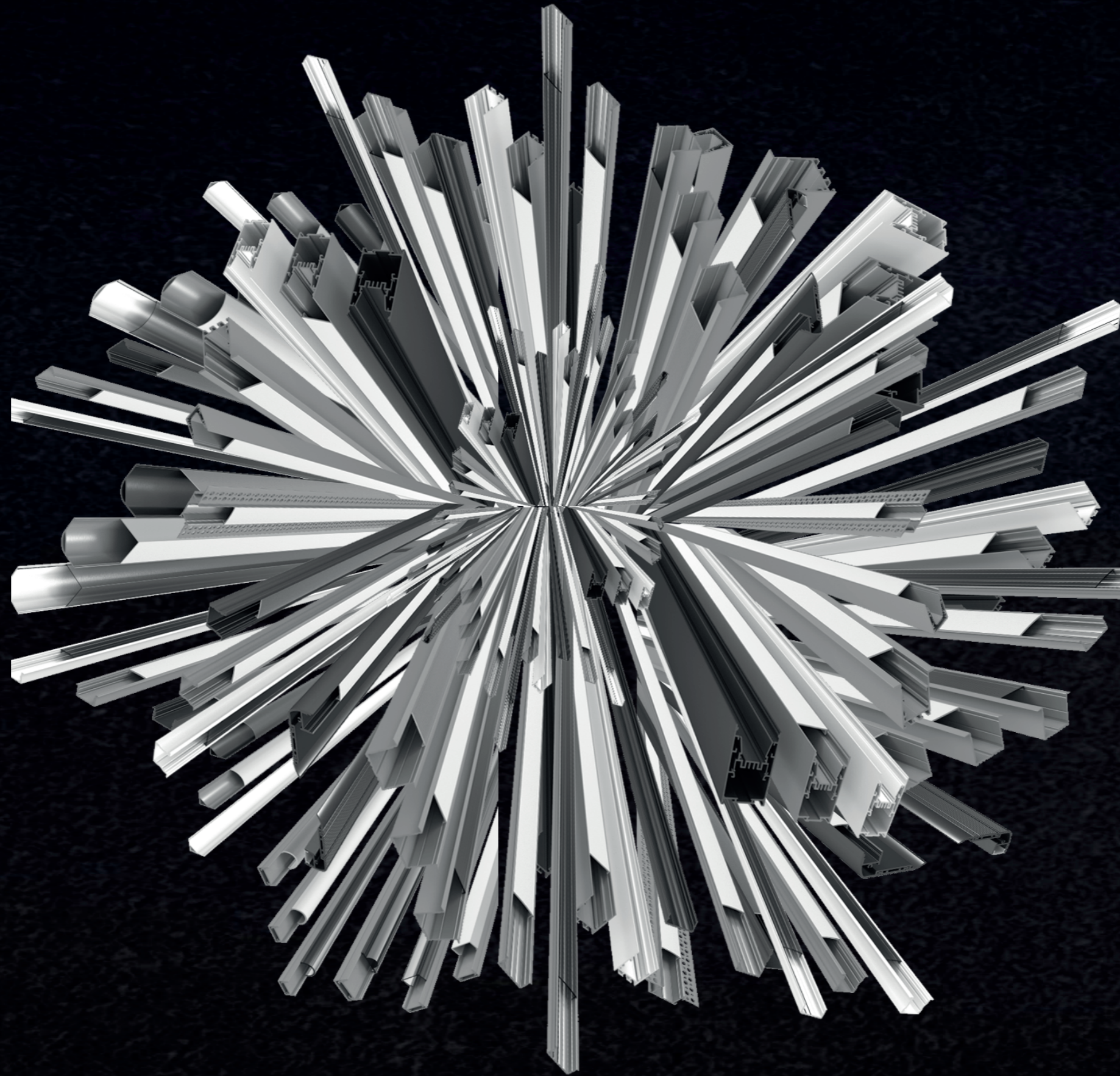
Ballasts with a DALI interface can be addressed and controlled individually. They can also be added to one or more DALI groups. In addition, they offer extended functionality. Dali systems are able to store information for various lighting scenes and transmit status or error messages.



On/off driver

The on/off driver is actually the authentic driver as we know it. It ensures that the light can be switched on and off on a normal switch. There are no additional specifications.



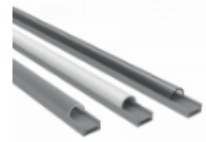


LED Profiles

LED strip profiles come in all shapes and sizes. They provide easier mounting in challenging places, a nice finish, better light distribution and the profile forms a protective layer for the LED strip. Our range includes recessed, surface-mounted and pendant profiles.

Surface mounted

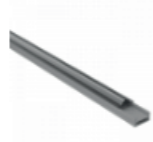
The surface-mounted profiles are used, for example, in wardrobes, kitchens, in drawers or on the ceiling. These profiles can be used anywhere and provide cooling and light distribution for the LED strip. The strip is attached to the back of the profile.



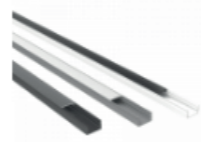
Alupro Click Round



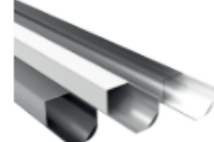
Alupro Click Square



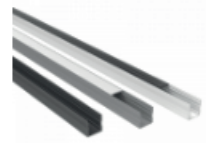
Alupro Click Lens



Alupro Curve 8mm Surface Mounted



Alupro Corner 30mm Square



Alupro Curve 15mm Surface Mounted



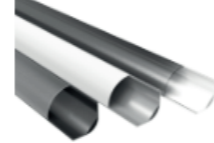
Alupro Original



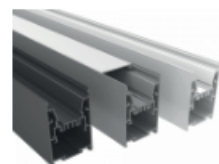
Alupro Plus Stairs R



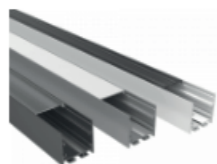
Alupro Plus XLC



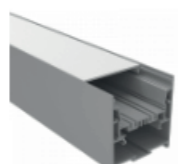
Alupro Corner 30mm Round



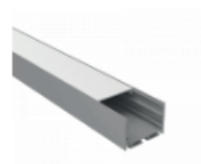
Alupro Plus XLH



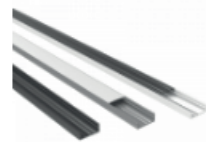
Alupro Plus XLS



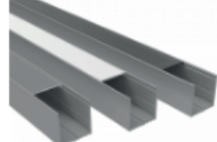
Alupro Plus XLM



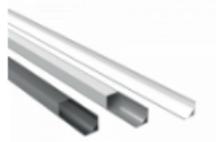
Alupro Plus XLW



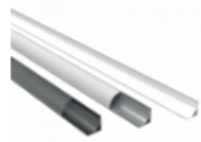
Alupro Wide Surface Mounted



Alupro XL Surface Mounted



Alupro Corner 16mm Square



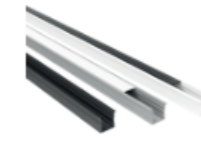
Alupro Corner 16mm Round

Recessed

With a recessed LED profile, the lighting is completely concealed in an object. This way, the profile of the light source is largely out of sight. For example, ceiling, staircase or wall lighting, as shown in the image.



Alupro Curve 8mm Recessed



Alupro Curve 15mm Recessed



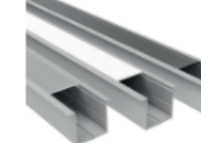
Alupro Plus Plaster S



Alupro Plus Plaster W



Alupro Plus XLR



Alupro XL Recessed



Alupro Wide Recessed

Pendant

Pendant profiles are used to hang up the LED strips. They can be used above concentration and modern rooms. The Alupro round is a ready-made pendant profile. Square profiles from the surface-mounted range can also be made into a pendant profile.



Alupro Round Pendant 40mm



Alupro Round Pendant 60mm



Alupro Round Pendant 100mm

Why our clients recommend us.

Any questions?

At Lumiparts we always look for ways to make a difference. We don't just say it, we show it. After all, light is about perception, and everyone has a slightly different experience. Each lighting issue therefore requires a unique approach.

Do you have questions about which form of linear LED best suits your project or product range, would you like to receive a demonstration of our demo box or would you like to know more about all the possibilities? We are ready to help you! A call to **+31 (0)172 574500** is sufficient. Do you prefer digital contact? Send an e-mail to info@lumiparts.nl!



Scan here and find out all data sheets
of our Linear LED assortment



OR

Scan here to contact us!



1. Commitment

We think along with you! Because every project is unique. We look at the project from everyone's perspective and offer a solution that suits you. Do you have special wishes for a luminaire, for example? Then we will realise this through our White Label concept. Our White Label concept makes it possible to make adjustments to our products or rebrand them with your own brand label. We always aim to offer you as much flexibility, service and advice as possible.

2. Reliability

Since 1985, we have been delivering what you expect and more. From light measurement documents to delivery: everything is transparent. At Lumiparts we believe it is important to meet agreements and provide factual information. For example, we measure all our luminaires in our own light lab. In this way we can provide you with reliable information and lighting advice.



3. Quality and craftsmanship

Everything starts with our products and their quality. The light lab of Lumiparts ensures that the specifications and functioning of each luminaire are checked by means of a light measurement. We measure the number of (lm/W) lumens per watt, the number of lux, the LAB FLICKER, the CRI (Color Rendering Index), the CCT (Correlated Color Temperature) and the LOR (Light output ratio). We determine the final light output of each luminaire and prepare an EPREL report containing all accurate information. We assemble all products in our own assembly department and check the operation of the products one last time before they are dispatched.



4. Service and guarantee

We like to make you feel good and we believe that every product should exceed your standards. This is how Lumiparts likes to see its customers shine before, during and after the project. After giving personal advice, our own team of enthusiastic assembly workers ensure that orders are assembled as desired and ready for installation. These installation-ready products save valuable time and effort. When the time comes, our account managers provide support during delivery. At Lumiparts we are sure of our quality and therefore offer a warranty of up to 5 years.



5. Flexibility and stock

We have a large stock! Our warehouse is located in Nieuwkoop and therefore always nearby. The components in our range are interchangeable, which makes it possible to apply them to different fittings. In this way, we offer fast, modular solutions. Our current customers rate us as a flexible lighting supplier and we are proud of that.



Linear LED



Mastering the needs of lighting

Lumi Parts B.V.
Nijverheidsweg 2
2421 LR Nieuwkoop
Nederland

+31 (0)172 574500
+31 (0)172 574592
info@lumiparts.nl
www.lumiparts.nl

Light our Socials!



Facebook



LinkedIn



Instagram